








Revision Strategy for Proximal Junctional Failure: Combined Effect of Proximal Extension and Focal Correction

Global Spine Journal
2024, Vol. 0(0) 1–9
© The Author(s) 2024
Article reuse guidelines:
sagepub.com/journals-permissions
DOI: 10.1177/21925682241254805
journals.sagepub.com/home/gsj



Renaud Lafage, MS¹ , Han-Jo Kim, MD² , Robert K. Eastlack, MD³, Alan H. Daniels, MD⁴, Bassel G. Diebo, MD⁴ , Greg Mundis Jr, MD⁵, Marc Khalifé, MD, PhD^{1,6} , Justin S. Smith, MD, PhD⁷ , Shay R. Bess, MD⁸, Christopher I. Shaffrey, MD⁹, Christopher P. Ames, MD¹⁰, Douglas C. Burton, MD¹¹, Munish C. Gupta, MD¹² , Eric O. Klineberg, MD¹³, Frank J. Schwab, MD¹, Virginie Lafage, PhD¹ , and ISSG¹⁴

Abstract

Study design: Retrospective review of a prospectively-collected multicenter database.

Objectives: The objective of this study was to determine optimal strategies in terms of focal angular correction and length of proximal extension during revision for PJF.

Methods: 134 patients requiring proximal extension for PJF were analyzed in this study. The correlation between amount of proximal junctional angle (PJA) reduction and recurrence of proximal junctional kyphosis (PJK) and/or PJF was investigated. Following stratification by the degree of PJK correction and the numbers of levels extended proximally, rates of radiographic PJK (PJA >28° & ΔPJA >22°), and recurrent surgery for PJF were reported.

Results: Before revision, mean PJA was 27.6° ± 14.6°. Mean number of levels extended was 6.0 ± 3.3. Average PJA reduction was 18.8° ± 18.9°. A correlation between the degree of PJA reduction and rate of recurrent PJK was observed ($r = -.222$). Recurrent radiographic PJK (0%) and clinical PJF (4.5%) were rare in patients undergoing extension ≥8 levels, regardless of angular correction. Patients with small reductions (<5°) and small extensions (<4 levels) experienced moderate rates of recurrent PJK (19.1%) and PJF (9.5%). Patients with large reductions (>30°) and extensions <8 levels had the highest rate of recurrent PJK (31.8%) and PJF (16.0%).

¹ Department of Orthopedic Surgery, Northwell Health, Lenox Hill Hospital, New York, NY, USA

² Department of Orthopedic Surgery, Hospital for Special Surgery, New York, NY, USA

³ Department of Orthopedic Surgery, Scripps Clinic Torrey Pines, La Jolla, CA, USA

⁴ Department of Orthopaedic Surgery, University Orthopedics, Providence, RI, USA

⁵ San Diego Spine Foundation, San Diego, CA, USA

⁶ Department of Orthopedic Surgery, Hôpital Européen Georges Pompidou, Paris, France

⁷ Department of Neurosurgery, University of Virginia Medical Center, Charlottesville, VA, USA

⁸ Department of Orthopaedic Surgery, Denver International Spine Center, Denver, CO, USA

⁹ Department of Neurosurgery, Duke University Medical Center, Durham, NC, USA

¹⁰ Department of Neurosurgery, University of California San Francisco Spine Center, San Francisco, CA, USA

¹¹ Department of Orthopaedic Surgery, University of Kansas Medical Center, Kansas City, KS, USA

¹² Department of Orthopaedic Surgery, Washington University School of Medicine, St. Louis, MO, USA

¹³ Department of Orthopaedic Surgery, University of California Davis Medical Center, Sacramento, CA, USA

¹⁴ International Spine Study Group, Denver, CO, USA

Corresponding Author:

Renaud Lafage, Department of Orthopedic Surgery, Northwell Health, 525 E 71st Street, Lenox Hill Hospital, New York, NY 10021-4898, USA.

Email: renaud.lafage@gmail.com



Creative Commons Non Commercial No Derivs CC BY-NC-ND: This article is distributed under the terms of the Creative Commons Attribution-NonCommercial-NoDerivs 4.0 License (<https://creativecommons.org/licenses/by-nc-nd/4.0/>) which permits non-commercial use, reproduction and distribution of the work as published without adaptation or alteration, without further permission provided the original work is attributed as specified on the SAGE and Open Access pages (<https://us.sagepub.com/en-us/nam/open-access-at-sage>).

Conclusion: While the degree of focal PJK correction must be determined by the treating surgeon based upon clinical goals, recurrent PJK may be minimized by limiting reduction to $<30^\circ$. If larger PJA correction is required, more extensive proximal fusion constructs may mitigate recurrent PJK/PJF rates.

Keywords

proximal junctional kyphosis, proximal junctional failure, proximal junctional angle, adult spinal deformity, complications, revision

Introduction

Surgery for adult spinal deformity (ASD) results in substantial clinical benefits for selected patients,¹⁻⁵ however is also associated with high complication rates.⁶⁻¹² While minor complications are thought to have a relatively limited impact on long-term clinical outcomes in most cases,¹³ major complications often result in adverse long-term clinical deficits.^{13,14} Proximal junctional kyphosis (PJK) and proximal junctional failure (PJF) are major complications associated with long-construct fusions for ASD.¹⁵⁻¹⁷ PJK is a radiological finding demonstrating accelerated angular deformity of the spine proximal to the upper instrumented vertebra (UIV),¹⁵⁻¹⁷ and may be subclinical in nature. Most used definition for PJK is a kyphotic angle of 10 degrees measure between the UIV and UIV+2 combined with a kyphotic change greater than 10 degrees.¹⁸

Proximal junctional failure (PJF), however, is a more severe variant and is more commonly associated with suboptimal clinical outcomes, including pain, instability and often neurologic injury and need for revision surgery.¹⁹ Furthermore, in those patients requiring cranial extension of their fusion for treatment of PJF, the risk of recurrent PJK and PJF remains unacceptably high, with an estimated incidence of 44.3%.²⁰

Patient-related, radiographic, and surgical risk factors for primary PJK and PJF development are well-described in the literature.^{15,21-27} However, evidence-based strategies for prevention of recurrent PJF in revision cases requiring proximal extension of fusion constructs are poorly reported to date. In this study, we evaluated a population of patients with PJF undergoing cranial extension of prior spinal fusions with the goal of defining successful surgical strategies in terms of angular correction and levels of proximal extension for the prevention of recurrent PJF.

Materials and Methods

Patient Population

Retrospective review of a prospectively-collected multicenter database of ASD patients was performed. This study was conducted according to strict institutional review board standards at each institution and abided by ethical guidelines for human subject research (Clinicaltrials.gov identifier:

Nct00738439). All included patients provided their informed consent to take part in the study.

All care was provided by specialists with expertise in treating ASD, and all participating centers obtained institutional review board approval for data collection. Inclusion criteria for database enrollment are age ≥ 18 years and at minimum one of the following: scoliosis $>20^\circ$, sagittal vertical axis >5 cm (SVA), pelvic tilt $>25^\circ$ (PT) and/or thoracic kyphosis $>60^\circ$ (TK). Exclusion criteria include spinal deformities associated with acute trauma or with autoimmune, neoplastic, neuromuscular, syndromic and/or infectious disorders. For this project, only patients undergoing revision surgery for diagnosis of PJF following posterior correction and stabilization were included. PJF included all types of failures: fracture, kyphosis, hardware loosening, spondylolisthesis... All selected cases were reviewed and validated by an orthopaedic spine surgeon specializing in ASD.

Data Collection

Baseline demographic data including age, gender, body mass index (BMI), American Society of Anesthesiologists (ASA) score, and history of prior spinal fusion were collected. Radiographic parameters collected included level of diagnosed PJK, Pelvic Incidence (PI), Pelvic tilt (PT), spino-pelvic mismatch (pelvic incidence minus lumbar lordosis, PI-LL), T10-T12 angle, T1-T12 angle, and T1 Pelvic Angle (TPA). Surgical factors including cranial extent of fusion (number of levels), PJK angular reduction, operative time, estimated blood loss (EBL), surgical approach, neurologic decompression, any osteotomy, 3-column osteotomy, and interbody fusion were collected. PJK angles including upper instrumented vertebra (UIV) to UIV+2, UIV-1 to UIV+1, and UIV-1 to UIV+2 were collected at all timepoints.

Clinical outcomes were collected including revision surgery for any reason, revision surgery for diagnosis of recurrent PJF, and recurrent PJK as defined radiographically according to angle severity (proximal junction (PJ) angle $\geq 28^\circ$ and a change in PJ angle $\geq 22^\circ$).²⁸

Statistical Analysis

For direct comparisons of continuous variables, either unpaired *t*-test or Man-Whitney U test (depending on appropriateness) were utilized. Appropriateness of testing was

determined using the Kolmogorov-Smirnov test for normal distribution. For categorical variables, Chi-squared or Fisher exact test were used. Paired *t*-test or Wilcoxon signed-rank test were utilized for comparison of variables between pre- and post-operative timepoints. Pearson correlation coefficient was utilized to evaluate correlation.

Results

Baseline Data

A total of 151 surgical cases meeting inclusion criteria were identified in the database. One-hundred-twenty-eight unique patients undergoing 134 unique surgical cases had complete surgical data, pre-revision images, and post-revision images and were included in the analysis. Specifically, this included 122 patients who only underwent 1 revision surgery during the follow-up period and 6 patients who underwent 2 surgeries during this time (Figure 1). The mean age among all patients was 66 (min 33-max 87). Female patients comprised 72.2% of the study cohort. The mean BMI was 28.9 (min 16.8-max 50.2). The mean ASA score was 2.7 (min 2 – max 4). The majority of patients (65.7%) requiring revision for PJK had an original upper instrumented vertebrae (UIV) in the lower thoracic spine (T8-T12). In contrast, 15.7% of patients had a UIV in the upper thoracic spine (T2-T7) and 17.9% of patients had a UIV in the lumbar spine (L1-L3). One patient with a UIV in the cervical region was excluded from the analysis. The large majority (90.3%) of patients had at least one pedicle screw at the UIV, with 8% having some cement at the UIV

level. Most (88.8%) of fusions extended caudally to the sacrum and/or pelvis.

While pre-revision alignment parameters demonstrated an overall reasonably well-aligned sagittal plane (PI-LL: $13.2^\circ \pm 21.1$, TK: $55.4^\circ \pm 22.1$, TPA: $26.2^\circ \pm 12.7$, SVA: $81 \text{ mm} \pm 74$), substantial variability between patients was noted (Table 1). Pre-operative PJK angles demonstrated an overall mean kyphosis of 35.1° across 3 segments (UIV-1 to UIV+2).

Comparison of Sagittal Alignment Parameters Prior to Revision Based upon PJK Location

When pre-revision alignment parameters were compared after stratification by UIV level, substantially more global sagittal malalignment was noted in those experiencing PJK at more caudal levels (Figure 2). Specifically, both T1 pelvic angle (TPA) [UT $15.2^\circ \pm 12.9^\circ$ vs LT $27.6^\circ \pm 12.0^\circ$ vs Lumbar $31.1^\circ \pm 9.4^\circ$, $P < .001$] and Sagittal vertical axis (SVA) [UT $7.7 \text{ mm} \pm 53.2 \text{ mm}$ vs LT $86.5 \text{ mm} \pm 67.7 \text{ mm}$ vs Lumbar $129.9 \text{ mm} \pm 63.5 \text{ mm}$, $P < .001$] were worse in those with lower UIVs and PJK. Likewise, a significant association between lower PJK levels and worse spino-pelvic mismatch (PI-LL) was noted [UT $0.6^\circ \pm 18.9^\circ$ vs LT $10.3^\circ \pm 18.7^\circ$ vs Lumbar $34.8^\circ \pm 16.3^\circ$, $P < .001$]. Mean thoracic kyphosis (TK) was larger in those with higher PJK levels [UT $75.8^\circ \pm 17.6^\circ$ vs LT $56.5^\circ \pm 19.0^\circ$ vs Lumbar $32.8^\circ \pm 16.3^\circ$, $P < .001$]. More cranial PJK regions were also associated with higher magnitude of 3-segment (UIV-1 to UIV+2) PJK magnitude [UT $42.4^\circ \pm 15.3^\circ$ vs LT $37.4^\circ \pm 13.7^\circ$ vs Lumbar $20.3^\circ \pm 14.4^\circ$, $P < .001$] (Table 2).

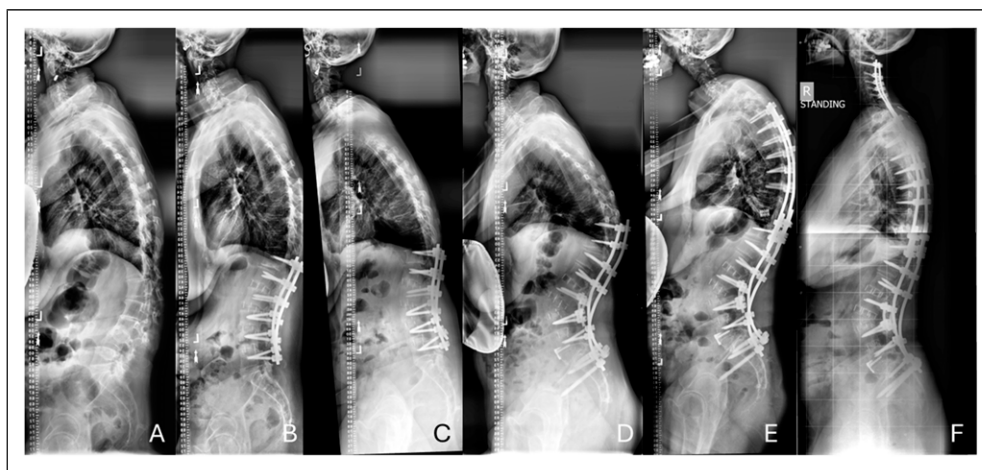


Figure 1. 56-year-old female underwent initial treatment to correct severe coronal and sagittal lumbar deformity with staged anterior-posterior surgery in 12/2010 (A to B). Patient was reoperated in 11/2011 due to progressive sagittal deterioration combined with coronal decompensation (C). Patient underwent posterior instrumentation from T10 to pelvis with pedicle subtraction osteotomy at L3 (D). Patient rapidly presented signs of proximal failure, requiring reoperation in 12/2012 (E). PJF treatment included proximal extension to T3 with reduction of focal kyphosis from 51° to 19° with T10 vertebral column resection (VCR). Patient required second extension for progressive cervico-thoracic focal kyphosis (38°), anterior cervical malalignment (C2-T3 SVA: 14 cm) and neck pain in 11/2013 with posterior instrumentation up to C2 (F).

Table I. Description of Sagittal Alignment for the Entire Cohort.

		Mean	StD	25th	50th	75th	K-S
Spino-pelvic parameters	PI	54.3	12.9	44.7	51.5	63.2	.004
	PT	26.8	10.7	20.3	26.6	33.1	.200
	PI-LL	13.2	21.1	-2.5	12.0	27.1	.200
	T10-L2	-27.5	19.2	-41.9	-26.3	-13.8	.200
	T1-T12	-55.4	22.1	-71.2	-54.8	-40.3	.200
	TPA	26.2	12.7	18.0	26.9	34.2	.200
	SVA	81.4	73.9	25.9	81.2	132.6	.200
PJK angles	UIV to UIV+2	-27.6	14.6	-36.1	-26.7	-16.8	.200
	UIV-1 to UIV+1	-31.1	14.6	-41.6	-31.2	-21.0	.200
	UIV-1 to UIV+2	-35.1	15.7	-45.2	-34.3	-24.2	.200

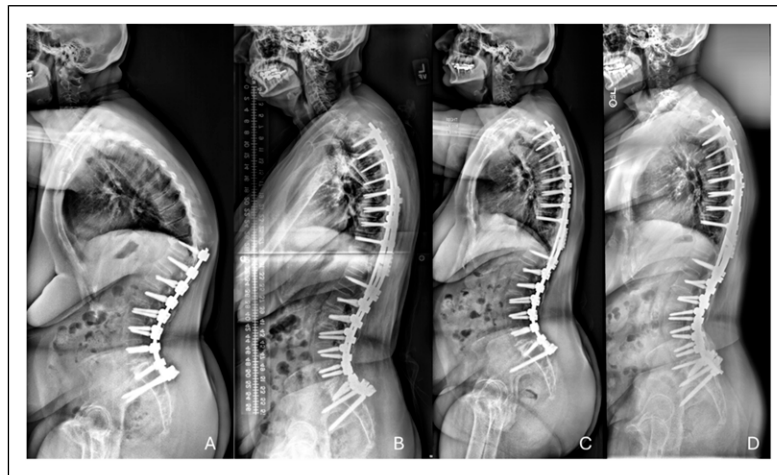


Figure 2. 66-year-old female presents with severe back pain for the past 15 years. History of spine fusion from T11 to pelvis presenting with severe proximal kyphosis (60 deg) (A). Patient treated in 9/2017 with posterior proximal extension from T11 to T3 and Smith-Petersen osteotomy to reduce focal kyphosis to 20 deg (B). Patient underwent revision surgery for painful right iliac screw in 11/2018 (C) and pseudoarthrosis and rod breakage at L5-S1 in 08/2020 (D). New proximal angle went from 7° of lordosis before PJK surgery (A) between T1 and T3 to 24°- kyphotic 4 years post-operative (D).

Surgical Metrics

Among the entire cohort, the mean surgical time was 353 minutes (± 170 minutes) with a mean estimated blood loss (EBL) of 1442 mL (± 1325 mL). Almost all (98.5%) of patients were treated with a posterior fusion. Decompression was required in 52.7% of patients. An osteotomy was required in 76.9% of patients, with 35.4% of patients requiring a 3-column osteotomy (3CO). Interbody fusions were performed in 35.4% of patients. Those with revision surgery performed for PJK at more caudal levels generally underwent more extensive operations in terms of operative time, average EBL, and need for decompression, interbody fusion, or osteotomies (Table 3).

Postoperative Alignment Parameters

Among all patients, there was a statistically significant improvement in PT (27 to 22°, $P < .0001$), PI-LL (13.2 to 1.2°,

$P < .0001$), TPA (26.2 to 17.5°, $P < .001$), and SVA (81.4 to 29.2mm, $P < .0001$). A significant post-operative change in thoracolumbar (T10-L2) kyphosis (-27.5 to -12.7°, $P < .0001$), thoracic kyphosis (55 to 61°, $P < .0001$) was also noted. After stratification by level of PJF corrected, only patients in the lower thoracic and lumbar groups were noted to have significant changes in all alignment parameters after revision surgery. Patients being corrected for upper thoracic PJF were found to have a significantly reduced thoracic kyphosis (76 to 67°, $P = .014$) postoperatively, however all other alignment parameters remained similar (Table 4).

Correction Strategies: Proximal Extension and Focal Deformity Reduction

The mean number of levels extended proximally was 6.0 ± 3.3 (23.3% ≤ 3 levels; 16.5% ≥ 9 levels). No significant difference in number of levels extended was noted between PJK level cohorts (UT 4.7 levels vs LT 6.2 levels vs LL 6.3 levels,

Table 2. Comparison of the Sagittal Alignment Before Revision Between PJK Location.

		Upper Th.		Lower Th.		Lumbar		P
		Mean	StD	Mean	StD	Mean	StD	
Spino-pelvic parameters	PI	53.2	15.1	54.9	12.7	53.1	11.6	.780
	PT	22.2	11.5	27.6	10.6	27.7	9.4	.096
	PI-LL	0.6	18.9	10.3	18.7	34.8	16.3	.000
	T10-L2	-9.2	15.0	-31.9	17.5	-27.4	19.6	.000
	T1-T12	-75.8	17.6	-56.5	19.0	-32.8	16.3	.000
	TPA	15.2	12.9	27.6	12.0	31.2	9.4	.000
	SVA	7.7	53.2	86.5	67.7	129.9	63.5	.000
PJK angles	UIV to UIV+2	-30.2	14.5	-28.7	14.9	-21.4	12.2	.061
	UIV-1 to UIV+1	-40.3	15.5	-32.9	12.0	-16.4	12.4	.000
	UIV-1 to UIV+2	-42.4	15.3	-37.4	13.7	-20.3	14.4	.000

Table 3. Comparison Surgical Data Between PJK Location.

	Upper Th.	Lower Th.	Lumbar	P
Op Time [25th 50th 75th]	212 270 433	225 299 412	328 436 520	.001 ^a
EBL [25th 50th 75th]	300 600 1250	500 1000 1900	1000 1650 2425	.005 ^a
Posterior Fusion? [N(%)]	21 (100%)	85 (97.7%)	24 (100%)	1.000 ^b
Decompression? [N(%)]	5 (23.81%)	46 (53.49%)	18 (75%)	.00 ^c
Osteotomy? [N(%)]	16 (76.19%)	61 (71.76%)	23 (95.83%)	.032 ^b
3CO? [N(%)]	5 (23.81%)	25 (28.41%)	13 (54.17%)	.051 ^b
Interbody Fusion? [N(%)]	4 (19.05%)	26 (30.23%)	16 (69.57%)	.00 ^c

^aKruskal Wallis.^bFisher Exact.^cChi Square.**Table 4.** Comparison of the Sagittal Alignment After Revision Between PJK Location, P-values Indicate Comparison Between Pre-operative Alignment Variables and Post-operative Alignment Variables.

	All Patients		Upper Th.		Lower Th.		Lumbar	
	Mean +/- StD	P-value	Mean +/- StD	P-value	Mean +/- StD	P-value	Mean +/- StD	P-value
PT	22 +/- 9.8	.000	20.3 +/- 11.7	.176	23.1 +/- 9.5	.000	19.3 +/- 8.8	.000
PI-LL	1.2 +/- 13.1	.000	-.1 +/- 15.4	.732	1.5 +/- 13.1	.000	1.5 +/- 10.8	.000
T10-L2	-12.7 +/- 13.8	.000	-8.8 +/- 13.1	.759	-15.6 +/- 12.8	.000	-5.4 +/- 15.2	.000
T1-T12	-61.3 +/- 16.4	.000	-67.4 +/- 18.5	.014	-62.5 +/- 15.2	.000	-51.3 +/- 15	.000
TPA	17.5 +/- 9.4	.000	13.3 +/- 11.1	.232	18.7 +/- 9	.000	16.8 +/- 8.6	.000
SVA	29.2 +/- 58.5	.000	-1.1 +/- 54.8	.410	33.3 +/- 61	.000	40.4 +/- 44.1	.000

$P = .173$). Average PJA reduction (UIV-1 to UIV+2) was $18.8^\circ \pm 18.9$ [$<5^\circ$ (small) for 24.8% of patients, 5 to 30° (moderate) for 49.6% of patients, and $>30^\circ$ (large) for 25.6% of patients]. Larger focal angular corrections were generally required for those with lower PJK levels (all $P < .005$).

Relationship Between Focal Deformity Correction, Proximal Extension, and Recurrent PJF Rates

No significant association between amount of focal angular reduction and new PJK angle was noted (all $P > .05$). While

the degree of PJA reduction was correlated with the recurrent radiographic PJK ($r = -.222$), there was no statistically significant difference between amount of angular reduction and recurrent PJF (as measured by need for another revision). Small ($<5^\circ$) and large ($>30^\circ$) angular reductions were both associated with increased radiographic recurrent PJK rates (small 18.2% vs moderate 9.1% vs large 29.4%, $P < .037$). While no significant differences between amount of proximal extension and either PJK (small [<4 levels] 16.1% vs moderate [4-7 levels] 10.0% vs large [≥ 8 levels] 4.5%, $P = .478$) or PJF (small [<4 levels] 6.5% vs moderate [4-7 levels] 11.3% vs

large [≥ 8 levels] .0%, $P = .291$) was noted, there was a trend toward lower rates of both in those undergoing longer extension of their fusions.

When evaluating both focal angular reduction and amount of proximal extension (Table 5), the lowest rate of recurrent PJF (.0%) and PJK (4.5%) was found in those with a proximal extension of ≥ 8 levels, regardless of reduction amount (Table 5). In contrast the highest rates of recurrent PJF (13.6%) and radiographic PJK (31.8%) were seen in those undergoing a large reduction ($>30^\circ$) without a large proximal extension (<8 levels). Small reductions (<5 degrees), when associated with small extensions (<4 levels), also demonstrated high rates of both recurrent PJF (9.52%) and PJK (19.05%).

Discussion

Despite widespread awareness among spine surgeons as well as numerous technical advancements in the field, PJK and PJF continue to result in substantial morbidity for ASD patients. Patient-related, surgical, and biomechanical risk factors for PJK and PJF have been studied extensively, as have a number of strategies for prevention.^{17,23,25,29-39} Nevertheless, the optimal revision strategy for patients who have already experienced PJF, in order to prevent recurrent failure, remains unknown. Patients who have already experienced proximal junctional failure are at an inherently higher risk of experiencing the same phenomenon again following revision surgery, with recurrence rates estimated at 44%.²⁰ This at-risk population requires special consideration in order to prevent a cascading pattern of multiple surgeries resulting in more and more proximal fusion levels and associated increases in morbidity and mortality. This study sought to determine the optimal biomechanical revision strategy for such patients in terms of both focal angular correction and levels of proximal extension. Because there is an inherent biomechanical relationship between focal deformity correction and the length of the lever arm created by proximal extension of the fusion, it is logical that these factors should be considered in tandem. This study determined that those with large focal reductions and minimal extension proximally were at the highest risk of recurrent failure. Yang et al, in an evaluation of 763 operative ASD patients, similarly concluded that overcorrection was associated with significantly increased risk or PJF.²⁷ Some

authors, with the hopes of minimizing the risk of PJK and PJF, have advocated for concepts including intentionally less aggressive correction targets and age-adjusted alignment goals.^{40,41} Nevertheless, it appears that under-correction, even when using age-adjusted alignment targets, is common, with one recent paper citing under-correction rates of 30.3% for SVA, 41.0% for PT, and 43.6% for PI-LL when measured with postoperative full-body radiographs.⁴² Such under-corrections are noted to necessitate substantial compensatory mechanisms, including increased posterior pelvic shift, knee flexion, thoracic hypokyphosis, and cervicothoracic compensation.^{40,41} Our finding that small angular reductions were also associated with increased radiographic PJK rates suggests that under-correction of focal malalignment with small proximal extension of fusion is not a viable strategy for prevention of recurrent PJK. Large focal reductions are often required in these cases in order to restore global sagittal alignment and achieve the primary goals of surgery. Rather, in patients who require a large angular reduction for correction of existing PJK, this data suggests that surgeons might consider more extensive fusions proximally, as this may mitigate the risk of recurrence. Daniels et al, comparing patients undergoing fusions from the pelvis to either lower or upper thoracic upper instrumented vertebrae (UIVs), found that upper thoracic UIVs were associated with both greater sagittal vertical axis (SVA) improvement and lower PJK rates.⁴³ Additionally, the authors noted that greater coronal Cobb angle, greater thoracic Cobb angle, and performance of a 3-column osteotomy were all associated with surgeon decision to fuse to the upper thoracic spine. This indicates that the bias of most surgeons treating ASD is already to increase the levels of proximal fusion in cases where large angular corrections are required. The current study complements the prior literature by introducing objective criteria for a reasonable amount of proximal extension needed based upon the focal correction required. Surgeons should consider more cephalad UIV choices when performing large angular corrections (Figure 3).

A number of important study limitations merit discussion. First, this study was a retrospective review of a prospectively-collected database. No randomization was performed, and the decision regarding angular correction and extent of proximal extension was ultimately determined according to the best judgement of the treating surgeon. For example, in the large

Table 5. Rate of PJF (Failure) and PJK (Radiographic) by Proximal Extension and Amount of Correction.

	Small Extension (<4 Levels)		Moderate Extension (4-7 Levels)		Large Extension (≥ 8 Levels)	
Small Reduction ($<5^\circ$)	N = 21	Failure: 2 (9.52%) x-ray: 4 (19.05%)	N = 10	Failure: 1 (10%) x-ray: 0 (0%)	N = 2	Failure: 0 (0%) x-ray: 0 (0%)
Moderate reduction (5-30°)	N = 4	Failure: 0 (0%) x-ray: 0 (0%)	N = 50	Failure: 5 (10%) x-ray: 2 (4%)	N = 8	Failure: 0 (0%) x-ray: 0 (0%)
Large reduction ($>30^\circ$)	N = 2	Failure: 0 (0%) x-ray: 1 (50%)	N = 20	Failure: 3 (15%) x-ray: 6 (30%)	N = 12	Failure: 0 (0%) x-ray: 1 (8.33%)

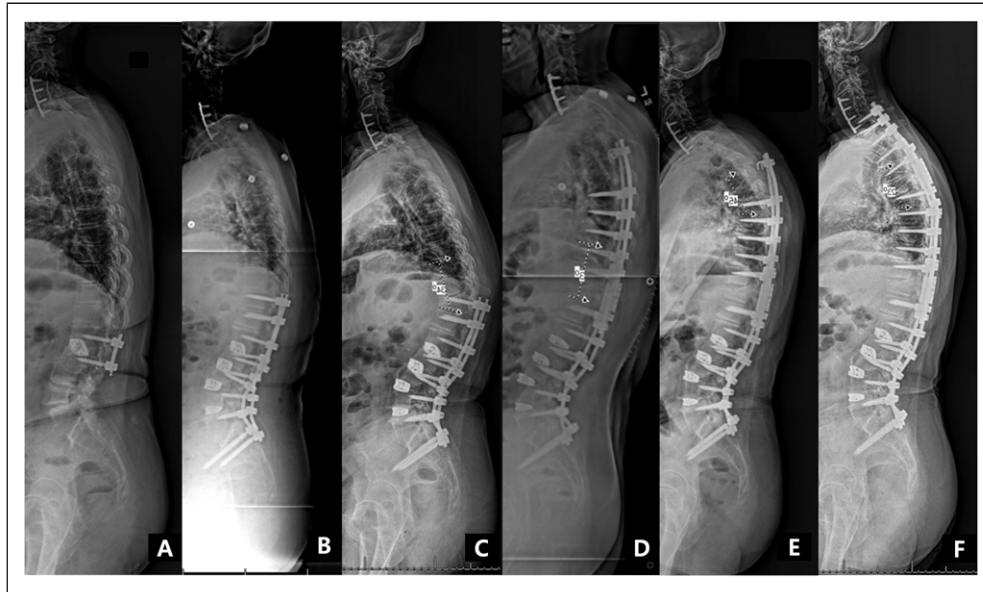


Figure 3. Standing sagittal films of 68-year-old female with low back pain and neurogenic claudication attributable to adult spinal deformity (A). Following initial treatment with 2-stage T10-Pelvis fusion construct, the patient re-presented with increasing low back pain and decompensated sagittal balance (PJA 34°) (B). The patient underwent a large (31°) PJK correction and moderate (6 level) proximal extension of fusion (D). Unfortunately, she experienced recurrent PJK with new PJA of 45° (E). She then underwent a moderate (22°) angular correction and moderate (5 level) proximal extension to C6, with maintenance of correction at 6-month follow-up examination (F).

majority of cases resulting in small angular corrections, the surgeon elected to perform small proximal extensions of fusion. Disassociating this interaction was impossible in this study. Secondly, this study was only able to adequately analyze surgical strategy for revision of PJK in terms of angular correction and proximal extension. A number of other factors likely important for the prevention of recurrent PJK were not included in this limited analysis. Suboptimal alignment of fusion caudal to the PJK, for example, may predispose patients to recurrent junctional issues. Given the low number of cases in which distal alignment was changed in our series, such variables are unable to be studied with adequate power. Additionally, given the rolling prospective nature of data collection in this database, there is significant variability in final follow-up time between patients, which introduces the potential for bias. Important parameters that most likely significantly impact decision strategy and maintenance of the results were also missing due to the retrospective nature of this analysis, with bone health (BMD) and posterior muscle quality being the two main ones. Finally, it should be noted that while the majority of patients in this study presented with PJK at the low thoracic level, patients with PJK at the high thoracic and lumbar levels were also included. This was necessary in order to increase the power and generalizability of the study, however also introduces substantial variability. The biomechanical forces acting on the upper thoracic, lower thoracic, and lumbar spine are inherently different, and the optimal numbers in terms of angular correction and proximal extent of fusion may be different depending upon which part

of the spine is being treated. Despite this fact, the core concept introduced by this study, that larger angular corrections require more proximal extensions of fusion in order to optimize stability, is likely universal. Further studies with increased power for sub-stratification between regions are necessary to establish more accurate surgical goals.

Conclusion

Our understanding of the radiographic and biomechanical predictors of proximal junctional failure following surgery for adult spinal deformity has grown exponentially in recent years. Nonetheless, surgical strategies for focal correction and proximal fusion levels continue to vary widely, especially amongst those undergoing revision surgery. In order to provide optimal surgical care for this high-risk patient population, a higher level of reproducibility and predictability must be achieved. This study establishes principals for focal correction goals and proximal fusion levels. Specifically, for large PJK angle corrections, surgeons should consider large proximal extensions. Such guidelines may help with surgical planning and reduce preventable complications in this high-risk patient population.

Declaration of Conflicting Interests

The author(s) declared no potential conflicts of interest with respect to the research, authorship, and/or publication of this article.

Funding

The author(s) disclosed receipt of the following financial support for the research, authorship, and/or publication of this article: This study was funded by the International Spine Study Group Foundation (ISSGF). The International Spine Study Group (ISSG) is funded through research grants from DePuy Synthes (current), Nuvasive (current), K2M (current), Innovaxis (past), Biomet (past), and individual donations. Funding sources did not play a role in investigation.

IRB Approval

This study was approved by institutional review board in each of the participating centers ([Clinicaltrials.gov](https://clinicaltrials.gov) identifier: Nct00738439). All included patients provided their informed consent to take part in the study.

ORCID iDs

Renaud Lafage  <https://orcid.org/0000-0002-4820-1835>
 Han-Jo Kim  <https://orcid.org/0000-0002-7482-6994>
 Bassel Diebo  <https://orcid.org/0000-0002-7835-2263>
 Marc Khalife  <https://orcid.org/0000-0001-9022-3336>
 Justin Smith  <https://orcid.org/0000-0003-0467-5534>
 Munish Gupta  <https://orcid.org/0000-0002-4711-4377>
 Virginie Lafage  <https://orcid.org/0000-0002-0119-7111>

References

- Moal B, Schwab F, Ames CP, et al. Radiographic outcomes of adult spinal deformity correction: a critical analysis of variability and failures across deformity patterns. *Spine Deform*. 2014;2: 219-225
- Bae J, Theologis AA, Strom R, et al. Comparative analysis of 3 surgical strategies for adult spinal deformity with mild to moderate sagittal imbalance. *J Neurosurg Spine*. 2018;28:40-49
- Riley MS, Bridwell KH, Lenke LG, et al. Health-related quality of life outcomes in complex adult spinal deformity surgery. *J Neurosurg Spine*. 2018;28:194-200
- Reid DBC, Daniels AH, Ailon T, et al. Frailty and health-related quality of life improvement following adult spinal deformity surgery. *World Neurosurg*. 2018;112:e548-e554. doi:10.1016/j.wneu.2018.01.079. Epub ahead of print January 19, 2018
- Smith JS, Lafage V, Shaffrey CI, et al. Outcomes of operative and nonoperative treatment for adult spinal deformity: a prospective, multicenter, propensity-matched cohort assessment with minimum 2-year follow-up. *Neurosurgery*. 2016;78:851-861
- Soroceanu A, Diebo BG, Burton D, et al. Radiographical and implant-related complications in adult spinal deformity surgery: incidence, patient risk factors, and impact on health-related quality of life. *Spine*. 2015;40:1414-1421
- Soroceanu A, Burton DC, Oren JH, et al. Medical complications after adult spinal deformity surgery: incidence, risk factors, and clinical impact. *Spine*. 2016;41:1718-1723
- Smith JS, Shaffrey CI, Glassman SD, et al. Risk-benefit assessment of surgery for adult scoliosis: an analysis based on patient age. *Spine*. 2011;36:817-824
- Smith JS, Klineberg E, Lafage V, et al. Prospective multicenter assessment of perioperative and minimum 2-year postoperative complication rates associated with adult spinal deformity surgery. *J Neurosurg Spine*. 2016;25:1-14
- Kim HJ, Iyer S, Zebala LP, et al. Perioperative neurologic complications in adult spinal deformity surgery. *Spine*. 2016;1
- Fehlings MG, Kato S, Lenke LG, et al. Incidence and risk factors of postoperative neurologic decline after complex adult spinal deformity surgery: results of the Scolio-RISK-1 study. *Spine J*. 2018;18:1733-1740. doi:10.1016/j.spinee.2018.02.001. Epub ahead of print February 13, 2018
- Bhagat S, Vozar V, Lutchman L, Crawford RJ, Rai AS. Morbidity and mortality in adult spinal deformity surgery: norwich Spinal Unit experience. *Eur Spine J*. 2013;22(Suppl 1):S42
- Glassman SD, Hamill CL, Bridwell KH, et al. The impact of perioperative complications on clinical outcome in adult deformity surgery. *Spine*. 2007;32:2764-2770
- Scheer JK, Mundis GM, Klineberg E, et al. Recovery following adult spinal deformity surgery: the effect of complications and reoperation in 149 patients with 2-year follow-up. *Eur Spine J*. 2016;25:2612-2621
- Kim HJ, Lenke LG, Shaffrey CI, et al. Proximal junctional kyphosis as a distinct form of adjacent segment pathology after spinal deformity surgery: a systematic review. *Spine*. 2012;37: S144-S164
- Cho SK, Shin JI, Kim YJ. Proximal junctional kyphosis following adult spinal deformity surgery. *Eur Spine J*. 2014;23: 2726-2736
- Hyun S-J, Lee BH, Park J-H, et al. Proximal junctional kyphosis and proximal junctional failure following adult spinal deformity surgery. *Korean J Spine*. 2017;14:126-132
- Glattes RC, Bridwell KH, Lenke LG, et al. Proximal junctional kyphosis in adult spinal deformity following long instrumented posterior spinal fusion: incidence, outcomes, and risk factor analysis. *Spine*. 2005;30:1643-1649
- Rastegar F, Contag A, Daniels A, et al. Proximal junctional kyphosis: inter- and intraobserver reliability of radiographic measurements in adult spinal deformity. *Spine*. 2018;43:E40
- Kim HJ, Wang SJ, Lafage R, et al. Recurrent proximal junctional kyphosis: incidence, risk factors, revision rates, and outcomes at 2-year minimum follow-up. *Spine*. 2020;45:E18-E24
- Hyun S-J, Kim YJ, Rhim S-C. Patients with proximal junctional kyphosis after stopping at thoracolumbar junction have lower muscularity, fatty degeneration at the thoracolumbar area. *Spine J*. 2016;16:1095-1101
- Denis F, Sun EC, Winter RB. Incidence and risk factors for proximal and distal junctional kyphosis following surgical treatment for Scheuermann kyphosis: minimum five-year follow-up. *Spine*. 2009;34:E729-E734
- Han S, Hyun S-J, Kim K-J, et al. Comparative study between cobalt chrome and titanium alloy rods for multilevel spinal fusion: proximal junctional kyphosis more frequently occurred in patients having cobalt chrome rods. *World Neurosurg*. 2017;103:404
- Yagi M, Akilah KB, Boachie-Adjei O. Incidence, risk factors and classification of proximal junctional kyphosis: surgical

- outcomes review of adult idiopathic scoliosis. *Spine*. 2011;36: E60-E68
25. Cammarata M, Aubin C-É, Wang X, et al. Biomechanical risk factors for proximal junctional kyphosis: a detailed numerical analysis of surgical instrumentation variables. *Spine*. 2014;39: E500-E507
 26. Zou L, Liu J, Lu H. Characteristics and risk factors for proximal junctional kyphosis in adult spinal deformity after correction surgery: a systematic review and meta-analysis. *Neurosurg Rev*. 2019;42:671-682
 27. Yang J, Khalifé M, Lafage R, et al. What factors predict the risk of proximal junctional failure in the long term, demographic, surgical, or radiographic? Results from a time-dependent ROC curve. *Spine*. 2019;44:777-784
 28. Lovecchio F, Lafage R, Line B, et al. Optimizing the definition of proximal junctional kyphosis: a sensitivity analysis. *Spine*. 2023;48:414-420
 29. Snyder LA, Martinez-del-Campo E, Neal MT, et al. Lumbar spinal fixation with cortical bone trajectory pedicle screws in 79 patients with degenerative disease: perioperative outcomes and complications. *World Neurosurg*. 2016;88:205-213
 30. Hassanzadeh H, Gupta S, Jain A, El Dafrawy MH, Skolasky RL, Kebaish KM. Type of anchor at the proximal fusion level has a significant effect on the incidence of proximal junctional kyphosis and outcome in adults after long posterior spinal fusion. *Spine Deform*. 2013;1:299-305
 31. Theologis AA, Burch S. Prevention of acute proximal junctional fractures after long thoracolumbar posterior fusions for adult spinal deformity using 2-level cement augmentation at the upper instrumented vertebra and the vertebra 1 level proximal to the upper instrumented vertebra. *Spine*. 2015;40:1516-1526
 32. Hart RA, Prendergast MA, Roberts WG, et al. Proximal junctional acute collapse cranial to multi-level lumbar fusion: a cost analysis of prophylactic vertebral augmentation. *Spine J*. 2008; 8:875-881
 33. Kebaish KM, Martin CT, O'Brien JR, et al. Use of vertebroplasty to prevent proximal junctional fractures in adult deformity surgery: a biomechanical cadaveric study. *Spine J*. 2013;13:1897-1903
 34. Pham MH, Tuchman A, Smith L, et al. Semitendinosus graft for interspinous ligament reinforcement in adult spinal deformity. *Orthopedics*. 2017;40:e206-e210
 35. Safaee MM, Osorio JA, Verma K, et al. Proximal junctional kyphosis prevention strategies: a video technique guide. *Oper Neurosurg*. 2017;13:581-585
 36. Safaee MM, Deviren V, Dalle OC, et al. Ligament augmentation for prevention of proximal junctional kyphosis and proximal junctional failure in adult spinal deformity. *J Neurosurg Spine*. 2018;28:1-8
 37. Yang J, Khalifé M, Lafage R, et al. What factors predict the risk of proximal junctional failure in the long term, demographic, surgical, or radiographic? Results from a time-dependent ROC curve. *Spine*. 2019;44:777-784
 38. Kim JS, Phan K, Cheung ZB, et al. Surgical, radiographic, and patient-related risk factors for proximal junctional kyphosis: a meta-analysis. *Global Spine J*. 2019;9:32-40.[
 39. Sebaaly A, Sylvestre C, El Quehtani Y, et al. Incidence and risk factors for proximal junctional kyphosis: results of a multicentric study of adult scoliosis. *Clin Spine Surg*. 2018;31: E178-E183
 40. Lafage R, Schwab F, Challier V, et al. Defining spino-pelvic alignment thresholds should operative goals in adult spinal deformity surgery account for age? *Spine*. 2016;41:62-68
 41. Lafage R, Schwab F, Glassman S, et al. Age-adjusted alignment goals have the potential to reduce PJK. *Spine*. 2017;42:1275-1282
 42. Passias PG, Jalai CM, Diebo BG, et al. Full-body radiographic analysis of postoperative deviations from age-adjusted alignment goals in adult spinal deformity correction and related compensatory recruitment. *Int J Spine Surg*. 2019;13:205-214
 43. Daniels AH, Reid DBC, Durand WM, et al. Upper-thoracic versus lower-thoracic upper instrumented vertebra in adult spinal deformity patients undergoing fusion to the pelvis: surgical decision-making and patient outcomes. *J Neurosurg Spine*. 2020;32:600-606