

Mobile cognition: imaging the human brain in the ‘real world’

Matthias Stangl ¹✉, Sabrina L. Maoz ² & Nanthia Suthana ^{1,2,3,4}✉

Abstract

Cognitive neuroscience studies in humans have enabled decades of impactful discoveries but have primarily been limited to recording the brain activity of immobile participants in a laboratory setting. In recent years, advances in neuroimaging technologies have enabled recordings of human brain activity to be obtained during freely moving behaviours in the real world. Here, we propose that these mobile neuroimaging methods can provide unique insights into the neural mechanisms of human cognition and contribute to the development of novel treatments for neurological and psychiatric disorders. We further discuss the challenges associated with studying naturalistic human behaviours in complex real-world settings as well as strategies for overcoming them. We conclude that mobile neuroimaging methods have the potential to bring about a new era of cognitive neuroscience in which neural mechanisms can be studied with increased ecological validity and with the ability to address questions about natural behaviour and cognitive processes in humans engaged in dynamic real-world experiences.

Sections

Introduction

Neuroimaging methods in humans

Potential of mobile human neuroimaging

Challenges of mobile human neuroimaging

Conclusions

¹Department of Psychiatry and Biobehavioral Sciences, Jane and Terry Semel Institute for Neuroscience and Human Behaviour, University of California, Los Angeles, Los Angeles, CA, USA. ²Department of Bioengineering, University of California, Los Angeles, Los Angeles, CA, USA. ³Department of Neurosurgery, David Geffen School of Medicine, University of California, Los Angeles, Los Angeles, CA, USA. ⁴Department of Psychology, University of California, Los Angeles, Los Angeles, CA, USA. ✉e-mail: stangl@ucla.edu; nanthia@ucla.edu

Introduction

One of the main goals of cognitive neuroscience is to understand how the brain supports natural human behaviour and cognition and, ultimately, to be able to detect and treat malfunctions in the underlying neural systems. Research over several decades has provided invaluable insight into the neural mechanisms that support human behaviour and cognition, using intelligently designed experimental tasks that are completed while brain activity is measured using a variety of neuroimaging techniques¹. Studies of human cognition in the real world (without brain recordings) have been able to investigate naturalistic human behaviours using tools such as wearable sensors (enabling, for example, eye-tracking or measurements of heart rate or electrodermal activity), smartphone apps, location tracking, ecological assessments, photo or video capture, and other ecologically valid methods for behavioural data collection in the 'wild'^{2–6}. However, because traditional human neuroimaging methods require bulky equipment and participants to remain motionless during recordings, these studies lacked the ability to simultaneously record high-quality signals from the brain. Human neuroimaging studies have thus taken place predominantly in tightly controlled laboratory settings using experimental tasks and stimuli that are not necessarily reflective of dynamic and complex real-world scenarios⁷. At the same time, neuroimaging studies across species provide evidence that spontaneous, natural behaviour and the degree of naturalism of stimuli have a strong impact on neural activity throughout the brain^{8–18}. Consequently, it remains unclear to what extent our current knowledge about the neural substrate (that is, the activity patterns of single neurons or neuron populations) supporting human cognition and behaviour generalizes from laboratory studies to real-world experience. Moreover, large gaps in knowledge remain with regard to questions that cannot be adequately addressed with brain recordings during immobility, including the neural basis of motor functions and movement-related disorders, spatial navigation and memory in the real world, spontaneous emotional affect and expression, or social interaction.

To address these important questions, it is imperative for cognitive neuroscientists to perform neuroimaging studies in humans while they move naturally and behave in the real world. In turn, this requires the development of methods to record brain activity in such situations and an adaptation of contemporary experimental designs and analysis methods to account for the full complexity of real-world environments and rich human behaviour. Recent years have brought a series of technological advances in mobile human neuroimaging, enabling brain recordings in freely moving humans and opening up a window into largely unexplored areas of cognitive neuroscience. In this Perspective, we highlight these new technologies, the novel findings they have recently enabled and their potential to provide insight into human cognition with unprecedented ecological validity. We discuss the limitations and challenges associated with mobile human neuroimaging methods and with the complexity of conducting experiments in real-world environments. We argue that overcoming these challenges and using the synergy between research and development in this new area of mobile cognition will transform human cognitive neuroscience in the years to come.

Neuroimaging methods in humans

Traditional neuroimaging methods

Neuroimaging technologies – such as functional magnetic resonance imaging (fMRI), functional near-infrared spectroscopy (fNIRS), scalp electroencephalography (EEG), magnetoencephalography (MEG) and

intracranial electroencephalography (iEEG) – have provided invaluable insight into the neural underpinnings of human cognition¹. Before the recent technological developments that enabled mobile versions of some of these technologies to be created, human neuroimaging studies were limited in their ability to record brain activity during natural movement and behaviour. Instead, studies typically recorded brain activity while participants viewed experimental stimuli presented on a screen in front of them, allowing participants to remain immobile. Furthermore, some of these methods (such as scalp EEG and fNIRS) are restricted to recording from superficial brain regions, making it difficult to analyse activity in subcortical regions such as the basal ganglia or medial temporal lobe (MTL), which are known to play central roles in a broad range of cognitive and behavioural functions.

Some traditional neuroimaging studies have indirectly studied the neural correlates of physical movement by measuring brain activity during imagined movement or the observation of movement by another person^{19,20}. Findings from imagined-movement studies have been particularly useful to build brain–machine interfaces (BMIs)²¹ using neural recordings in patients with paralysis^{22,23}. Despite theoretical models proposing that motor imagery and observation of movement engage brain mechanisms that are comparable to those involved in actual movement^{24–27}, only studies that facilitate direct comparisons with physical movements can establish the degree of this convergence.

Other studies have used virtual reality (VR; computer-generated models of the real world) to overcome some of the limitations of traditional neuroimaging. VR has proved useful for studies that require immobility as it can simulate mobile real-world experiences while the user is stationary and also allows the researcher control over stimuli presentation and environmental complexity²⁸. These studies have primarily used view-based VR, in which environments or avatars (virtual agents) are shown on a two-dimensional screen and tasks can be performed using devices such as a keyboard or joystick²⁹. Other studies have used VR headsets, in which a wearable head-mounted display directly translates real-world movements, such as head rotations or physical walking behaviour, to movements in the VR environment, and thus provides a more immersive experience²⁹. Studies using such VR headsets have allowed for physical movement, for example, on an omnidirectional treadmill, to simulate the navigation of real-world environments³⁰. Critically, however, these more immersive VR tasks are typically separated from neuroimaging sessions, in which participants are required to remain motionless. Consequently, it is unclear to what extent data from VR studies are reflective of real-life experience, in which brain activity is not only influenced by visual information but also by idiothetic self-motion cues (body-based sensory information arising, for example, from proprioceptive, vestibular and motor systems), rich environmental features, and other behavioural or cognitive demands that may not be adequately captured in VR^{12,13} (Fig. 1).

Mobile neuroimaging methods

Technological advances have enabled the development of miniaturized and wearable scalp EEG equipment that allows mobile recordings of electrophysiological brain activity³¹. Recent studies have demonstrated that advanced analysis techniques can remove a reasonable amount of the motion artefacts to which scalp EEG signals are highly susceptible^{32–36}, making mobile scalp EEG a promising method to study human brain activity during naturalistic movement and behaviour (Fig. 2a). Moreover, while studies using scalp EEG have traditionally focused on the contributions of superficial cortical regions, recent studies have applied new source-localization methods for high-density scalp EEG

Perspective

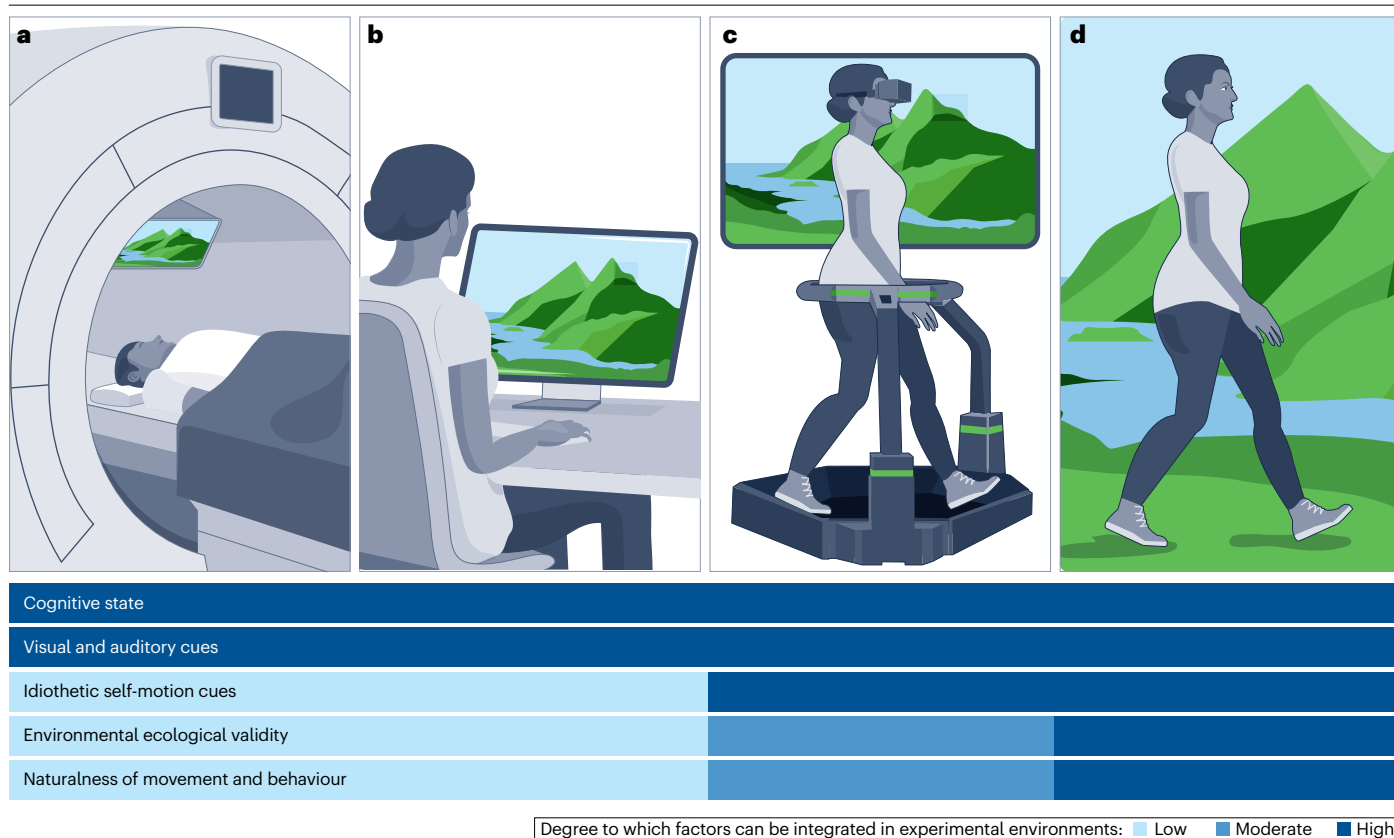


Fig. 1 | Experimental environments and factors impacting human cognition and behaviour. Examples of experimental environments used in cognitive neuroscience studies, including a motionless person in a functional magnetic resonance imaging (fMRI) scanner, performing a view-based virtual reality (VR) task shown on a screen (part **a**); a person sitting in an experimental room, performing a view-based VR task shown on a screen (part **b**); a person walking on an omnidirectional treadmill, wearing an immersive head-mounted display that allows physical movement within a VR environment (part **c**); and a freely moving person in a real-world environment (part **d**). Examples of factors that can impact human cognition and behaviour are shown at the bottom, including cognitive state (ongoing cognitive processes that depend, for example, on task demands, attention, motivation or memory); visual and auditory cues; idiothetic self-motion information (including proprioceptive, vestibular and motor cues); environmental ecological validity (the degree to which an environment reflects

real-world settings and allows immersion in the scenario); and naturalness of movement and behaviour (the degree to which it can reflect natural behaviour in the real world). The degree to which each factor can be integrated and manipulated in each of the experimental environments is indicated. Visual and auditory cues as well as the cognitive state of participants can be experimentally manipulated in all example environments. However, idiothetic self-motion information cannot be involved in the scenarios shown in parts **a** and **b** and environmental ecological validity and the naturalness of movement and behaviour are typically low in these environments. In the environment shown in part **c**, idiothetic self-motion cues can be perceived, whereas environmental ecological validity and the naturalness of movement and behaviour are typically moderate. An experiment in a real-world setting (part **d**) can involve all factors, including idiothetic self-motion cues, high environmental ecological validity, and natural movement and behaviour.

recordings to analyse signals from deeper brain regions such as the thalamus and retrosplenial cortex^{37–40}.

The development of mobile fNIRS systems, combined with advanced motion artefact correction methods, have opened up new opportunities to study the haemodynamic involvement of cortical regions during real-world experiences^{41–47}. Recent technological developments have further brought about a new generation of mobile MEG technology, based on moveable optically pumped magnetometers (OPM-MEG)^{48,49}. Although wearable OPM-MEG systems are still dependent on ‘magnetic shielding’ (experimental indoor environments specifically designed to remove background magnetic fields), they are nevertheless another emerging method to non-invasively record brain activity from cortical and subcortical regions in moving participants (Fig. 2b).

Over the past decade, ‘closed-loop’ deep brain stimulation (DBS) devices have emerged, which continuously monitor iEEG activity through permanently implanted electrodes that can remain within the brain indefinitely and deliver electrical stimulation upon detection of abnormal activity patterns⁵⁰. These systems have been implanted in thousands of individuals, primarily to treat epilepsy⁵¹ or Parkinson disease⁵² and, more recently, a wider range of neuropsychiatric disorders (including major depressive disorder (MDD))^{53,54}, post-traumatic stress disorder (PTSD)⁵⁵, obsessive compulsive disorder (OCD)⁵⁶ and binge eating disorder⁵⁷. As these devices are not externally visible and do not pose any obvious restrictions upon movement, individuals with such chronic implants can enjoy everyday activities. Thus, they provide a unique opportunity to obtain motion artefact-free electrophysiological recordings from deep brain regions (such as the hippocampus,

Perspective

entorhinal cortex, amygdala and nucleus accumbens) in humans during natural movement and behaviour^{58,59} (Fig. 2c). Another advantage of these devices is that iEEG recordings can be obtained over long time

periods (months or years), making data collection for longitudinal studies considerably easier than it is in traditional studies, in which data is obtained during short-term recordings (over minutes or hours)

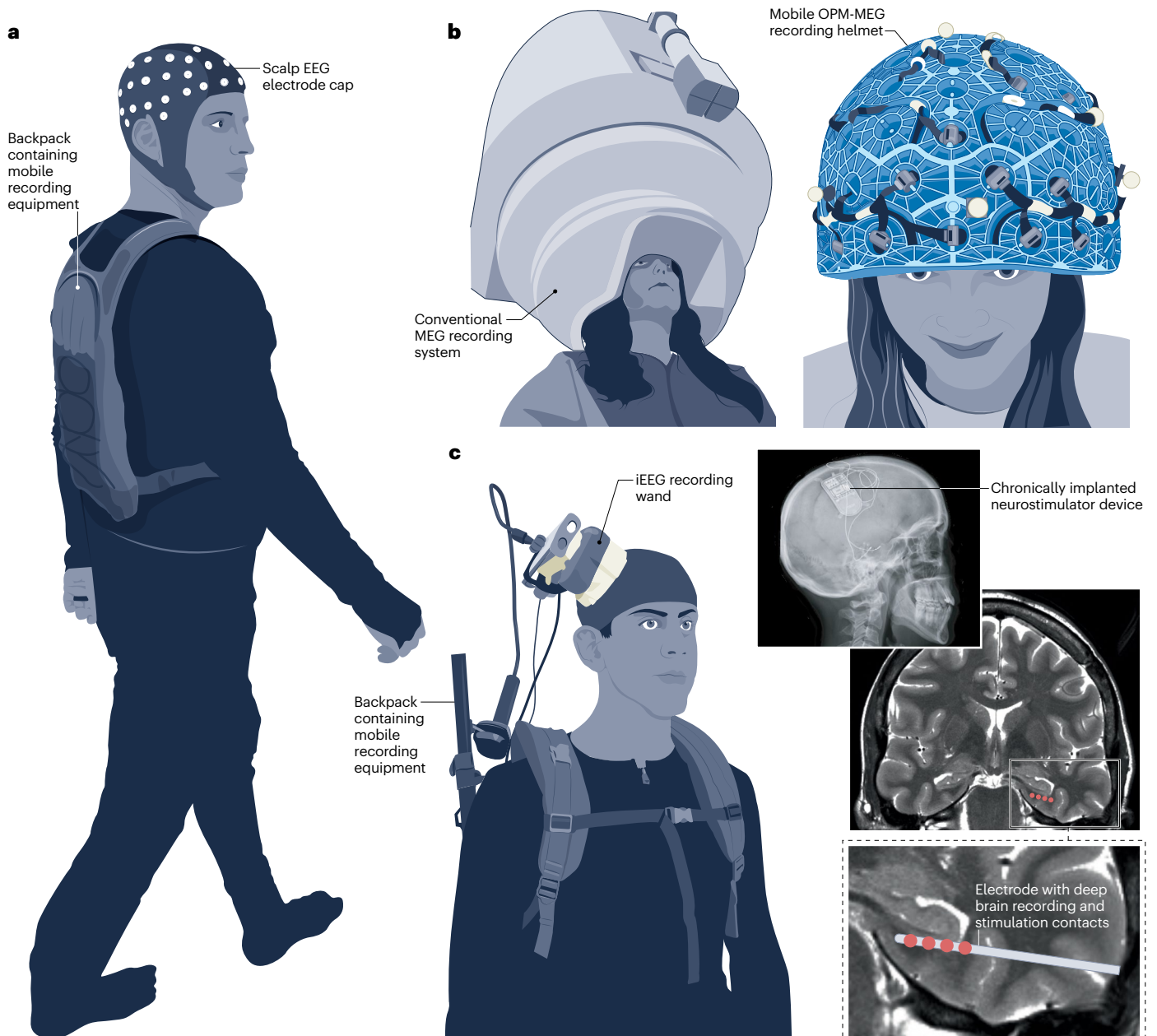


Fig. 2 | Recent advances in mobile neuroimaging methods. **a**, Scalp electroencephalography (EEG) can record activation from superficial brain areas during natural movement and behaviour. Recent methodological advances enable the removal of movement-related signal artefacts and source-localization of scalp EEG signals in deep brain regions^{32–40}. Schematic based on image provided by J. Whisman. **b**, Magnetoencephalography (MEG) traditionally requires participants to remain motionless within a restrictive scanner (left). However, recent technological advances allow recordings of moving participants via a mobile MEG system based on optically pumped magnetometers (OPM) that can be worn like a helmet (right)^{48,49}. Schematics based on images in refs. 48,49. **c**, Technical and methodological developments, such as the mobile deep brain recording and

stimulation (Mo-DBRS) platform⁵⁸, enable recordings of brain activity in deep brain regions in freely moving humans via chronically implanted closed-loop deep brain stimulation devices. As part of the Mo-DBRS platform, a malleable metal arm holds a backpack, in place above the implanted device and is connected to a metal-framed backpack, allowing a real-time readout of intracranial EEG (iEEG) activity. A post-operative X-ray image (top right) shows an example of a closed-loop deep brain stimulation system implanted for the treatment of epilepsy. Magnetic resonance images (bottom right) show the locations of the recording contacts (red dots) and a schematic illustration of an electrode implanted in the medial temporal lobe. Schematic based on image in ref. 71. X-ray and MRI images in part c are adapted from ref. 71, Springer Nature Ltd.

in laboratory settings. Moreover, the stimulation capabilities of chronically implanted neural devices offer another window into human cognition: stimulation, triggered under specific conditions defined by the experimenter, allows the investigation of causal relationships between activation in specific brain areas and changes in behaviour and cognition.

Although researchers have just begun to explore the opportunities that these new methods introduce, both non-invasive and invasive mobile recordings have already led to insightful discoveries in several sub-disciplines of cognitive neuroscience and promise, in future, to provide an unparalleled window into the neural mechanisms of naturalistic human cognition and behaviour in the real world.

Potential of mobile human neuroimaging

The ability to conduct neuroimaging studies with freely moving human participants in real-world environments has the potential to provide key insights into the neural mechanisms of human cognition, both from a basic-science perspective (that is, with the general goal of understanding brain function and behaviour) and from a clinical perspective (with respect to investigating malfunctions in neural systems and neurological or psychiatric disorders). Four areas of neuroscientific interest in particular serve as illustrative examples of the value of mobile neuroimaging methods: spatial navigation and memory, social cognition and interaction, movement and motor-related functions, and emotional affect and expression.

Spatial navigation and memory

Fundamental human abilities, such as navigating an environment without getting lost or forming memories of a personal experience, require the continuous processing and encoding of spatial information about the location of an individual, movements and the surrounding environment^{60–62}. As deficits in navigational and memory functions are a hallmark symptom of memory-related disorders such as Alzheimer disease (AD)^{63,64}, understanding how the human brain processes and encodes spatial information is also of critical importance for the development of therapies. Although spatial navigation and memory depend on a distributed network of brain regions, key components of this network are thought to be located in MTL regions such as the hippocampus and entorhinal cortex^{65,66}. However, recording MTL activity in moving humans has not been possible until recently. Consequently, many questions remain as to whether and to what extent our current knowledge – derived from brain recordings in stationary participants – is reflective of physical navigation and memory processes in the real world.

A large body of research in rodents has demonstrated that navigation through the environment is accompanied by ongoing oscillatory MTL activity in the theta frequency band (~6–8 Hz). By contrast, VR navigation studies in stationary individuals with implanted electrodes indicated that, in the human MTL, these theta oscillations occur at lower frequencies (~1–4 Hz)⁶⁷. Recently, mobile intracranial recordings in humans were able to shed light on this discrepancy: it was found that theta oscillations at higher frequencies do exist in the human MTL when individuals physically navigate through their environment^{16,68} and that the previously observed lower theta frequency activity may have resulted from the lack of physical movement in VR studies¹⁶. Moreover, mobile iEEG studies have demonstrated that movement-related theta oscillations in humans occur in bouts (which contrasts with findings in rodents but is consistent with findings in non-human primates and bats^{14,69,70}) and are more prevalent during fast walking than during slow

walking or stationary periods^{16,68,71}, revealing inter-species differences in the neural encoding of self-motion speed and the function of theta oscillations more generally. Another mobile human iEEG study demonstrated that the power of the theta oscillations is modulated by the location of an individual relative to environmental boundaries (such as the walls of a room)⁷¹ (Fig. 3a,b). Interestingly, theta power also reflected the location of another individual in the environment, suggesting that the human MTL uses common mechanisms to encode the location of oneself and of others. It was further found that boundary-related theta power increases were only present when the momentary location was behaviourally relevant (for example, when it contributed to success in a spatial memory task), suggesting that MTL representations of space can switch depending on cognitive demands. Together, these mobile iEEG studies demonstrated the impact of physical movement and the presence of others on neural activity during navigation and provided novel insights into human brain mechanisms that would not have been possible without mobile neuroimaging techniques.

Mobile scalp EEG and fNIRS studies have also enabled novel insights into the neural mechanisms underlying spatial navigation and orientation during active movement^{39–41,72–75}. These studies found, for example, associations of cortical low-frequency oscillations with the speed and direction of physical movement^{39,74,75} and suggested that oscillatory activity reflects multisensory information processing during physical navigation, evoked by a combination of visual, kinaesthetic, vestibular and proprioceptive motion cues^{72,73}. Furthermore, the studies showed that decision-making periods during active navigation (for example, route planning) were accompanied by bursts of frontal–midline low-frequency oscillations⁷² and that interaction with the environment (touching walls, for example) affected spatial learning and the underlying oscillatory signatures in source-localized deep brain regions (such as the retrosplenial complex)⁴⁰. Studies have also used mobile scalp EEG to investigate how memories are formed during active movement in the real world. This revealed neural signatures of successful real-world item-context binding (that is, learning the location of an object in the environment) and demonstrated that the specifics of an environment (indoor versus outdoor, or the presence of prominent landmarks nearby) have a substantial impact on the successful formation of memories during real-world experiences^{76–78}, providing another set of findings that were made possible only through mobile brain recordings conducted in natural environments.

While these studies showcase the potential of brain recordings in natural real-world scenarios, they reflect only the first steps towards understanding how the world – including the movement of oneself or that of other individuals, objects and environmental features – is represented in the human brain. Future mobile human neuroimaging studies are well positioned to account for the full complexity and richness of natural environments and human behaviour to address questions that cannot be answered by studies with immobile participants such as how signals from different sensory systems are integrated and combined to form a coherent neural representation of space or a memory of an individual experience. They may also provide insight into how information from different systems is weighted in real-life situations in which some sources are imprecise and noisy (for example, vision in darkness). Recording brain activity in freely moving humans also enables the study of the individual contributions of different sensory cues to spatial representations. For example, studies could compare the impact of different sensory input modalities on theta oscillations during natural physical movement and the effect of conditions in which sensory information is limited (such as moving in a wheelchair or in

Perspective

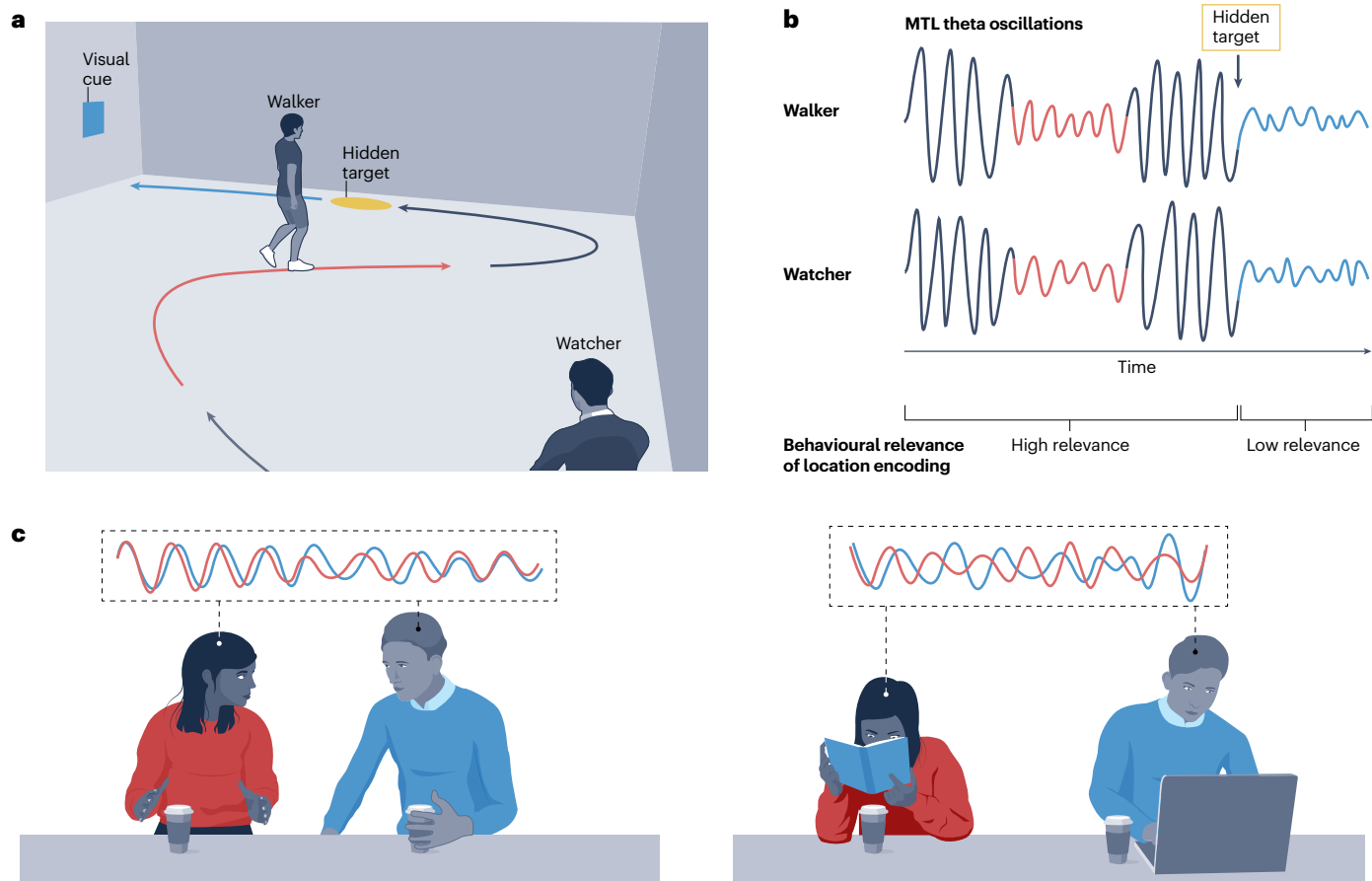


Fig. 3 | Studying spatial navigation and social interaction with mobile neuroimaging. **a**, Schematic illustration of a mobile intracranial electroencephalography (iEEG) study⁷¹ in which participants searched for and learned hidden target locations (yellow circle) or walked to visual cues (blue rectangle). Black and red arrows signify examples of walking trajectories that pass close to environmental boundaries (walls) and inner room areas, respectively. Participants alternated between walking (walker) and observing (watcher). **b**, Summary of the results from the study⁷¹ illustrated in part **a**, showing that the medial temporal lobe (MTL) theta power of the walker increased

when the walker was near a wall. Similarly, the watcher showed higher MTL theta power when the walker was near a wall. These effects only occurred when encoding of location, either of the watcher or of the walker, was required (that is, to keep track of the location of oneself or the walker before reaching a hidden target). **c**, An example of a potential future mobile iEEG study to investigate interbrain synchrony between two people at a cafe. The schematic traces above each image show hypothesized correlated brain activity between two individuals that increases during social (left) compared to non-social behaviour (right). Parts **a** and **b** are adapted from ref. 175, Springer Nature Ltd.

darkness, or when movement is simulated in VR). Moreover, while previous work on human navigation primarily used environments with a flat surface, mobile neuroimaging methods will allow for the investigation of the encoding of volumetric space and movements in the vertical dimension (such as walking up or down staircases or climbing) in the human brain. Furthermore, mobile methods can provide insights into how the human brain encodes spatial information during dynamic scenarios that require interaction with the environment of an individual or with other individuals who are moving through space (such as how the brain of a soccer player keeps track of multiple moving players). Another important future area of study will be the interplay between the neural representations of space and other cognitive processes such as episodic memory formation (which involves the integration of information about space, time, sensory cues, emotional states and other contextual information) or decision-making (such as during route planning) in complex real-world situations that involve movement.

Utilizing the DBS capabilities of implanted devices, future studies will also be able to investigate whether stimulation of subregions within the MTL has an impact on navigational function or the formation of episodic memories during real-life experiences. Such causal tests of brain-behaviour relationships have previously been possible only under restricted and non-natural conditions in stationary participants (using invasive^{79–81} or non-invasive stimulation⁸²) but can now be performed over the short or long term during real-world experiences. Moreover, understanding the neural mechanisms underlying navigational and memory functions will provide unique insight into the causes and possible interventions for brain disorders that affect these functions, such as AD, epilepsy or PTSD. For example, it has been shown that changes in navigation-related and memory-related MTL activity are among the earliest signs of AD^{63,83}. As thousands of patients with epilepsy have chronically implanted recording electrodes in MTL regions, mobile long-term recordings from these patients could be

used to identify AD-related biomarkers in longitudinal studies and enable efficient methods for early detection of the disease. This would, in turn, allow the administration of treatment options at the earliest disease stages, together with long-term iEEG recordings to measure long-term treatment response in affected brain regions.

Social cognition and interaction

A critical aspect of human cognition is participation in societal structures through complex social interactions. Social neuroscience seeks to determine how social interactions dynamically modify cognition, behaviour and the brain activity of interacting individuals^{84,85}. Decades of social psychological research have highlighted personal and environmental factors that modulate social interactions and relationships between individuals. Critically, this has included investigation of relationships in multi-individual scenarios such as dyads and groups^{86–89}. This work has led to the development of conceptual frameworks and theoretical models of social behaviour and cognition, including the dual-process model^{90,91} (in which both implicit and explicit processes can exert influence on social behaviour and/or cognition), theory of mind⁹² (which concerns the ability to infer the mental state of another person) and social complexity theory⁹³ (in which a group of interacting individuals is viewed as a complex adaptive system), that have been applied to study the behaviours of human and non-human collectives. For example, concepts from complex systems theory, such as criticality⁹⁴ (describing a situation in which individuals adaptively switch into and out of coordinated group behaviours) and emergence (the situation in which unique group behaviours arise that were non-existent at the individual level), have been used to investigate individual, dyadic and collective behaviour^{95,96} (such as coordination and cooperation) in both humans^{97–99} and non-human animals¹⁰⁰. Given that humans exist and behave as part of nested hierarchies of collectives within collectives, a more complete understanding of optimal and disordered individual and community function is needed. This will require a multi-scale approach¹⁰¹ in which movement-robust forms of neuroimaging are applied in groups within naturalistic environments where emergent behaviours arise in response to manipulated environmental pressures and incentives.

Prior non-invasive immobile neuroimaging studies in humans have developed creative ways to study social behaviours in stationary participants through the presentation of images of others or social scenes, pre-recorded videos depicting social interactions, two-person live video (dual-video), and VR avatars that are updated in real time based on participant actions. These studies have investigated a myriad of social behaviours, including emotional face processing, joint gaze and attention, and implicit and explicit bias^{102,103}. For example, dual-video studies (using fMRI or MEG) in dyads have highlighted how interactive behaviours (such as competitive games, facial emotional expression and recognition, and speaker–listener communication) modulate coordinated brain activation patterns (interbrain synchrony) across individuals^{104–107}. Another dual-video study using scalp EEG identified increased interbrain oscillatory synchrony when a participant mimicked the hand movements of another person in real time¹⁰⁸. However, while the findings of these and other studies have accelerated the emerging field of social cognitive neuroscience and elucidated several neural mechanisms underlying social behaviour and cognition, they did not involve live face-to-face interaction, which has been shown to rely on distinct neural mechanisms and to amplify interbrain synchrony between individuals^{102,109,110}.

Mobile non-invasive neuroimaging studies of social interactions in humans have allowed researchers to extend the findings from

studies conducted in immobile individuals by recording brain activity simultaneously from groups of participants interacting face-to-face in laboratory or real-world environments: this is typically referred to as ‘hyperscanning’^{102,103,111}. Mobile scalp EEG hyperscanning studies have yielded several findings, including the identification of real-world behavioural interactions that modulate interbrain synchrony^{112,113}. For example, one multi-person study recorded from groups of high school students during several sessions over the course of a semester in the classroom found that the degree of interbrain oscillatory synchrony across classmates predicted class engagement and social dynamics, highlighting the utility of longitudinal and multi-person studies in real-world settings¹¹². Another study recorded scalp EEG activity from multiple dyads of museum visitors and found that interbrain oscillatory synchrony was modulated by their levels of empathy, closeness, engagement, joint action and eye contact, emphasizing the importance of face-to-face experiences that can modulate neural mechanisms of social cognition¹¹³.

Recent developments in mobile invasive neuroimaging methods are poised to build on current understanding by investigating how deep brain structures are involved in spontaneous real-world human interactions during movement. Indeed, a key advantage of mobile invasive neuroimaging methods is the opportunity to study spontaneous social interactions in the real world: as iEEG recordings are continuous, it is possible to minimize the awareness of study participants that they are being observed and thus the resulting regulation of social behaviours as compared to a laboratory-based experiment. Future mobile iEEG studies could, for example, examine neural dynamics related to the generation and perception of emergent affective states, natural facial expressions, vocalizations, gestures, involuntary body mimicry and other social behaviours. These could then be compared to neural dynamics during non-social behaviours (Fig. 3c). Other possible future investigations could explore how subcortical regions support the complex social dynamics that emerge in group settings (including compassion, empathy and altruism) and that may influence cognitive processes (such as decision-making and implicit or explicit bias), enable prediction of the future actions of others during cooperative or competitive interactions, or differentially encode social and non-social rewards. It will also be interesting to study how social relationships or status (for example, competitor versus cooperator, leader versus follower, or in-group versus out-group) develop during short-term interactions or over repeated long-term interactions, and how these relationships modulate individual and interbrain dynamics. Furthermore, when combined with non-invasive mobile neuroimaging methods (using simultaneous iEEG and mobile scalp EEG, for example), there is an opportunity to investigate both subcortical and cortical activity during spontaneous, emergent group behaviours in naturalistic settings and thus to investigate interbrain network activity. Such mobile neuroimaging setups could also be used to perform interbrain analyses investigating the dynamic properties of individual brains and the extent to which they form part of a coherent collective-level computational entity. This will permit, for example, the study of multi-scale competency, which is the concept that effective behaviours can be observed across each level or scale of the social hierarchy, from the individual to the group and organization level. The results from these studies will provide deep multi-scale insights into complex social systems underlying the adaptive and maladaptive patterns that can occur in spontaneous human group behaviour¹¹⁴, how individual brain activity gives rise to self-organizing, intelligent, collective behaviours, and how collectively intelligent behaviours are shaped by the context in which

they occur. Further, this multi-scale perspective may be necessary to fully understand psychopathologies and the broader social structures that individuals with psychopathologies are embedded within.

Numerous disorders affect social behaviours and community function^{115–117}, including autism spectrum disorder^{118,119}, attention deficit hyperactivity disorder¹²⁰, social anxiety disorder¹²¹, bipolar disorder¹²², schizophrenia¹²³ and borderline personality disorder¹²⁴. Mobile invasive and non-invasive neuroimaging approaches provide an opportunity to investigate these disorders in ecologically valid settings. This could facilitate the identification of electrophysiological biomarkers of behavioural symptoms to assist with earlier detection of difficult-to-diagnose disorders and the development of more targeted and neurophysiologically informed interventions¹²⁵ as well as allowing us to evaluate how whole-body movements (such as volitional or involuntary body mimicry) may be altered. Thus, advancing our understanding of the neurophysiology of social interaction will build a foundation on which to improve our approaches to treating disorders that affect social behaviours.

Movement and motor-related functions

Humans engage in complex movement patterns, such as walking, gesturing and vocalization, that can co-occur and involve the rapid coordination of multiple muscles. Non-human animal studies have shown that neural activity patterns differ during free movement relative to constrained behaviours^{126,127}. How the human brain precisely controls volitional and complex movements remains unclear, in part owing to the motion constraints of traditional human neuroimaging approaches; however, such knowledge would serve a significant role in informing the development of interventions for movement-related disorders.

The ability to walk (that is, gait) enables mobility and independence in daily life. The availability of mobile neuroimaging techniques (such as scalp EEG) has enabled studies on the neural correlates of gait in ambulating humans. This work has identified fluctuations in brain activity in motor and somatosensory regions in relation to the gait cycle^{128–131}, and these findings have been confirmed with mobile iEEG recordings from the motor cortex¹³⁰ and basal ganglia¹³¹. Specifically, these studies reported modulations in the amplitude of oscillatory activity in the upper beta and high gamma frequency range that encoded movement onset, termination, muscle synergies and freezing of gait in individuals with Parkinson disease. Decoding such parameters from neural signals is an essential prerequisite for the implementation of neuroprosthetic devices such as those intended to provide spinal cord stimulation for gait rehabilitation or restoration¹³². Another study investigated the cortical mechanisms underlying conscious modification of ongoing walking compared to natural walking and identified decreases in the power of multiple oscillations at particular phases of the gait cycle during gait modification¹³³. These findings revealed the nuanced neural dynamics that support intentional movement modification and provided key insights that could inform the development of BMIs for rehabilitation^{133,134}. Another critical aspect of natural walking in daily life is the ability to rapidly navigate around obstacles, a skill that can become impaired in advanced age and motor-related disorders^{135,136}. One mobile scalp EEG study showed that the updating of motor plans occurred at the time that an obstacle appeared, rather than when an individual arrived at the obstacle, and that beta oscillations (–13–30 Hz) marked the traversal of an obstacle¹³⁷. Mobile neuroimaging approaches have also suggested overlapping neural mechanisms during real and imagined movement²⁴, which is consistent with BMI studies showing successful control of robotic arms in healthy

individuals¹³⁸ and patients with paralysis^{22,23}. Mobile non-invasive neuroimaging approaches have also enabled the investigation of expressive movement, such as dance, within a burgeoning field of research looking into the neural computations underlying complex coordinated motor action, memory and timing¹³⁹.

Research on the neural correlates of cognitive–motor interference has also been possible in studies where mobile neuroimaging techniques have been coupled to paradigms in which two tasks must be completed simultaneously (for example, performing a cognitive task while executing a secondary motor task). Both cognitive performance and motor behaviour have been shown to depend on whether a task is performed in an ambulatory or stationary format^{32,140,141}. More specifically, the neural responses observed in classical cognitive paradigms (such as Go/NoGo tasks or oddball tasks) appear to be altered when they are attempted during walking compared to immobility, highlighting the importance of investigating cognitive–motor interference in real-world and ambulatory scenarios^{32,140,142}. Another study focusing on dual motor tasks showed that sensorimotor rhythms are differentially modulated in young and elderly (>70 years) participants, suggesting that age-related decline may further affect the competition for cognitive resources¹⁴¹. Another approach used to investigate cognitive–motor inference involves cueing a motor behaviour modification in response to visual or auditory cues or asking participants to maintain motor behaviour in the presence of visual or physical distractors^{143,144}. In the former scenario, cognitive processes must translate sensory stimuli into motor behavioural modification, while in the latter, the visual or physical perturbations elicit corrective motor movements (for example, the act of balancing to prevent falling¹⁴³).

While these approaches have provided valuable insights into the cortical neurophysiology of natural and spontaneous movement, recent advances in the clinical treatment of movement disorders have provided an opportunity to chronically record longitudinal iEEG from deeper brain structures in individuals moving around during everyday activities. Traditional pharmacological approaches to the treatment of movement disorders, such as Parkinson disease and dystonia, often fall short and thus chronically implanted DBS devices within areas such as the subthalamic nucleus, ventral anterior or lateral thalamus, and globus pallidus have become a standard treatment⁵². Recent technological advances have enabled closed-loop stimulation and long-term chronic recordings from these devices for research studies and in clinical trials^{145–148}. These approaches enable stimulation to be more specific: for example, locked to a particular oscillatory phase or to a specific behavioural metric such as a particular movement rhythm. Behavioural measurements can be captured, using accelerometers or electromyographs that are integrated into wearable sensors such as smartwatches, and used to ensure that stimulation coincides with specific phases of motor behaviour such as tremor rhythm¹⁴⁹. Thus, a new subfield of research has emerged in which deep brain mechanisms of movement-related functions and disorders can be studied outside of the traditional laboratory or clinic during real-world behaviours and daily activities as well as in a longitudinal setting.

Longitudinal studies using these mobile iEEG methods in individuals with movement disorders have been used to identify the neurophysiological mechanisms associated with symptom fluctuations and aberrant movements. These studies have highlighted, for example, the pathophysiological role of cortico-subthalamic circuit theta oscillations in cervical dystonia dyskinesias and subthalamic beta activity in rigid or akinetic states in Parkinson disease^{145,147}. The chronic and mobile aspects of these brain recordings, when combined with

on-body wearable sensors, provide a means to study the mechanisms underlying successful or unsuccessful movements. Furthermore, they could enable the observation of the neurophysiological mechanisms that relate to spontaneous motor behaviours associated with daily activities, such as walking, reaching, grasping, driving or speaking, or behaviours that pose challenges for patients^{148,150}. Moreover, such real-world brain–behaviour quantification and synchronization studies create an opportunity to identify clinically meaningful neurophysiological signatures that can, in turn, improve closed-loop treatments (Fig. 4a). For example, one mobile iEEG study, in which 2,600 h of at-home recordings were collected, found that increased oscillatory coherence between the subthalamic nucleus and motor cortex at particular frequencies differentiated between dyskinetic on and off states in a real-world setting¹⁴⁵. These results demonstrate how long-term mobile iEEG can be performed with minimal intrusion to normal activities and how such research studies can provide insight into spontaneous symptoms without the need to artificially elicit motor deficits in a laboratory setting. Similar studies in the future could allow for personalized treatment approaches and are also poised to illuminate the neurophysiological mechanisms underlying successful movement patterns.

As more individuals receive treatment via closed-loop DBS devices, not only for Parkinson disease but also for epilepsy and other disorders, there will be increased data available to help us understand inter-individual differences and similarities in the neural mechanisms underlying normative and pathological motor-related (dys)functions. Together with non-invasive mobile neuroimaging methods, this will provide an opportunity to study simple and more complex coordinated movements (such as those seen during exercise, sports or dancing), to illustrate how these movements are learned, initiated and modified, and to develop personalized treatment approaches for movement-related disorders.

Emotional affect and expression

Research in the field of affective neuroscience (the study of how the brain processes emotion) has led to the prominent view that affective processes are so tightly integrated at cognitive and neural levels that it is impossible to separate them^{151,152}. Many cognitive processes, including memory, attention, language and decision-making, are strongly influenced by and interact with emotional states to contribute to behaviour¹⁵². Moreover, a large body of research has demonstrated that emotions not only evoke bodily feedback (such as movements in response to an aversive stimulus) but that bodily experience and emotions influence each other in a bi-directional fashion¹⁵³. Owing to the strong interplay between affective processes, bodily experience and cognition, it has been suggested that emotions should be modelled holistically, as whole brain–body phenomena¹⁵⁴.

Studying emotional processes while considering these brain–body dynamics poses a major challenge for affective neuroscience. Non-mobile neuroimaging methods limit or eliminate the impact of bodily sensations (including body movements, gestures or facial muscle contractions), thereby neglecting these critical interactive dynamics. In addition, experimental access to emotional states is challenging because of the difficulty in eliciting naturalistic behaviours in laboratory settings. While laboratory-based studies of emotion primarily use behavioural paradigms that involve the presentation of images, film clips and cues for autobiographical recall, it is unclear to what extent these techniques elicit emotional responses with the same strength and of the same quality as natural emotionally laden experiences in

the real world¹⁵⁵. Finally, emotional states can evolve and fluctuate over long time courses (days, months and years), making them inherently difficult to study in laboratory experiments.

Mobile neuroimaging methods provide opportunities to overcome these limitations by enabling neural recordings during emotional experiences in real-world situations, without restricting the bodily responses of an individual. For example, mobile iEEG studies in patients with chronic neural implants can record from emotionally relevant brain regions (such as the nucleus accumbens, amygdala and prefrontal cortex¹⁵²) during significant events (such as the birth of a child, death of a loved one, birthdays or weddings) or in fearful situations (such as scary rides, haunted houses or traumatic events). This can thereby provide unique insights into the neural mechanisms underlying naturalistic fluctuations in positive or negative affect or during the formation and expression of fear-related memories and their interaction with associated bodily responses. Moreover, long-term recordings can determine how neural activity changes over long timescales not only at the time of the event but also in the days, weeks and years that follow.

Another promising area of investigation for mobile brain recordings is the impact of environmental settings and physical activity on emotion and mental health¹⁵⁶. For example, mobile scalp EEG studies have investigated the effects of different real-world settings (including busy urban versus quiet green spaces) and activities (such as active exploration versus passive viewing) on brain activation and associated emotions^{157–160}, providing insight into mechanisms of emotional and mental recovery from stress and fatigue that would not be possible in stationary and laboratory-based studies. Moreover, mobile non-invasive neuroimaging has been used increasingly for emotion recognition, in which neural signals are automatically classified in real-time to determine the emotional or mental state of an individual¹⁶¹. The future potential of non-invasive emotion-recognition systems for both research and industry seems endless, ranging from areas of human–computer interaction and artificial intelligence (for example, to adapt computer, robot or game behaviour with respect to user experience), e-learning (for example, to adapt online course material to the mental state of a student) and entertainment (for example, music players that select content based on user mood) to medical technology (such as remote and long-term tracking of treatment progress in individuals with MDD).

Psychiatric disorders are widespread and, despite pharmacological and psychotherapeutic approaches, a substantial number of patients remain resistant to treatment¹⁶². Ongoing efforts utilizing closed-loop DBS devices to treat mood and anxiety-related disorders, such as MDD^{53,54,163}, PTSD⁵⁵ and OCD⁵⁶, have yielded promising results and are ushering in a new era of research on emotional affect and expression. Closed-loop DBS devices in these patients enable mobile iEEG recording that can be combined with accessible wearable biometric sensors and symptom-tracking devices. As an example, one study⁵⁶ combined more than 1,000 h of at-home mobile iEEG data, heart rate measurements and OCD symptom intensity ratings to investigate neurophysiological changes in deep brain regions associated with fluctuating and spontaneous anxiety-related symptoms (Fig. 4b,c). This revealed a negative correlation between ventral capsule (VC) and ventral striatum (VS) delta power and OCD symptom intensity and showed that VS stimulation was associated with increased positive affect. A separate pair of studies in an individual with treatment-resistant MDD^{53,54} found symptom-specific neurophysiological activity that responded to VC/VS stimulation in a dose-dependent manner and led to

Perspective

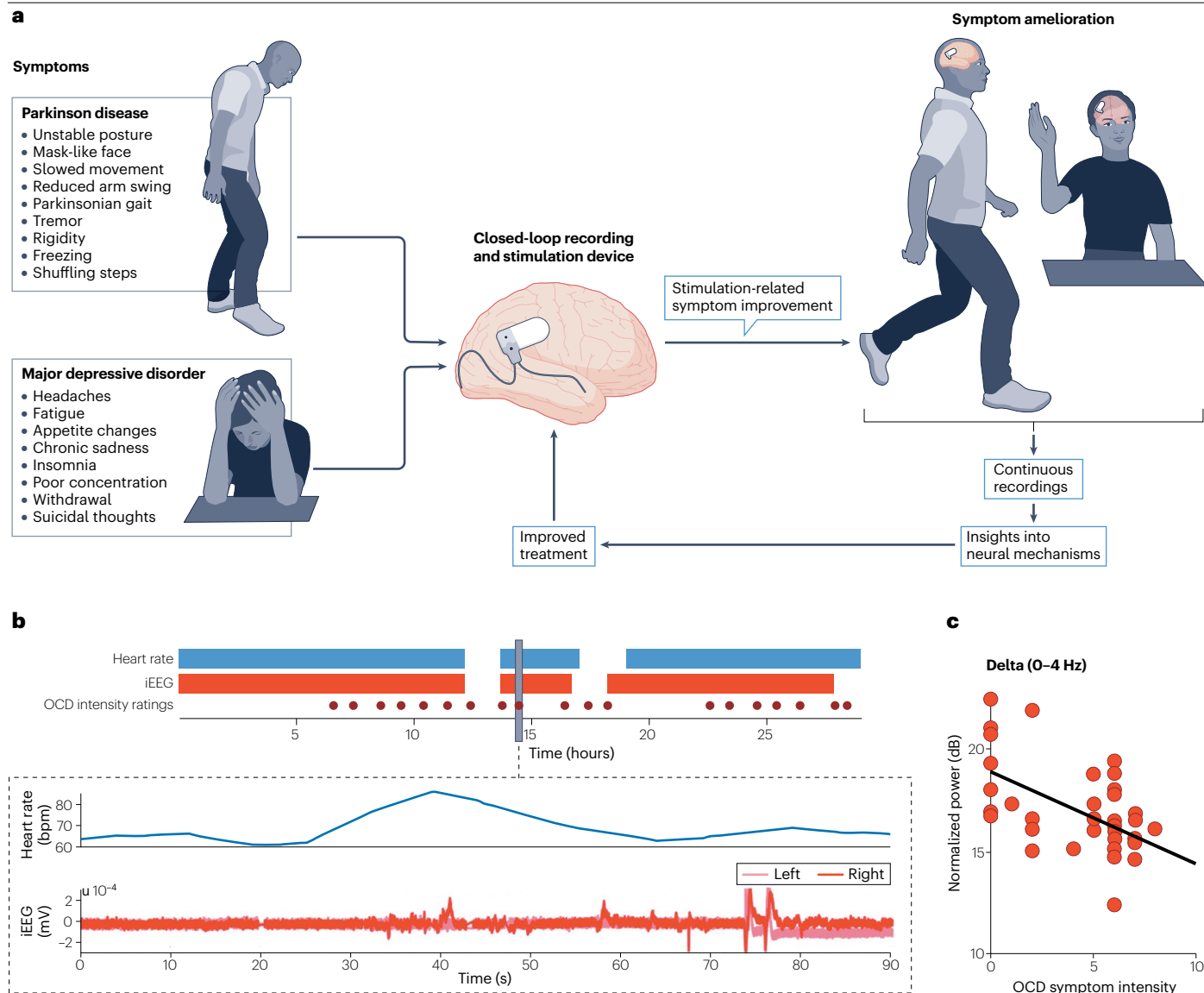


Fig. 4 | Studying motor-related functions and emotional affect with mobile neuroimaging. a, There are opportunities to develop personalized treatments and advance our understanding of the neural mechanisms underlying motor-related functions (top) and psychiatric symptoms (bottom) in individuals with a range of conditions using chronic mobile intracranial electroencephalography (iEEG) recordings. The schematic shows example symptoms of two disorders that might be targeted with this approach – Parkinson disease and major depressive disorder – and illustrates how closed-loop deep brain stimulation might be tailored to relieve symptom burden. Insights gained through continuous iEEG recordings in patients after symptom amelioration can advance our knowledge of normal motor-related functions and affective behaviours (right), which in turn enables progress in designing effective treatment

approaches for affected patients. **b**, An example of a study in which long-term mobile iEEG recordings were obtained from electrodes implanted in the left ventral capsule/ventral striatum and right bed nucleus of the stria terminalis. The timing of the collection of iEEG data, biometric heart rate monitoring and behavioural obsessive compulsive disorder (OCD) intensity ratings are shown at the top for one participant⁵⁶, together with a 90-s segment of the data shown below. **c**, Self-reported OCD symptom intensity (on a scale of 0–10) negatively correlated with normalized delta power (0–4 Hz) recorded in the ventral capsule/ventral striatum 1 min before and after each self-report from the patient shown in part **b**, captured across 3 days of continuous recording. The black line represents the least-squares fit. Parts **b** and **c** are adapted from ref. 56, Springer Nature Ltd.

clinical improvement when used to trigger closed-loop DBS. Together, these studies highlight a key advantage of chronic mobile invasive neuroimaging methods: they allow for the assessment of spontaneous and natural symptom fluctuations over long time periods, which would not be possible in short-term laboratory-based studies. Such

mobile long-term recordings may further enable the identification of novel disease-related biomarkers and the development of personalized closed-loop DBS treatments that are more likely to be effective in real-world settings (Fig. 4a). Additionally, short-term and long-term tracking of treatment responses will provide insight into both the

disease state and the typical physiology (during asymptomatic periods) of human emotion in the real world. This is important because human emotions are strongly influenced by small and large fluctuations in internal states, relationships with surrounding individuals and day-to-day experiences, all of which are difficult to simulate and control in laboratory settings.

In sum, mobile neuroimaging studies of emotional affect and expression, combined with wearable technologies, can allow researchers to observe the development and full cycle of authentic emotional states as they occur spontaneously within the context of the day-to-day life of an individual and over natural timescales.

Challenges of mobile human neuroimaging

Technological advances that enable the measurement of brain activity during naturalistic behaviour and in dynamic real-world environments also bring along new challenges for experimental design, data acquisition and analysis as well as for the interpretation of findings. Traditional laboratory studies are often designed to maximize experimental control by isolating a few variables of interest (considered the 'signal') while limiting or excluding the impact of irrelevant variables (considered 'confounds' or 'noise')^{7,164}. By contrast, real-world settings contain many variables that are considerably harder to control. For example, in natural social settings, the behaviour and cognitive processes of a research participant might be influenced by luminance, sounds, odours, distracting environmental elements, movements of the participant and that of other people, complex emotional and interpersonal factors, and the behaviour of others. Conducting such studies thus requires innovative approaches for experimental design to provide an adequate degree of experimental control (by eliminating or reducing unwanted influences) while at the same time allowing an appropriate and analytically manageable level of naturalism and uncontrolled influences to enable ecological generalizability. One step towards studying completely natural behaviour in the real world is to design studies that include variables that have previously been considered noise or confound into the experimental design and analysis strategy. This, in turn, requires data acquisition and synchronization solutions that enable the recording of multimodal data, so that all variables (those of primary interest as well as possible confounds) can be analysed post hoc. Rapid recent progress in the development of wearable technologies has enabled the simultaneous recording of multiple data streams, for example, using body-motion and eye-tracking systems, physiological sensors and audiovisual recordings (Box 1).

Given the large number of data streams that can be collected, data analysis methods must appropriately accommodate for the added complexity. There is a need for advanced mathematical methods and models (including mixed-effect models, multimodal models and multivariate methods), similar to those that have been used for behavioural studies in freely moving rodents and primates (including humans)^{9,14,71,165–167}. Furthermore, it will be imperative to draw techniques from computational ethology, a field that employs automated methods (including machine learning, deep neural networks and computer vision) to quantify behavioural motifs and rich stimuli in the natural world and complex virtual environments³. The use of these advanced analytical approaches will help capture and explain the 'noisiness' (that is, the variability in the ways that different individuals express a particular behavioural motif) of naturalistic behaviours. For example, computational ethology methods could be used to quantify behavioural variables, such as cooperativeness, based on body language and facial expressions¹⁶⁸. These methods could also be applied to

complex environments (for example, by automating the classification of types of landmarks) to extract and interpret meaningful conclusions from the interactions of humans with others as well as with their environmental setting³, as demonstrated in previous studies^{169,170}. Such advanced approaches will help link multi-dimensional measurements of behaviour to cognitive states and neural activity.

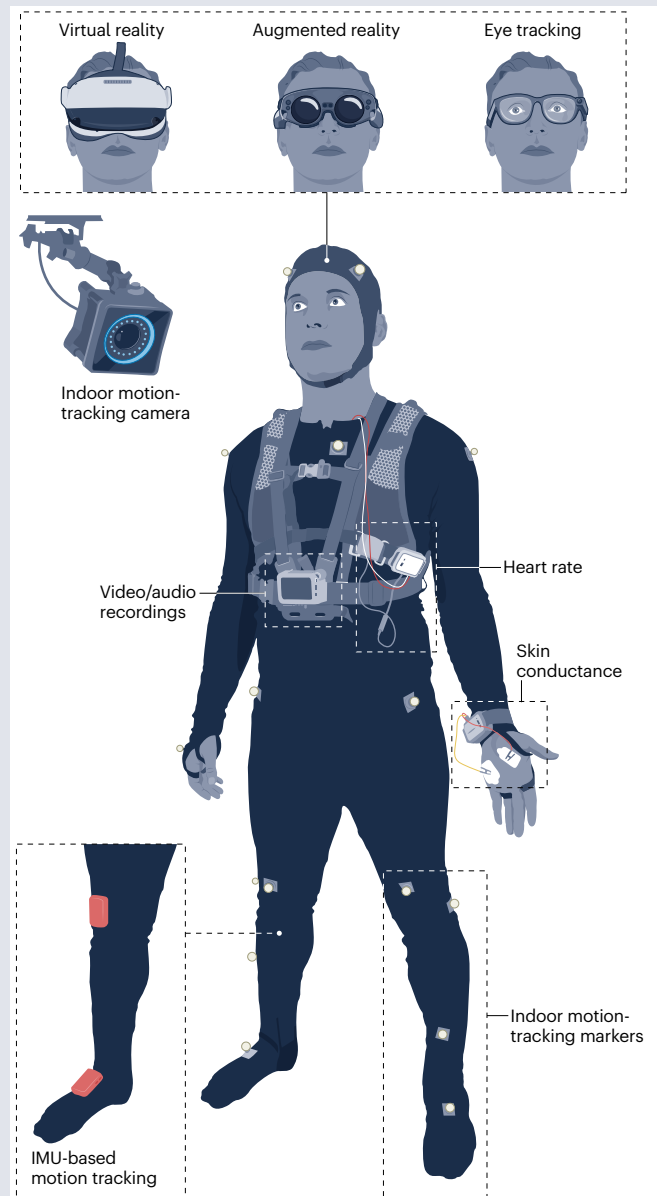
One limitation of mobile iEEG recordings is the selective coverage of electrode implantation sites, which are determined by the particular clinical indications of an individual⁷⁹. There is always a limited number of simultaneous recording sites (usually four) per person. This limitation can be offset to some extent by recruiting many participants for these studies (which may become more feasible given the large and growing population of patients with implanted electrodes for various medical reasons) to allow for data collection across many pooled electrode channels. Furthermore, recent technological developments allow mobile iEEG recordings (and even single-neuron activity) in individuals with a larger number of electrodes implanted (>100 recording channels), for example, those who are undergoing epilepsy monitoring in hospital settings¹⁷¹. The range of brain structures that can be recorded from is also selected based on clinical need. Currently, the most common regions implanted are in the MTL and basal ganglia, and also, but less frequently, the frontal, occipital, insular and parietal areas⁷⁹. In addition, investigational device exemptions have been acquired to utilize these devices for the treatment of cervical dystonia¹⁴⁷, MDD⁵⁴, PTSD⁵⁵, binge eating disorder⁵⁷ and OCD⁵⁶, which has expanded the range of regions implanted to include areas such as the subthalamic nucleus, motor cortex, VC and nucleus accumbens. Non-invasive mobile neuroimaging approaches (such as mobile scalp EEG, OPM-MEG and fNIRS) can circumvent these limitations by offering broad coverage of brain regions, although the signal is most robust from superficial structures. Non-invasive recordings could also be combined with iEEG recordings to offer a dual approach that combines recordings from deep and superficial structures for unprecedented investigations.

Another challenge arises from the fact that mobile iEEG recordings can be obtained only from people with medical conditions (such as epilepsy^{51,172,173}), limiting the extent to which the results can be generalized to healthy participants. Hence, several strategies should be adopted when conducting these studies to minimize the impact on the interpretability and generalizability of the data obtained. The analysis of data from individuals with particular conditions requires specialized algorithms to detect and exclude time periods of abnormal (epileptic, for example) brain activity in recordings¹⁷⁴. Furthermore, as recordings occur over the long term, researchers can view historical data and recruit participants with a low number of abnormal events, including those that have shown a positive clinical response to treatment. With these approaches, previous studies have found that ~3% of the data during experimental sessions were affected by epileptic activity^{58,68,71}, leaving most of the data available for testing hypotheses related to intended research questions. Moreover, differences in neural dynamics that are observed across two or more behavioural conditions (within an experimental task) and/or clinical conditions (such as epilepsy versus Parkinson disease) would help minimize the possibility that brain-behaviour relationships are related to disease. With the rise in implantable neural devices being used across a wider range of neuropsychiatric disorders, there may be an increased generalizability of findings independent of disease. Additionally, keeping records of medications that a participant may be taking and including them in statistical models should be considered. Non-invasive neuroimaging techniques enable recordings in healthy participants. Studying the human brain with

Box 1

Multi-dimensional recordings for mobile behavioural studies in humans

Studying freely moving participants in complex scenarios and real-world settings requires multi-dimensional recordings of numerous variables, including those considered to be ‘noise’ or ‘confounds’, in order to be able to include these variables in the study design and analyse their impact on human cognition and behaviour. Besides mobile neuroimaging data, recording such multi-dimensional data is possible through the use of modern technological wearable measurement systems that can record behavioural, physiological and environmental influences (see the figure). For example, within indoor environments, the movement of people and objects can be recorded with optical motion-tracking systems. These systems continuously capture the position of reflective wearable markers with sub-millimetre resolution through motion-tracking cameras, and this can be used to analyse positional or directional data (such as location in the environment or movement speed) or even biomechanical information (such as gait analysis). Alternatively, an inertial measurement unit (IMU) system, using a combination of accelerometers, gyroscopes and magnetometers, can be mounted on multiple parts of the body to track motion without the need for stationary equipment such as cameras. IMUs can thus be used to capture movement and positional or orientational information more flexibly in completely natural indoor or outdoor environments, although they provide lower spatial precision than optical motion-tracking systems. Audio and video recordings (captured with body-mounted cameras, for example) enable recordings of environmental cues. Mobile eye-tracking systems allow measurement of eye movements, pupil position, pupil size and gaze position, and this can be mapped onto video recordings of the view that a participant has in order to determine their focus of visual attention at any point in time. Wearable systems also enable the measurement of physiological parameters such as heart rate, respiration or skin conductance. These recording systems can be combined with various stimulus presentation technologies, such as VR headsets (head-mounted displays), augmented reality (AR) headsets (which allow the integration of digital elements, such as virtual objects, into the real-world environment) or used without digital stimulus presentation technology in real-world studies. Outside the laboratory, wearable devices, such as smartwatches and other portable handheld devices, can be used, often in combination with specifically designed smartphone apps that can capture additional variables such as physiological measurements (including heart rate or acceleration), symptom ratings or sleep quality^{2,5,56}. Importantly, the data streams from multiple recording systems need to be synchronized (temporally aligned) with each other and with data from neural recordings to allow a precise analysis of the influence of an individual variable on study results. This synchronization can be achieved via ‘marker’ signals sent to the individual recording system (if they allow input of such signals) or via separate technical solutions (such as the recording of ‘timestamps’ for individual events, optical or auditory marker signals captured by audiovisual recordings, or network time protocols)¹⁴⁵. Most of the required technical solutions (computer code, for example)



for data synchronization have been implemented and are openly available for the [Mo-DBRS platform](#)⁵⁸ (a technical platform to enable deep brain recordings and stimulation through implanted neurostimulation systems) or from the [Open Mind Consortium](#) (a consortium formed to accelerate cooperation and innovation in the use of implantable neurostimulation systems). Schematic based on image provided by J. Whisman.

(both stationary and mobile) non-invasive methods thus provides an excellent opportunity to carry out complementary and comparative studies, to contrast data between patients and healthy participants, and to identify disease-related influences on neural and behavioural findings. While these strategies are critical to enabling meaningful interpretations of data, it should be noted that most people with epilepsy and other clinical conditions are able to function normally in society and to perform many cognitive functions during everyday experiences – thus, the underlying neural mechanisms should and can be studied.

Conclusions

The standard approach in contemporary cognitive neuroscience is to perform neuroimaging studies under strictly controlled conditions in laboratory settings to isolate and investigate basic principles of neural mechanisms of cognition. It is often assumed that the findings will generalize from these controlled experimental settings to natural human behaviour^{7,164}; however, to date, it is largely unknown to what extent most of our knowledge reflects the complexity of cognitive processing under natural conditions. Until recently, many of the models and theories developed for or derived from laboratory experiments often could not be tested in real-world settings owing to the limitations of traditional human neuroimaging methods. Now, enabled by innovative advancements in mobile neuroimaging techniques, wearable behavioural devices to record physiological and environmental influences, and advanced computational data analyses, neuroscientists are able to investigate complex cognitive processes in freely moving and naturally behaving people that are exploring and interacting with their environment. These new technologies have the potential to enable first-in-human discoveries and the development of novel treatments for neurological and psychiatric disorders that are more likely to translate to real-world settings.

We argue that, for the field of cognitive neuroscience going forward, real-world studies of human cognition with mobile neuroimaging methods will be critical to test whether models that have been developed under laboratory conditions hold true in natural settings. Importantly, however, the value of mobile brain recordings goes far beyond post hoc validation (or invalidation) of laboratory-derived models. Instead, insights and perhaps unexpected findings from real-world studies will provide a foundation from which new theories and models can be developed. Thus, rather than a unidirectional approach, starting from a theory to be tested in the laboratory and validated in the real world, it will be critical to follow an approach where theories, laboratory-based experiments and real-world studies inform each other in a back-and-forth fashion, with the ultimate goal of gaining an ecologically valid understanding of human cognition and malfunctions in underlying neural systems. Lastly, further developments in mobile neuroimaging technologies, such as electrodes with the ability to record single-neuron activity or neurochemical signals during everyday life, will continue to speed up scientific progress in the years to come.

Published online: 12 April 2023

References

- Poldrack, R. A. & Farah, M. J. Progress and challenges in probing the human brain. *Nature* **526**, 371–379 (2015).
- Johnson, K. T. & Picard, R. W. Advancing neuroscience through wearable devices. *Neuron* **108**, 8–12 (2020).
- Mobbs, D. et al. Promises and challenges of human computational ethology. *Neuron* **109**, 2224–2238 (2021).
- Chow, T. E. & Rissman, J. Neurocognitive mechanisms of real-world autobiographical memory retrieval: insights from studies using wearable camera technology. *Ann. NY Acad. Sci.* **1396**, 202–221 (2017).
- Harari, G. M. et al. Using smartphones to collect behavioral data in psychological science: opportunities, practical considerations, and challenges. *Perspect. Psychol. Sci.* **11**, 838–854 (2016).
- Miller, G. The smartphone psychology manifesto. *Perspect. Psychol. Sci.* **7**, 221–237 (2012).
- Nastase, S. A., Goldstein, A. & Hasson, U. Keep it real: rethinking the primacy of experimental control in cognitive neuroscience. *NeuroImage* **222**, 117254 (2020).
- Musall, S., Kaufman, M. T., Juavinett, A. L., Gluf, S. & Churchland, A. K. Single-trial neural dynamics are dominated by richly varied movements. *Nat. Neurosci.* **22**, 1677–1686 (2019).
- Stringer, C. et al. Spontaneous behaviors drive multidimensional, brainwide activity. *Science* **364**, eaav7893 (2019).
- David, S. V., Vinje, W. E. & Gallant, J. L. Natural stimulus statistics alter the receptive field structure of V1 neurons. *J. Neurosci.* **24**, 6991–7006 (2004).
- Angelaki, D. E. & Cullen, K. E. Vestibular system: the many facets of a multimodal sense. *Annu. Rev. Neurosci.* **31**, 125–150 (2008).
- Taube, J. S., Valerio, S. & Yoder, R. M. Is navigation in virtual reality with fMRI really navigation? *J. Cogn. Neurosci.* **25**, 1008–1019 (2013).
- Steel, A., Robertson, C. E. & Taube, J. S. Current promises and limitations of combined virtual reality and functional magnetic resonance imaging research in humans: a commentary on Huffman and Ekstrom (2019). *J. Cogn. Neurosci.* **33**, 159–166 (2021).
- Mao, D. et al. Spatial modulation of hippocampal activity in freely moving macaques. *Neuron* **109**, 3521–3534 (2021).
- Chen, G., King, J. A., Burgess, N. & O’Keefe, J. How vision and movement combine in the hippocampal place code. *Proc. Natl Acad. Sci. USA* **110**, 378–383 (2013).
- Bohbot, V. D., Copara, M. S., Gotman, J. & Ekstrom, A. D. Low-frequency theta oscillations in the human hippocampus during real-world and virtual navigation. *Nat. Commun.* **8**, 14415 (2017).
- Aghajian, Z. M. et al. Impaired spatial selectivity and intact phase precession in two-dimensional virtual reality. *Nat. Neurosci.* **18**, 121–128 (2015).
- Aronov, D. & Tank, D. W. Engagement of neural circuits underlying 2D spatial navigation in a rodent virtual reality system. *Neuron* **84**, 442–456 (2014).
- Anderson, W. S. & Lenz, F. A. Review of motor and phantom related imagery. *Neuroreport* **22**, 939–942 (2011).
- Lyu, Y., Guo, X., Bekrater-Bodmann, R., Flor, H. & Tong, S. Phantom limb perception interferes with motor imagery after unilateral upper-limb amputation. *Sci. Rep.* **6**, 21100 (2016).
- Thomas, E., Dyson, M. & Clerc, M. An analysis of performance evaluation for motor-imagery based BCI. *J. Neural Eng.* **10**, 031001 (2013).
- Hochberg, L. R. et al. Reach and grasp by people with tetraplegia using a neurally controlled robotic arm. *Nature* **485**, 372–375 (2012).
- Hochberg, L. R. et al. Neuronal ensemble control of prosthetic devices by a human with tetraplegia. *Nature* **442**, 164–171 (2006).
- Hardwick, R. M., Caspers, S., Eickhoff, S. B. & Swinnen, S. P. Neural correlates of action: comparing meta-analyses of imagery, observation, and execution. *Neurosci. Biobehav. Rev.* **94**, 31–44 (2018).
- Crammond, D. J. Motor imagery: never in your wildest dream. *Trends Neurosci.* **20**, 54–57 (1997).
- Grèzes, J. & Decety, J. Functional anatomy of execution, mental simulation, observation, and verb generation of actions: a meta-analysis. *Hum. Brain Mapp.* **12**, 1–19 (2001).
- Jeannerod, M. Neural simulation of action: a unifying mechanism for motor cognition. *NeuroImage* **14**, S103–109 (2001).
- Bohil, C. J., Alicea, B. & Biocca, F. A. Virtual reality in neuroscience research and therapy. *Nat. Rev. Neurosci.* **12**, 752–762 (2011).
- Parsons, T. D. Virtual reality for enhanced ecological validity and experimental control in the clinical, affective and social neurosciences. *Front. Hum. Neurosci.* **9**, 660 (2015).
- Huffman, D. J. & Ekstrom, A. D. A modality-independent network underlies the retrieval of large-scale spatial environments in the human brain. *Neuron* **104**, 611–622 (2019).
- Niso, G., Romero, E., Moreau, J. T., Araujo, A. & Krol, L. R. Wireless EEG: a survey of systems and studies. *NeuroImage* **269**, 119774 (2023).
- Debener, S., Minow, F., Emkes, R., Gandras, K. & de Vos, M. How about taking a low-cost, small, and wireless EEG for a walk? *Psychophysiology* **49**, 1617–1621 (2012).
- Krugliak, A. & Clarke, A. Towards real-world neuroscience using mobile EEG and augmented reality. *Sci. Rep.* **12**, 2291 (2022).
- King, J. L. & Parada, F. J. Using mobile brain/body imaging to advance research in arts, health, and related therapeutics. *Eur. J. Neurosci.* **54**, 8364–8380 (2021).
- Gwin, J. T., Gramann, K., Makeig, S. & Ferris, D. P. Removal of movement artifact from high-density EEG recorded during walking and running. *J. Neurophysiol.* **103**, 3526–3534 (2010).
- Delorme, A., Sejnowski, T. & Makeig, S. Enhanced detection of artifacts in EEG data using higher-order statistics and independent component analysis. *NeuroImage* **34**, 1443–1449 (2007).
- Gramann, K. et al. Human brain dynamics accompanying use of egocentric and allocentric reference frames during navigation. *J. Cogn. Neurosci.* **22**, 2836–2849 (2010).
- Seeber, M. et al. Subcortical electrophysiological activity is detectable with high-density EEG source imaging. *Nat. Commun.* **10**, 753 (2019).
- Delaux, A. et al. Mobile brain/body imaging of landmark-based navigation with high-density EEG. *Eur. J. Neurosci.* **54**, 8256–8282 (2021).

40. Gehrke, L. & Gramann, K. Single-trial regression of spatial exploration behavior indicates posterior EEG alpha modulation to reflect egocentric coding. *Eur. J. Neurosci.* **54**, 8318–8335 (2021).
41. McKendrick, R. et al. Into the wild: neuroergonomic differentiation of hand-held and augmented reality wearable displays during outdoor navigation with functional near infrared spectroscopy. *Front. Hum. Neurosci.* **10**, 216 (2016).
42. Piper, S. K. et al. A wearable multi-channel fNIRS system for brain imaging in freely moving subjects. *NeuroImage* **85**, 64–71 (2014).
43. Brigadoi, S. et al. Motion artifacts in functional near-infrared spectroscopy: a comparison of motion correction techniques applied to real cognitive data. *NeuroImage* **85**, 181–191 (2014).
44. Koenraadt, K. L. M., Roelofsens, E. G. J., Duysens, J. & Keijsers, N. L. W. Cortical control of normal gait and precision stepping: an fNIRS study. *NeuroImage* **85**, 415–422 (2014).
45. Takizawa, R. et al. Neuroimaging-aided differential diagnosis of the depressive state. *NeuroImage* **85**, 498–507 (2014).
46. Suda, M. et al. Frontopolar activation during face-to-face conversation: an in situ study using near-infrared spectroscopy. *Neuropsychologia* **48**, 441–447 (2010).
47. Suda, M. et al. Autistic traits and brain activation during face-to-face conversations in typically developed adults. *PLoS ONE* **6**, e20021 (2011).
48. Boto, E. et al. Moving magnetoencephalography towards real-world applications with a wearable system. *Nature* **555**, 657–661 (2018).
49. Brookes, M. J. et al. Magnetoencephalography with optically pumped magnetometers (OPM-MEG): the next generation of functional neuroimaging. *Trends Neurosci.* **45**, 621–634 (2022).
50. Krauss, J. K. et al. Technology of deep brain stimulation: current status and future directions. *Nat. Rev. Neurol.* **17**, 75–87 (2021).
51. Morrell, M. J., RNS System in Epilepsy Study Group. Responsive cortical stimulation for the treatment of medically intractable partial epilepsy. *Neurology* **77**, 1295–1304 (2011).
52. Lozano, A. M. et al. Deep brain stimulation: current challenges and future directions. *Nat. Rev. Neurol.* **15**, 148–160 (2019).
53. Scangos, K. W., Makhoul, G. S., Sugrue, L. P., Chang, E. F. & Krystal, A. D. State-dependent responses to intracranial brain stimulation in a patient with depression. *Nat. Med.* **27**, 229–231 (2021).
54. Scangos, K. W. et al. Closed-loop neuromodulation in an individual with treatment-resistant depression. *Nat. Med.* **27**, 1696–1700 (2021).
55. US National Library of Medicine. *ClinicalTrials.gov* <https://clinicaltrials.gov/ct2/show/NCT04152993> (2021).
56. Provenza, N. R. et al. Long-term ecological assessment of intracranial electrophysiology synchronized to behavioral markers in obsessive-compulsive disorder. *Nat. Med.* **27**, 2154–2164 (2021).
57. Shivacharan, R. S. et al. Pilot study of responsive nucleus accumbens deep brain stimulation for loss-of-control eating. *Nat. Med.* **28**, 1791–1796 (2022).
58. Topalovic, U. et al. Wireless programmable recording and stimulation of deep brain activity in freely moving humans. *Neuron* **108**, 322–334 (2020).
59. Meisenhelter, S. et al. Cognitive tasks and human ambulatory electrocorticography using the RNS System. *J. Neurosci. Methods* **311**, 408–417 (2019).
60. Buzsáki, G. & Moser, E. I. Memory, navigation and theta rhythm in the hippocampal-entorhinal system. *Nat. Neurosci.* **16**, 130–138 (2013).
61. Behrens, T. E. J. et al. What is a cognitive map? Organizing knowledge for flexible behavior. *Neuron* **100**, 490–509 (2018).
62. Buzsáki, G., McKenzie, S. & Davachi, L. Neurophysiology of remembering. *Annu. Rev. Psychol.* **73**, 187–215 (2022).
63. Coughlan, G., Laczó, J., Hort, J., Minihane, A.-M. & Hornberger, M. Spatial navigation deficits — overlooked cognitive marker for preclinical Alzheimer disease? *Nat. Rev. Neurol.* **14**, 496–506 (2018).
64. Lester, A. W., Moffat, S. D., Wiener, J. M., Barnes, C. A. & Wolbers, T. The aging navigational system. *Neuron* **95**, 1019–1035 (2017).
65. Epstein, R. A., Patai, E. Z., Julian, J. B. & Spiers, H. J. The cognitive map in humans: spatial navigation and beyond. *Nat. Neurosci.* **20**, 1504–1513 (2017).
66. Ekstrom, A. D. & Ranganath, C. Space, time, and episodic memory: the hippocampus is all over the cognitive map. *Hippocampus* **28**, 680–687 (2018).
67. Jacobs, J. Hippocampal theta oscillations are slower in humans than in rodents: implications for models of spatial navigation and memory. *Philos. Trans. R. Soc. B Biol. Sci.* **369**, 20130304 (2014).
68. Aghajani, Z. M. et al. Theta oscillations in the human medial temporal lobe during real-world ambulatory movement. *Curr. Biol.* **27**, 3743–3751 (2017).
69. Courellis, H. S. et al. Spatial encoding in primate hippocampus during free navigation. *PLoS Biol.* **17**, e3000546 (2019).
70. Yartsev, M. M., Witter, M. P. & Ulanovsky, N. Grid cells without theta oscillations in the entorhinal cortex of bats. *Nature* **479**, 103–107 (2011).
71. Stangl, M. et al. Boundary-anchored neural mechanisms of location-encoding for self and others. *Nature* **589**, 420–425 (2021).
72. Lin, M.-H., Liran, O., Bauer, N. & Baker, T. E. Scalp recorded theta activity is modulated by reward, direction, and speed during virtual navigation in freely moving humans. *Sci. Rep.* **12**, 2041 (2022).
73. Ehinger, B. et al. Kinesthetic and vestibular information modulate alpha activity during spatial navigation: a mobile EEG study. *Front. Hum. Neurosci.* **8**, 71 (2014).
74. Do, T.-T. N., Lin, C.-T. & Gramann, K. Human brain dynamics in active spatial navigation. *Sci. Rep.* **11**, 13036 (2021).
75. Liang, M., Starrett, M. J. & Ekstrom, A. D. Dissociation of frontal-midline delta-theta and posterior alpha oscillations: a mobile EEG study. *Psychophysiology* **55**, e13090 (2018).
76. Piñeyro Salvidegoitia, M. et al. Out and about: subsequent memory effect captured in a natural outdoor environment with smartphone EEG. *Psychophysiology* **56**, e13331 (2019).
77. Park, J. L. & Donaldson, D. I. Detecting the neural correlates of episodic memory with mobile EEG: recollecting objects in the real world. *NeuroImage* **193**, 1–9 (2019).
78. Griffiths, B., Mazaheri, A., Debener, S. & Hanslmayr, S. Brain oscillations track the formation of episodic memories in the real world. *NeuroImage* **143**, 256–266 (2016).
79. Parvizi, J. & Kastner, S. Promises and limitations of human intracranial electroencephalography. *Nat. Neurosci.* **21**, 474–483 (2018).
80. Mankin, E. A. & Fried, I. Modulation of human memory by deep brain stimulation of the entorhinal-hippocampal circuitry. *Neuron* **106**, 218–235 (2020).
81. Suthana, N. & Fried, I. Deep brain stimulation for enhancement of learning and memory. *NeuroImage* **85**, 996–1002 (2014).
82. Polania, R., Nitsche, M. A. & Ruff, C. C. Studying and modifying brain function with non-invasive brain stimulation. *Nat. Neurosci.* **21**, 174–187 (2018).
83. Kunz, L. et al. Reduced grid-cell-like representations in adults at genetic risk for Alzheimer's disease. *Science* **350**, 430–433 (2015).
84. Kasai, K., Fukuda, M., Yahata, N., Morita, K. & Fujii, N. The future of real-world neuroscience: imaging techniques to assess active brains in social environments. *Neurosci. Res.* **90**, 65–71 (2015).
85. Adolphs, R. Conceptual challenges and directions for social neuroscience. *Neuron* **65**, 752–767 (2010).
86. van Dijk, E. & De Dreu, C. K. W. Experimental games and social decision making. *Annu. Rev. Psychol.* **72**, 415–438 (2021).
87. Spears, R. Social influence and group identity. *Annu. Rev. Psychol.* **72**, 367–390 (2021).
88. Amodio, D. M. Social cognition 2.0: an interactive memory systems account. *Trends Cogn. Sci.* **23**, 21–33 (2019).
89. Alcalá-López, D., Vogeley, K., Binkofski, F. & Bzdok, D. Building blocks of social cognition: mirror, mentalize, share? *Cortex* **118**, 4–18 (2019).
90. Sherman, J. W., Gawronski, B. & Trope, Y. *Dual-Process Theories of the Social Mind* (Guilford Publications, 2014).
91. Greenwald, A. G. & Lai, C. K. Implicit social cognition. *Annu. Rev. Psychol.* **71**, 419–445 (2020).
92. Frith, C. & Frith, U. Theory of mind. *Curr. Biol.* **15**, R644–646 (2005).
93. Aureli, F. & Schino, G. Social complexity from within: how individuals experience the structure and organization of their groups. *Behav. Ecol. Sociobiol.* **73**, 6 (2019).
94. Lombardi, F., Wang, J. W. J. L., Zhang, X. & Ivanov, P. C. Power-law correlations and coupling of active and quiet states underlie a class of complex systems with self-organization at criticality. *EPJ Web Conf.* **230**, 00005 (2020).
95. Tamariz, M. Replication and emergence in cultural transmission. *Phys. Life Rev.* **30**, 47–71 (2019).
96. De Vincenzo, I., Giannoccaro, I., Carbone, G. & Grigolini, P. Criticality triggers the emergence of collective intelligence in groups. *Phys. Rev. E* **96**, 022309 (2017).
97. Corrêa, U. C., Alegre, F. A. M., Freudenheim, A. M., Dos Santos, S. & Tani, G. The game of futsal as an adaptive process. *Nonlinear Dyn. Psychol. Life Sci.* **16**, 185–203 (2012).
98. Horsevad, N., Mateo, D., Kooij, R. E., Barrat, A. & Bouffanais, R. Transition from simple to complex contagion in collective decision-making. *Nat. Commun.* **13**, 1442 (2022).
99. Vilone, D., Realpe-Gómez, J. & Andrichetto, G. Evolutionary advantages of turning points in human cooperative behaviour. *PLoS ONE* **16**, e0246278 (2021).
100. Ribeiro, T. L., Chialvo, D. R. & Plenz, D. Scale-free dynamics in animal groups and brain networks. *Front. Syst. Neurosci.* **14**, 591210 (2021).
101. Marshall, J. A. R., Reina, A. & Bose, T. Multiscale modelling tool: mathematical modelling of collective behaviour without the maths. *PLoS ONE* **14**, e0222906 (2019).
102. Fan, S., Dal Monte, O. & Chang, S. W. C. Levels of naturalism in social neuroscience research. *iScience* **24**, 102702 (2021).
103. Kingsbury, L. & Hong, W. A multi-brain framework for social interaction. *Trends Neurosci.* **43**, 651–666 (2020).
104. Schippers, M. B., Roebroek, A., Renken, R., Nanetti, L. & Keysers, C. Mapping the information flow from one brain to another during gestural communication. *Proc. Natl Acad. Sci. USA* **107**, 9388–9393 (2010).
105. Anders, S., Heinze, J., Weiskopf, N., Ethofer, T. & Haynes, J.-D. Flow of affective information between communicating brains. *NeuroImage* **54**, 439–446 (2011).
106. Stephens, G. J., Silbert, L. J. & Hasson, U. Speaker-listener neural coupling underlies successful communication. *Proc. Natl Acad. Sci. USA* **107**, 14425–14430 (2010).
107. Watanabe, H. et al. Construction of a fiber-optically connected MEG hyperscanning system for recording brain activity during real-time communication. *PLoS ONE* **17**, e0270090 (2022).
108. Dumas, G., Nadel, J., Soussignan, R., Martinerie, J. & Garnero, L. Inter-brain synchronization during social interaction. *PLoS ONE* **5**, e12166 (2010).
109. Leong, V. et al. Speaker gaze increases information coupling between infant and adult brains. *Proc. Natl Acad. Sci. USA* **114**, 13290–13295 (2017).
110. Hirsch, J., Zhang, X., Noah, J. A. & Ono, Y. Frontal temporal and parietal systems synchronize within and across brains during live eye-to-eye contact. *NeuroImage* **157**, 314–330 (2017).
111. Babiloni, F. & Astolfi, L. Social neuroscience and hyperscanning techniques: past, present and future. *Neurosci. Biobehav. Rev.* **44**, 76–93 (2014).
112. Dikter, S. et al. Brain-to-brain synchrony tracks real-world dynamic group interactions in the classroom. *Curr. Biol.* **27**, 1375–1380 (2017).

113. Dikker, S. et al. Crowdsourcing neuroscience: inter-brain coupling during face-to-face interactions outside the laboratory. *NeuroImage* **227**, 117436 (2021).
114. Braha, D. Global civil unrest: contagion, self-organization, and prediction. *PLoS ONE* **7**, e48596 (2012).
115. Cotter, J. et al. Social cognitive dysfunction as a clinical marker: a systematic review of meta-analyses across 30 clinical conditions. *Neurosci. Biobehav. Rev.* **84**, 92–99 (2018).
116. Santamaría-García, H. et al. The role of social cognition skills and social determinants of health in predicting symptoms of mental illness. *Transl Psychiatry* **10**, 165 (2020).
117. Rokita, K. I., Dauvermann, M. R. & Donohoe, G. Early life experiences and social cognition in major psychiatric disorders: a systematic review. *Eur. Psychiatry* **53**, 123–133 (2018).
118. Tanabe, H. C. et al. Hard to 'tune in': neural mechanisms of live face-to-face interaction with high-functioning autistic spectrum disorder. *Front. Hum. Neurosci.* **6**, 268 (2012).
119. Kruppa, J. A. et al. Brain and motor synchrony in children and adolescents with ASD—a fNIRS hyperscanning study. *Soc. Cogn. Affect. Neurosci.* **16**, 103–116 (2021).
120. Gvirts Problovski, H. Z. et al. Impairments of interpersonal synchrony evident in attention deficit hyperactivity disorder (ADHD). *Acta Psychol.* **212**, 103210 (2021).
121. Saul, M. A., He, X., Black, S. & Charles, F. A two-person neuroscience approach for social anxiety: a paradigm with interbrain synchrony and neurofeedback. *Front. Psychol.* **12**, 568921 (2022).
122. Ospina, L. H. et al. Social cognition moderates the relationship between neurocognition and community functioning in bipolar disorder. *J. Affect. Disord.* **235**, 7–14 (2018).
123. Pijnenborg, G. H. M. et al. The predictive value of measures of social cognition for community functioning in schizophrenia: implications for neuropsychological assessment. *J. Int. Neuropsychol.* **15**, 239–247 (2009).
124. Bilek, E. et al. State-dependent cross-brain information flow in borderline personality disorder. *JAMA Psychiatry* **74**, 949–957 (2017).
125. Lau-Zhu, A., Lau, M. P. H. & McLoughlin, G. Mobile EEG in research on neurodevelopmental disorders: opportunities and challenges. *Dev. Cogn. Neurosci.* **36**, 100635 (2019).
126. Nguyen, J. P. et al. Whole-brain calcium imaging with cellular resolution in freely behaving *Caenorhabditis elegans*. *Proc. Natl Acad. Sci. USA* **113**, E1074–E1081 (2016).
127. Svoboda, K. & Li, N. Neural mechanisms of movement planning: motor cortex and beyond. *Curr. Opin. Neurobiol.* **49**, 33–41 (2018).
128. Seeber, M., Scherer, R., Wagner, J., Solís-Escalante, T. & Müller-Putz, G. R. High and low gamma EEG oscillations in central sensorimotor areas are conversely modulated during the human gait cycle. *NeuroImage* **112**, 318–326 (2015).
129. Wagner, J. et al. Level of participation in robotic-assisted treadmill walking modulates midline sensorimotor EEG rhythms in able-bodied subjects. *NeuroImage* **63**, 1203–1211 (2012).
130. McCrimmon, C. M. et al. Electroencephalographic encoding of human gait in the leg primary motor cortex. *Cereb. Cortex* **28**, 2752–2762 (2018).
131. Fischer, P. et al. Alternating modulation of subthalamic nucleus beta oscillations during stepping. *J. Neurosci.* **38**, 5111–5121 (2018).
132. Wagner, F. B. et al. Targeted neurotechnology restores walking in humans with spinal cord injury. *Nature* **563**, 65–71 (2018).
133. Yokoyama, H. et al. Gait-phase-dependent and gait-phase-independent cortical activity across multiple regions involved in voluntary gait modifications in humans. *Eur. J. Neurosci.* **54**, 8092–8105 (2021).
134. Thenaisie, Y. et al. Principles of gait encoding in the subthalamic nucleus of people with Parkinson's disease. *Sci. Transl. Med.* **14**, eab1800 (2022).
135. Holtzer, R., Epstein, N., Mahoney, J. R., Izzetoglu, M. & Blumen, H. M. Neuroimaging of mobility in aging: a targeted review. *J. Gerontol. Ser. A* **69**, 1375–1388 (2014).
136. Peterson, D. S. & Horak, F. B. Neural control of walking in people with Parkinsonism. *Physiology* **31**, 95–107 (2016).
137. Mustile, M. et al. Mobile EEG reveals functionally dissociable dynamic processes supporting real-world ambulatory obstacle avoidance: evidence for early proactive control. *Eur. J. Neurosci.* **54**, 8106–8119 (2021).
138. Meng, J. et al. Noninvasive electroencephalogram based control of a robotic arm for reach and grasp tasks. *Sci. Rep.* **6**, 38565 (2016).
139. Barnstaple, R., Protzak, J., DeSouza, J. F. X. & Gramann, K. Mobile brain/body imaging in dance: a dynamic transdisciplinary field for applied research. *Eur. J. Neurosci.* **54**, 8355–8363 (2021).
140. Reiser, J. E., Wascher, E. & Arnau, S. Recording mobile EEG in an outdoor environment reveals cognitive-motor interference dependent on movement complexity. *Sci. Rep.* **9**, 13086 (2019).
141. Protzak, J. & Gramann, K. EEG beta-modulations reflect age-specific motor resource allocation during dual-task walking. *Sci. Rep.* **11**, 16110 (2021).
142. De Sanctis, P., Butler, J. S., Malcolm, B. R. & Foxe, J. J. Recalibration of inhibitory control systems during walking-related dual-task interference: a mobile brain-body imaging (MOBI) study. *NeuroImage* **94**, 55–64 (2014).
143. Peterson, S. M. & Ferris, D. P. Differentiation in theta and beta electrocortical activity between visual and physical perturbations to walking and standing balance. *eNeuro* **5**, ENEURO.0207-18.2018 (2018).
144. Wagner, J., Makeig, S., Gola, M., Neuper, C. & Müller-Putz, G. Distinct β band oscillatory networks subserving motor and cognitive control during gait adaptation. *J. Neurosci.* **36**, 2212–2226 (2016).
145. Gilron, R. et al. Long-term wireless streaming of neural recordings for circuit discovery and adaptive stimulation in individuals with Parkinson's disease. *Nat. Biotechnol.* **39**, 1078–1085 (2021).
146. Ansó, J. et al. Concurrent stimulation and sensing in bi-directional brain interfaces: a multi-site translational experience. *J. Neural Eng.* **19**, 026025 (2022).
147. Johnson, V. et al. Embedded adaptive deep brain stimulation for cervical dystonia controlled by motor cortex theta oscillations. *Exp. Neurol.* **345**, 113825 (2021).
148. Louie, K. H. et al. Cortico-subthalamic field potentials support classification of the natural gait cycle in Parkinson's disease and reveal individualized spectral signatures. *eNeuro* **9**, ENEURO.0325-22.2022 (2022).
149. Cagnan, H. et al. Stimulating at the right time: phase-specific deep brain stimulation. *Brain* **140**, 132–145 (2017).
150. Morinan, G. et al. Computer-vision based method for quantifying rising from chair in Parkinson's disease patients. *Intell. Based Med.* **6**, 100046 (2022).
151. Fox, E. Perspectives from affective science on understanding the nature of emotion. *Brain Neurosci. Adv.* **2**, 2398212818812628 (2018).
152. Pessoa, L. On the relationship between emotion and cognition. *Nat. Rev. Neurosci.* **9**, 148–158 (2008).
153. Shamay-Tsoory, S. G. & Mendelsohn, A. Real-Life neuroscience: an ecological approach to brain and behavior research. *Perspect. Psychol. Sci.* **14**, 841–859 (2019).
154. Barrett, L. F. The theory of constructed emotion: an active inference account of interoception and categorization. *Soc. Cogn. Affect. Neurosci.* **12**, 1–23 (2017).
155. Bhanot, S. P., Chang, D., Lee Cunningham, J. & Ranson, M. Emotions and decisions in the real world: what can we learn from quasi-field experiments? *PLoS ONE* **15**, e0243044 (2020).
156. Mavros, P., Austwick, M. Z. & Smith, A. H. Geo-EEG: towards the use of EEG in the study of urban behaviour. *Appl. Spat. Anal.* **9**, 191–212 (2016).
157. Aspinall, P., Mavros, P., Coyne, R. & Roe, J. The urban brain: analysing outdoor physical activity with mobile EEG. *Br. J. Sports Med.* **49**, 272–276 (2015).
158. Mavros, P., Wälti, M. J., Nazemi, M., Ong, C. H. & Hölscher, C. A mobile EEG study on the psychophysiological effects of walking and crowding in indoor and outdoor urban environments. *Sci. Rep.* **12**, 18476 (2022).
159. Neale, C. et al. The impact of walking in different urban environments on brain activity in older people. *Cities Health* **4**, 94–106 (2020).
160. Lin, W. et al. Sitting or walking? Analyzing the neural emotional indicators of urban green space behavior with mobile EEG. *J. Urban. Health* **97**, 191–203 (2020).
161. Suhaimi, N. S., Mountstephens, J. & Teo, J. EEG-Based emotion recognition: a state-of-the-art review of current trends and opportunities. *Comput. Intell. Neurosci.* **2020**, e8875426 (2020).
162. Voineskos, D., Daskalakis, Z. J. & Blumberger, D. M. Management of treatment-resistant depression: challenges and strategies. *Neuropsychiatr. Dis. Treat.* **16**, 221–234 (2020).
163. Figue, M. et al. Deep brain stimulation for depression. *Neurotherapeutics* **19**, 1229–1245 (2022).
164. Miller, C. T. et al. Natural behavior is the language of the brain. *Curr. Biol.* **32**, R482–R493 (2022).
165. Harcastle, K., Ganguli, S. & Giocomo, L. M. Environmental boundaries as an error correction mechanism for grid cells. *Neuron* **86**, 827–839 (2015).
166. Ledergerber, D. et al. Task-dependent mixed selectivity in the subiculum. *Cell Rep.* **35**, 109175 (2021).
167. Yu, Z. et al. Beyond t test and ANOVA: applications of mixed-effects models for more rigorous statistical analysis in neuroscience research. *Neuron* **110**, 21–35 (2022).
168. Bonnefon, J.-F., Hopfensitz, A. & De Neys, W. Can we detect cooperators by looking at their face? *Curr. Dir. Psychol. Sci.* **26**, 276–281 (2017).
169. Javadi, A.-H. et al. Hippocampal and prefrontal processing of network topology to simulate the future. *Nat. Commun.* **8**, 14652 (2017).
170. Antony, J. W. et al. Behavioral, physiological, and neural signatures of surprise during naturalistic sports viewing. *Neuron* **109**, 377–390 (2021).
171. Topalovic, U. et al. A wearable platform for closed-loop stimulation and recording of single-neuron and local field potential activity in freely moving humans. *Nat. Neurosci.* **26**, 517–527 (2023).
172. Geller, E. B. et al. Brain-responsive neurostimulation in patients with medically intractable mesial temporal lobe epilepsy. *Epilepsia* **58**, 994–1004 (2017).
173. Ma, B. B. & Rao, V. R. Responsive neurostimulation: candidates and considerations. *Epilepsy Behav.* **88**, 388–395 (2018).
174. Gelinás, J. N., Khodagholy, D., Thesen, T., Devinsky, O. & Buzsáki, G. Interictal epileptiform discharges induce hippocampal-cortical coupling in temporal lobe epilepsy. *Nat. Med.* **22**, 641–648 (2016).
175. Spiers, H. J. Brain rhythms that help us to detect borders. *Nature* **589**, 353–354 (2021).

Acknowledgements

This work was supported by the National Institute of Neurological Disorders and Stroke (NINDS) and the National Institute of Mental Health (NIMH) of the National Institutes of Health (NIH) under award numbers R01MH124761 and UO1NS103780 (to N.S.), K99NS126715 (to M.S.) and F30MH125534 (to S.L.M.). The content is solely the responsibility of the authors and does not necessarily represent the official views of the National Institutes of Health. N.S. was also supported by the McKnight Foundation (Technological Innovations in Neuroscience Award) and the Keck Foundation (UCLA DGSOM Junior Faculty Award). The authors thank Leonardo Christov-Moore and Martin Seeber for helpful feedback on the manuscript, and Tyler Wishard, Leonardo Christov-Moore, Jason Whisman and Emi Jenkens-Drake for contributing to the design and creation of figure illustrations. Lastly, the authors also thank all members of the Suthana Lab for helpful discussions and particularly Sonja Hiller for additional general assistance.

Author contributions

The authors contributed equally to all aspects of the article.

Competing interests

The authors declare no competing interests.

Additional information

Peer review information *Nature Reviews Neuroscience* thanks A. Clarke, H. Spiers and the other, anonymous, reviewer(s) for their contribution to the peer review of this work.

Publisher's note Springer Nature remains neutral with regard to jurisdictional claims in published maps and institutional affiliations.

Related links

Mo-DBRS platform: <https://github.com/suthanalab/Mo-DBRS>

Open Mind Consortium: <https://openmind-consortium.github.io/>

This is a U.S. Government work and not under copyright protection in the US; foreign copyright protection may apply 2023