

Curvularia alcornii Aortic Pseudoaneurysm Following Aortic Valve Replacement: Case Report and Review of the Literature

Shanti Narayanasamy,¹ Adam R. Williams,² Wiley A. Schell,¹ Rebekah W. Moehring,¹ Barbara D. Alexander,¹ Thuy Le,¹ Ramesh A. Bharadwaj,³ Michelle McGavran,⁴ Jacob N. Schroder,² and John R. Perfect¹

¹Division of Infectious Diseases, Department of Medicine, Duke University Hospital, Durham, North Carolina, USA, ²Division of Cardiovascular and Thoracic Surgery, Duke University Hospital, Durham, North Carolina, USA, ³McLeod Health Infectious Diseases, McLeod Health, Florence, South Carolina, USA, and ⁴Division of Cardiothoracics, Department of Anesthesiology, Duke University Hospital, Durham, North Carolina, USA

We report the first case of *Curvularia alcornii* aortic pseudoaneurysm following bioprosthetic aortic valve replacement in an immunocompetent host. Infection was complicated by septic emboli to multiple organs. Despite aggressive surgical intervention and antifungal therapy, infection progressed. We review the literature on invasive *Curvularia* infection to inform diagnosis and management.

Keywords. aortic pseudoaneurysm; aortic valve; *Curvularia alcornii*; mycotic aneurysm.

Curvularia species are dematiaceous, saprophytic molds found ubiquitously in soil, which rarely cause disease in animals and humans [1]. The earliest report of phaeohyphomycosis due to *Curvularia* was a patient with black-grain mycetoma in Senegal in 1959 [2]. The clinical spectrum of *Curvularia* infections in humans is broad, ranging from allergic bronchopulmonary disease and localized infections involving the skin, eyes, and sinuses, to invasive infections including brain abscess, endocarditis, and peritonitis [3–5]. We report the first case of *Curvularia alcornii* aortic pseudoaneurysm following aortic valve replacement in an immunocompetent host. As *Curvularia* endocarditis is rare, we review the literature of invasive *Curvularia* infections to inform diagnosis and management.

Received 27 July 2021; editorial decision 11 October 2021; accepted 28 October 2021; published online 3 November 2021.

Correspondence: Shanti Narayanasamy, MBBS, FRACP, Division of Infectious Diseases, Department of Medicine, Duke University Hospital, 315 Trent Drive, Hanes House, Durham, NC 27710, USA (shanti.narayanasamy@duke.edu).

Open Forum Infectious Diseases® 2021

© The Author(s) 2021. Published by Oxford University Press on behalf of Infectious Diseases Society of America. This is an Open Access article distributed under the terms of the Creative Commons Attribution-NonCommercial-NoDerivs licence (<https://creativecommons.org/licenses/by-nc-nd/4.0/>), which permits non-commercial reproduction and distribution of the work, in any medium, provided the original work is not altered or transformed in any way, and that the work is properly cited. For commercial re-use, please contact journals.permissions@oup.com <https://doi.org/10.1093/ofid/ofab536>

CASE REPORT

A 53-year-old man with hypertension and hypercholesterolemia underwent bioprosthetic aortic valve replacement for bicuspid aortic valve (Figure 1). The procedure was uncomplicated. Six months later, he presented to his local hospital with acute abdominal pain and lower extremity pain and weakness. He reported a 4-month history of right neck pain, and a 2-month history of low-grade fevers, sweats, malaise, and dysphagia. He was born in Mexico and had migrated to the United States 14 years prior. He lived in an urban area of South Carolina and worked as a landscaper.

On admission examination, he was febrile, with bilateral cold lower extremities and absent femoral pulses. Chest radiograph (Figure 2A) and computed tomography (CT) angiogram demonstrated a large, multilobar, 8 cm × 7.6 cm ascending aortic pseudoaneurysm causing mass effect on the left atrium and superior vena cava (Figure 2B). He had multiple embolic occlusions of the aorta, renal arteries, superior mesenteric artery, hepatic artery, and splenic artery (Figure 2C). Transthoracic echocardiography showed a large ascending aortic pseudoaneurysm and a well-seated prosthetic aortic valve with no perivalvular regurgitation. He was commenced on intravenous vancomycin and cefepime.

Due to limb ischemia, he underwent emergency laparotomy for surgical thrombectomies of the superior mesenteric and aortoiliac arteries and bilateral lower limb fasciotomies. On day 6 following the operation, he transferred to Duke University Hospital for further management while critically ill on mechanical ventilation, vasopressors, and renal replacement therapy. Magnetic resonance imaging of the brain showed multiple supra and infratentorial acute infarcts, and intraparenchymal and subarachnoid hemorrhages (Figure 2D). Histopathology from the previously excised thrombus showed extensive infiltrates with pigmented septate fungal hyphae (Figure 2E), and Fontana-Masson stain demonstrated melanin in the fungal cell wall (Figure 2F). Antibacterials were stopped; instead, we started broad-spectrum antifungal therapy: liposomal amphotericin B (L-AmB) 5 mg/kg once daily, intravenous voriconazole (loading dose of 6 mg/kg then 4 mg/kg every 12 hours), and intravenous micafungin 150 mg daily.

Bacterial and fungal blood cultures remained negative after 5 days of incubation, so we used a Karius test (Karius, Redwood City, California), a metagenomic next-generation sequencing test designed to detect circulating microbial cell-free DNA in plasma [6]. No pathogen was detected above the statistical threshold. However, the assay did detect *Curvularia* species below the statistical threshold. Fungal culture of the aortic thrombus grew black colonies after 10 days' incubation.

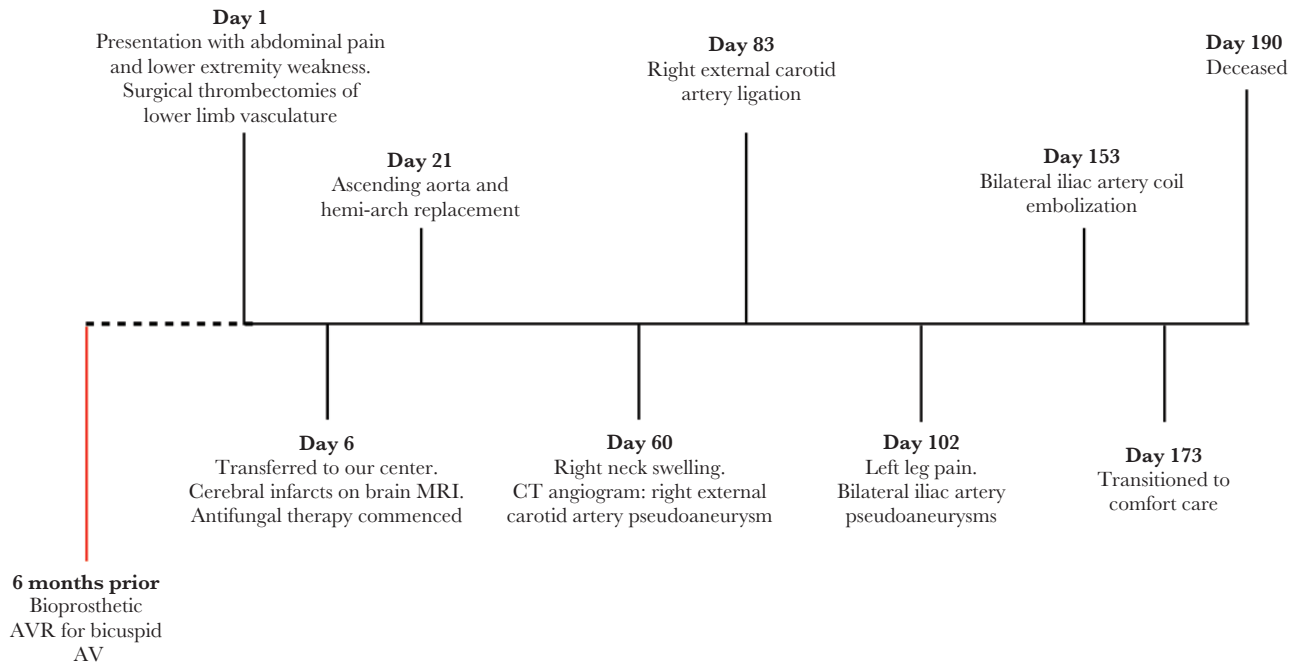


Figure 1. Timeline of the patient's clinical progress and major surgical interventions. Abbreviations: AV, aortic valve; AVR, aortic valve replacement; CT, computed tomography; MRI, magnetic resonance imaging.

Microscopically, the pathogen had brown, narrow-angle branching, septate hyphae with sympodial growth and brown multiseptate conidia (Figure 2G), consistent with *Curvularia* species. The nucleotide sequence of the isolate for internal transcribed spacer 1, partial sequence; 5.8S ribosomal RNA gene, complete sequence; and internal transcribed spacer 2, partial sequence (GenBank accession number MT658129) was determined by the Duke Mycology Research Laboratory using previously described methodology [7].

On day 21 he underwent an ascending aorta and hemi-arch replacement graft and biological Bentall aortic root and valve replacement. Intraoperative transesophageal echocardiography showed a large mycotic aneurysm (8.8 cm × 8 cm) (see video in the [Supplementary Materials](#)) and fungal balls within it (Figure 2H). Fungal cultures of the intraoperative tissue revealed *Curvularia alcornii*. The University of Texas Health Science Center at San Antonio Fungus Testing Laboratory performed standardized susceptibility tests [8] with the following minimum inhibitory concentrations: amphotericin B, 0.06 µg/mL; voriconazole, 0.25 µg/mL; fluconazole, 8 µg/mL; itraconazole, ≤0.03 µg/mL; ketoconazole, 0.125 µg/mL.

He recovered well from the operation. On day 60, he noted right neck swelling and increased pulsatility. CT angiogram of the neck showed a right external carotid artery pseudoaneurysm. He underwent open right external carotid artery ligation on day 83. Cultures of the carotid artery were not sent; however, histopathology demonstrated septate hyphae. He completed 12 weeks of L-AmB and 2 weeks of micafungin and transitioned to suppressive oral voriconazole.

Shortly after discharge to a rehabilitation facility on day 102, he developed progressive left leg pain. He was readmitted with persistent left leg pain, numbness, and fever. Voriconazole level on admission was 4.0 µg/mL. Blood cultures were negative. CT angiography demonstrated bilateral iliac artery pseudoaneurysms with associated thrombus and suspicion for abscesses. Open surgery was deemed too high risk, so he underwent bilateral iliac artery coil embolization. L-AmB and micafungin were restarted, and given refractory disease despite adequate levels, voriconazole was changed to posaconazole. Despite these interventions, he developed further arterial pseudoaneurysms and emboli with persistent fever. He transitioned to comfort care and died 5 months after initial presentation.

REVIEW OF THE LITERATURE

We performed an English-language literature review of invasive *Curvularia* infections between 1970 and June 2021. The PubMed database was searched for “*Curvularia*” in the title or abstract. Criteria for inclusion were (1) a clinical syndrome consistent with invasive infection and (2) microbiological recovery of *Curvularia* spp. Localized infections of the sinus, skin, or eye or catheter-associated infections were excluded, as were pediatric cases.

DISCUSSION

To our knowledge, this is the first report of a mycotic aortic aneurysm caused by *Curvularia alcornii* and only the third reported case of cardiac infection caused by *Curvularia* species

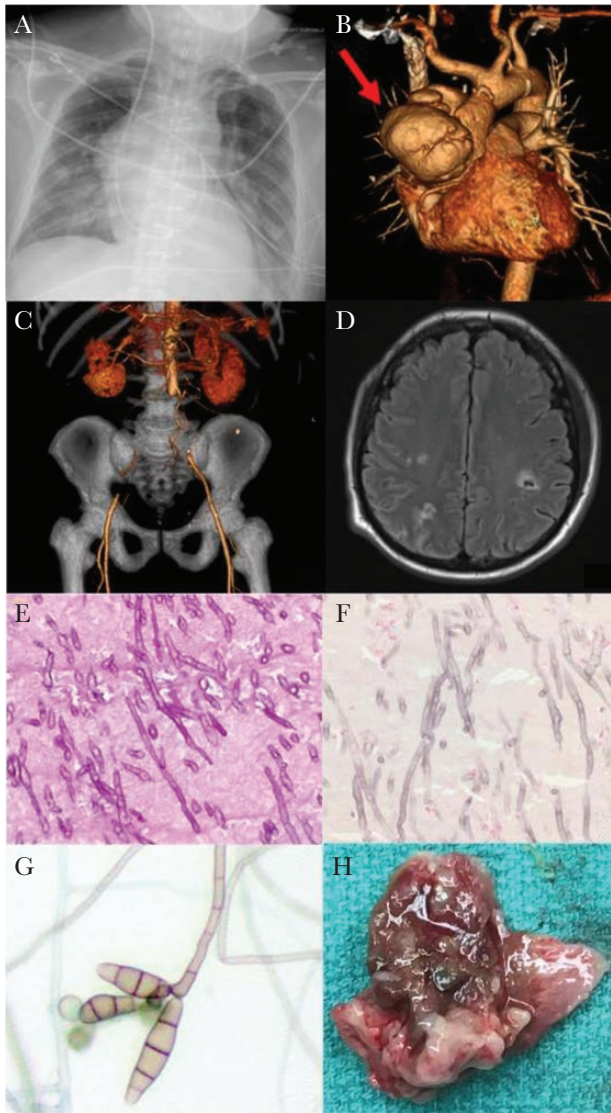


Figure 2. Radiographic, histopathological, and microbiological results. *A*, Anteroposterior erect chest radiograph on presentation demonstrating large aortic aneurysm. *B*, Computed tomography (CT) angiogram reformats on presentation: red arrow indicating ascending aortic aneurysm. *C*, CT angiogram reformats on presentation: coronal view, demonstrating absence of blood flow through bilateral iliac arteries. *D*, Magnetic resonance imaging of the head demonstrating septic cerebral emboli. *E*, Periodic acid-Schiff stain of the aortic thrombus, 400 \times , showing narrow, septate fungal hyphae with acute angle branching. *F*, Fontana-Masson stain, 400 \times , demonstrating melanin uptake in the fungal cell wall. *G*, Lactophenol cotton blue stain of the *Curvularia alcornii* recovered in culture. *H*, Macroscopic “fungal ball” from ascending aorta.

[9, 10]. All 3 cases were associated with aortic valve replacement and had several features in common: (1) aortic root involvement, (2) occurring within 6 months following aortic valve replacement, (3) did not originate from a cutaneous or sinopulmonary source, and (4) presented in an immunocompetent host.

Endocarditis due to phaeohyphomycosis is uncommon, accounting for just 13% (9/72) of invasive disease [4]. A 2002 review article on disseminated phaeohyphomycosis reported

just 7% (5/72) of infections caused by *Curvularia* species [4]. Twenty cases of invasive *Curvularia* infection have been described in the literature including the present case (Table 1). The majority (16/20 [80%]) of invasive *Curvularia* infections occurred in men, mirroring the male predominance of disseminated phaeohyphomycosis (41/72 [57%]). Most (11/20 [55%]) patients with invasive infection were immunocompromised or had preexisting sinopulmonary disease. Mortality of invasive *Curvularia* was 45% (9/20), compared to 79% (57/72) for disseminated phaeohyphomycosis.

The current case is strikingly similar to 2 previously reported cases of *Curvularia* endocarditis. Kaufman et al described a patient presenting 6 months after aortic homograft placement with mycotic aneurysms of the aorta and septic emboli to the spleen, kidneys, and brain [10]. Premortem and postmortem tissue isolated *Curvularia geniculata*. Bryan et al reported a case of *Curvularia lunata* prosthetic valve endocarditis and aortic mycotic aneurysm presenting 6 months after aortic valve replacement and 2 months of fevers, sweats, and lower back pain [9]. In all 3, the lack of a cutaneous or sinopulmonary portal of entry raises the possibility of periprocedural exposure.

Curvularia species have been cultured from the surfaces and air of clinical environments, including operating rooms [28, 29]. One study reported that 5.6% of molds isolated from surveillance culture plates placed throughout an intensive care unit (ICU) were identified as *Curvularia* species [29]. Reports of postoperative *Curvularia* infections suggest a healthcare environmental origin. A lung transplant recipient developed *Curvularia lunata* pleural and pericardial infection following a prolonged period with an open chest and multiple chest cavity explorations [7]. In this case, a black mold was seen growing inside the chest tubes. However, environmental sampling of the ICU did not reveal *Curvularia*. Levi and Basgoz described a lung transplant patient who developed *Curvularia* infection of the sternal wound extending to the lung parenchyma, pleural space, and pericardium [22]. Another report described a neonatal sternal wound infection with *Curvularia lunata* following cardiac surgery for congenital heart disease complicated by cardiac tamponade and delayed chest closure [30]. In all 3 cases, the infection was fatal.

In 2000, investigators reported an outbreak of 5 *Curvularia* infections associated with breast implant surgery [31]. *Curvularia* was found in 2 environmental sources: saline bottles stored in a supply room with a water-damaged ceiling and the corridor outside an operating room. The postulated mechanisms of contamination of the surgical site were via spores on the saline bottles or saline in open bowls during the procedure.

Our patient’s case and the evidence reviewed here suggest that environmental contamination at the time of valve surgery may have been the source of *Curvularia* infection. An investigation for a possible environmental exposure was not conducted at our institution, as the original surgery took place elsewhere.

Table 1. Cases of Invasive *Curvularia* Species Infection Reported in the Adult Literature (1970–June 2021)

Reference	<i>Curvularia</i> Species	Patient Characteristics					Presumed Source	Site(s) of Disease	Therapy	Alive at Publication (Yes/No)
		Age (y)/Sex	Risk Factor(s) for Invasive Infection	None	Lung transplant	Prosthetic material				
Current case	<i>C alcornii</i>	53/M	None	Prosthetic material	PVE, aortic root, brain, spleen, kidneys, iliac arteries	Amb, vori, mica, posa, surgery	No			
Rofle et al, US, 2020 [7]	<i>C lunata</i>	67/M	Lung transplant	Prosthetic material	Lungs, pleural space	Amb, surgery	No			
Djenontin et al, Mali, 2020 [11]	<i>C sp</i>	44/F	None	Traumatic inoculation following road accident	Native knee septic arthritis	Amb, posa, surgery	No			
Gonzales Zamora et al, US, 2019 [12]	<i>Curvularia</i> sp	42/F	Heart, kidney transplant	Sino-pulmonary	Brain	Amb, vori	No			
Vasikasin et al, 2019, Thailand [13]	<i>C tuberculata</i>	22/M	None	Cutaneous	Skin, lungs	Amb	Yes			
Shrivastava et al, 2017, India [14]	<i>C lunata</i>	48/M	None	Cutaneous	Epidural space	Amb, vori, surgery	Yes			
Skovrlj et al, 2014, US [15]	<i>Curvularia</i> sp	33/M	Marijuana use	Sino-pulmonary	Brainstem	Amb, 5-FC, vori, surgery	Yes			
Gongidi et al, 2013, US [16]	<i>Curvularia</i> sp	37/M	Steroids, marijuana use	Sino-pulmonary	Brain	“IV antifungals,” surgery	Yes			
Gagdi et al, 2013, US [17]	<i>Curvularia</i> sp	50/F	Sinus surgery	Sino-pulmonary	Brain	Vori, surgery	Yes			
Gagdi et al, 2013, US [18]	<i>C geniculata</i>	35/M	Plasma cell dyscrasia	Unknown	Brain	Amb, vori, surgery	No			
Singh et al, 2008 [18]; Australia [19]	<i>C lunata</i>	57/M	None	Sino-pulmonary	Sinus, brain	Amb, vori, surgery	Yes			
Carter et al, 2004, US [20]	<i>C lunata</i>	21/M	Marijuana use	Unknown	Brain	Amb, 5-FC	No			
Tessari et al, 2003, Italy [21]	<i>C lunata</i>	68/M	Heart transplant	Cutaneous	Skin, lungs, GI tract	Amb	No			
Levi & Basgoz, 2000, US [22]	<i>Curvularia</i> sp	56/M	Lung transplant	Prosthetic material	Lung, pleura, pericardium, sternal wound, thyroid	Amb, itra, 5-FC	No			
Ebright et al, 1999, US [23]	<i>C clavata</i>	46/F	Chronic sinusitis	Sino-pulmonary	Brain	Amb, itra, surgery	Yes			
Bryan et al, 1993, US [9]	<i>C lunata</i>	44/M	None	Unknown	PVE, aortic root	Amb, ket, terb, surgery	Yes			
Pierce et al, 1986, US [24]; de la Monte & Hutchins, 1985, US [25]	<i>C lunata</i>	42/M	T-cell deficiency	Unknown	Lung, brain	Amb, ket, mico, surgery	Yes			
Rohwedder et al, 1979, US [26]	<i>C lunata</i>	25/M	None	Cutaneous	Lung, lymph node, skin, muscle, brain, spine	Amb, mico, surgery	Yes			
Harris & Downham, 1978, US [27]	<i>Curvularia</i> sp	27/M	None	Cutaneous	Lung, spine	Amb, 5-FC, mico	Yes			
Kaufman, 1971, US [10]	<i>C geniculata</i>	41/M	None	Unknown	Aortic homograft, brain, spleen, kidney, thyroid	Surgery	No			

Abbreviations: 5-FC, flucytosine; Amb, amphotericin B; F, female; GI, gastrointestinal; itra, itraconazole; IV, intravenous; ket, ketoconazole; M, male; mica, miconazole; mico, miconazole; posa, posaconazole; PVE, prosthetic valve endocarditis; terb, terbinafine; US, United States; vori, voriconazole.

His unfortunate outcome, despite maximal medical and surgical treatment, serves as reminder of the high mortality associated with invasive disease. Clinicians should be aware of this late-occurring deep surgical site infection, and such cases should be investigated for origins within healthcare facilities.

Supplementary Data

Supplementary materials are available at *Open Forum Infectious Diseases* online. Consisting of data provided by the authors to benefit the reader, the posted materials are not copyedited and are the sole responsibility of the authors, so questions or comments should be addressed to the corresponding author.

Notes

Acknowledgments. The authors acknowledge Dr William La Via, Medical Director of Karius, for his assistance with the Karius Test and its interpretation in the clinical setting.

Patient consent statement. Every effort was made to contact the family of the patient, but unfortunately, we were unable to make contact to obtain consent. Both the patient's wife and daughter had contact details at both hospitals where the patient was hospitalized. Two authors (S. N. and R. A. B.) called both numbers on different occasions (various dates and times of day) and left messages on voicemail to contact us regarding publication of the case report. We called repeatedly and sent text messages, but were unable to make contact. Ample time (2 weeks) was given for a response. All clinical information and images have been anonymized sufficiently to protect the patient's privacy and identity. This research did not require ethical review board approval.

Potential conflicts of interest. All authors: No reported conflicts of interest.

All authors have submitted the ICMJE Form for Disclosure of Potential Conflicts of Interest. Conflicts that the editors consider relevant to the content of the manuscript have been disclosed.

References

1. Bridges CH. Maduromycotic mycetomas in animals; *Curvularia geniculata* as an etiologic agent. *Am J Pathol* **1957**; 33:411–27.
2. Baylet J, Camain R, Segretain G. Identification of the agents of maduromycoses of Senegal and Mauritania. Description of a new species [in French]. *Bull Soc Pathol Exot Filiales* **1959**; 52:448–77.
3. Pimentel JD, Mahadevan K, Woodgyer A, et al. Peritonitis due to *Curvularia inaequalis* in an elderly patient undergoing peritoneal dialysis and a review of six cases of peritonitis associated with other *Curvularia* spp. *J Clin Microbiol* **2005**; 43:4288–92.
4. Revankar SG, Patterson JE, Sutton DA, et al. Disseminated phaeohiphomycosis: review of an emerging mycosis. *Clin Infect Dis* **2002**; 34:467–76.
5. Rinaldi MG, Phillips P, Schwartz JG, et al. Human *Curvularia* infections. Report of five cases and review of the literature. *Diagn Microbiol Infect Dis* **1987**; 6:27–39.
6. Blauwkamp TA, Thair S, Rosen MJ, et al. Analytical and clinical validation of a microbial cell-free DNA sequencing test for infectious disease. *Nat Microbiol* **2019**; 4:663–74.

7. Rolfe R Jr, Schell WA, Smith B, et al. Black mold takes hold and story told. *Med Mycol Case Rep* **2020**; 29:12–4.
8. Clinical and Laboratory Standards Institute. Reference Method for Broth Dilution Antifungal Susceptibility Testing of Filamentous Fungi. 3rd ed. Wayne, PA: CLSI; **2017**.
9. Bryan CS, Smith CW, Berg DE, Karp RB. *Curvularia lunata* endocarditis treated with terbinafine: case report. *Clin Infect Dis* **1993**; 16:30–2.
10. Kaufman SM. *Curvularia* endocarditis following cardiac surgery. *Am J Clin Pathol* **1971**; 56:466–70.
11. Djenontin E, Lebeau D, Acikgoz H, et al. Post-traumatic *Curvularia* sp. arthritis in an immunocompetent adult. *J Mycol Med* **2020**; 30:100967.
12. Gonzales Zamora JA, Varadarajulu Y. Fatal *Curvularia* brain abscess in a heart and kidney transplant recipient. *IDCases* **2019**; 17:e00576.
13. Vasikasin V, Nasomsong W, Srisuttiyakorn C, et al. Disseminated phaeohiphomycosis caused by *Curvularia tuberculata* in a previously healthy man. *Mycopathologia* **2019**; 184:321–5.
14. Shrivastava A, Tadeballi K, Goel G, et al. Melanized fungus as an epidural abscess: a diagnostic and therapeutic challenge. *Med Mycol Case Rep* **2017**; 16:20–4.
15. Skovrlj B, Haghghi M, Smethurst ME, et al. *Curvularia* abscess of the brainstem. *World Neurosurg* **2014**; 82:241.e249–13.
16. Gongidi P, Sarkar D, Behling E, Brody J. Cerebral phaeohiphomycosis in a patient with neurosarcoidosis on chronic steroid therapy secondary to recreational marijuana usage. *Case Rep Radiol* **2013**; 2013:191375.
17. Gadgil N, Kupferman M, Smitherman S, et al. *Curvularia* brain abscess. *J Clin Neurosci* **2013**; 20:173–5.
18. Singh H, Irwin S, Falowski S, et al. *Curvularia* fungi presenting as a large cranial base meningioma: case report. *Neurosurgery* **2008**; 63:E177; discussion E177.
19. Smith T, Goldschlager T, Mott N, et al. Optic atrophy due to *Curvularia lunata* mucocoele. *Pituitary* **2007**; 10:295–7.
20. Carter E, Boudreaux C. Fatal cerebral phaeohiphomycosis due to *Curvularia lunata* in an immunocompetent patient. *J Clin Microbiol* **2004**; 42:5419–23.
21. Tessari G, Forni A, Ferretto R, et al. Lethal systemic dissemination from a cutaneous infection due to *Curvularia lunata* in a heart transplant recipient. *J Eur Acad Dermatol Venereol* **2003**; 17:440–2.
22. Levi M, Basgoz N. Fungal wound infection in a lung transplant recipient. *Transpl Infect Dis* **2000**; 2:36–43.
23. Ebright JR, Chandrasekar PH, Marks S, et al. Invasive sinusitis and cerebritis due to *Curvularia clavata* in an immunocompetent adult. *Clin Infect Dis* **1999**; 28:687–9.
24. Pierce NF, Millan JC, Bender BS, Curtis JL. Disseminated *Curvularia* infection. *Arch Pathol Lab Med* **1986**; 110:871.
25. de la Monte SM, Hutchins GM. Disseminated *Curvularia* infection. *Arch Pathol Lab Med* **1985**; 109:872–4.
26. Rohwedder JJ, Simmons JL, Colfer H, Gatmaitan B. Disseminated *Curvularia lunata* infection in a football player. *Arch Intern Med* **1979**; 139:940–1.
27. Harris JJ, Downham TF Jr. Unusual fungal infections associated with immunologic hyporeactivity. *Int J Dermatol* **1978**; 17:323–30.
28. Eslami A, Karimi F, Karimi Z, Rajabi Z. A survey of the quantity and type of biological aerosols in selected wards of a teaching hospital in Ghazvin. *Electron Physician* **2016**; 8:2281–5.
29. Gonçalves CL, Mota FV, Ferreira GF, et al. Airborne fungi in an intensive care unit. *Braz J Biol* **2018**; 78:265–70.
30. Yau YC, de Nanassy J, Summerbell RC, et al. Fungal sternal wound infection due to *Curvularia lunata* in a neonate with congenital heart disease: case report and review. *Clin Infect Dis* **1994**; 19:735–40.
31. Kainer MA, Keshavarz H, Jensen BJ, et al. Saline-filled breast implant contamination with *Curvularia* species among women who underwent cosmetic breast augmentation. *J Infect Dis* **2005**; 192:170–7.