

**CME CREDIT** **EDUCATIONAL OBJECTIVE:** Readers will recognize the early signs and symptoms of pulmonary insufficiency in adult patients with tetralogy of Fallot

**DAVID FOX, ME, PA-C**

Department of Cardiovascular  
Medicine, Section of Clinical Cardiology,  
Cleveland Clinic

**GANESH P. DEVENDRA, BA**

Cleveland Clinic Lerner College of  
Medicine of Case Western Reserve  
University, Education Institute,  
Cleveland Clinic

**STEPHEN A. HART, BS**

Cleveland Clinic Lerner College of  
Medicine of Case Western Reserve  
University, Education Institute,  
Cleveland Clinic

**RICHARD A. KRASUSKI, MD**

Department of Cardiovascular Medicine,  
Section of Clinical Cardiology, Cleveland  
Clinic

# When ‘blue babies’ grow up: What you need to know about tetralogy of Fallot

## ABSTRACT

Most babies born with tetralogy of Fallot undergo corrective surgery and survive to adulthood. However, as they get older they are prone to a number of long-term problems, and they often do not receive expert-level follow-up care. This review of the adult complications of tetralogy of Fallot should help primary care practitioners identify these patients, make appropriate and timely referrals, and educate patients and their families.

## KEY POINTS

The major long-term complication of tetralogy of Fallot repair is pulmonary valve insufficiency, which leads to right heart failure. Other problems include atrial and ventricular arrhythmias and sudden cardiac death.

Surgical pulmonary valve replacement is the standard of care, but the optimal time to do this is unclear.

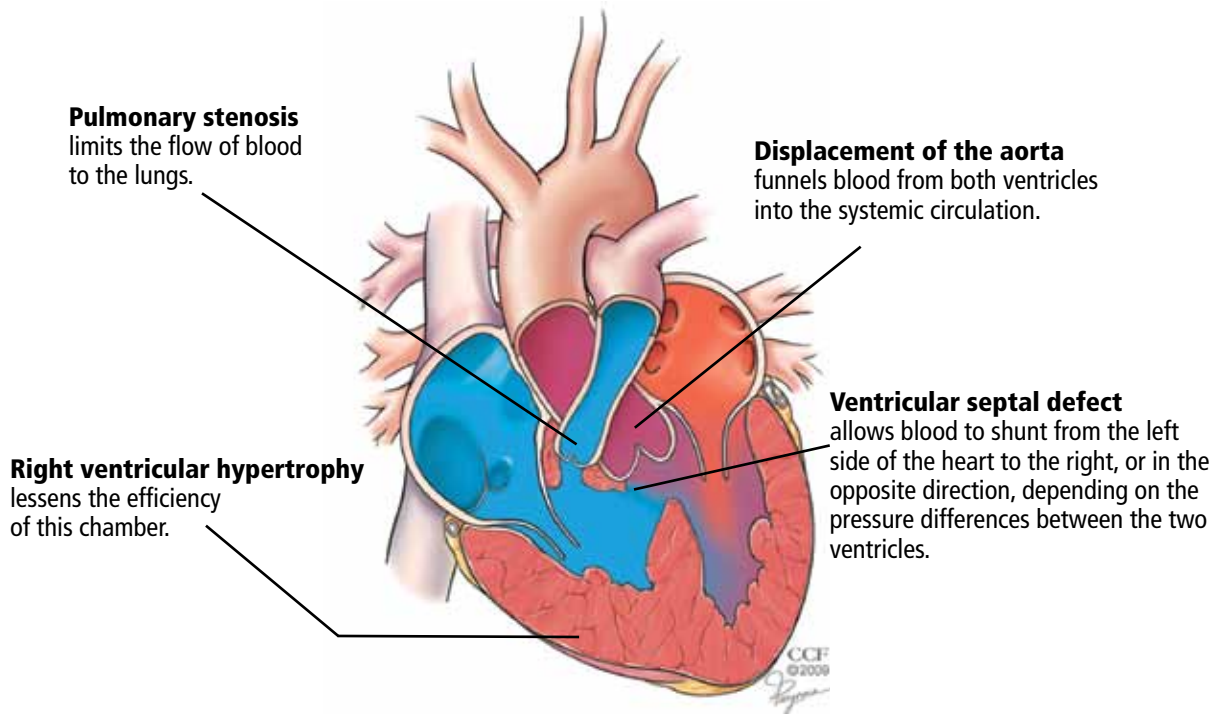
Novel and experimental therapies include percutaneous pulmonary valve replacement and medical therapy with pulmonary arterial vasodilators.

**C**HILDREN BORN with tetralogy of Fallot and other congenital heart defects are living longer—long enough for new problems to arise, and, eventually, to present to your clinic. In primary care, the presentation of tetralogy of Fallot is still rare, but it is becoming more common.

Congenital heart disease was once solely a pediatric specialty, but adults who have been treated for these conditions now outnumber children with congenital heart conditions.<sup>1-4</sup> More than 85% of infants with congenital heart disease are now expected to reach adulthood.<sup>5,6</sup> For those with tetralogy of Fallot, the most common form of cyanotic congenital heart disease, the 40-year survival rate is now at least 90%.<sup>5</sup>

But these former “blue babies” eventually have serious problems. Most develop pulmonary valve insufficiency (regurgitation), which, over time, can result in right ventricular volume overload, enlargement, and dysfunction.<sup>7-10</sup> These problems lead to arrhythmias, the most significant cause of illness and death in these patients.<sup>11-13</sup> Ventricular and atrial arrhythmias occur in up to 35% of patients with tetralogy of Fallot, and over a follow-up period of up to 30 years the incidence of sudden cardiac death is 6%.<sup>14</sup>

Furthermore, because many patients have no symptoms in early adulthood, they are often lost to follow-up, potentially missing the opportunity to have complications treated before they become irreversible. Recent data suggest that most patients who present with symptoms had stopped seeing a cardiologist about 10 years before.<sup>15</sup>



**FIGURE 1.** The defects found in tetralogy of Fallot cause poor oxygenation. Although surgical repair has excellent outcomes, patients are prone to develop pulmonary insufficiency years later.

### The optimal timing of pulmonary valve replacement remains debated

The challenge for primary care clinicians is to identify these patients in their practice, to recognize the early signs and symptoms of a worsening condition, and to refer and treat before cardiac damage becomes irreversible.

#### ■ ONE IN 3,600 LIVE BIRTHS

Tetralogy of Fallot occurs in approximately 1 in 3,600 live births or 3.5% of infants born with congenital heart disease.<sup>6</sup> It is the most common type of cyanotic congenital heart disease, accounting for 10% of all cases.<sup>16</sup> Patients in whom it has been repaired are the biggest group of adults with complex congenital heart disease. At Cleveland Clinic, it is the reason for 23% of new referrals to our adult congenital cardiology clinic, second only to atrial septal defects (33%).

#### ■ FOUR DISTINCT FEATURES

Tetralogy of Fallot has four distinct anatomic features (FIGURE 1):

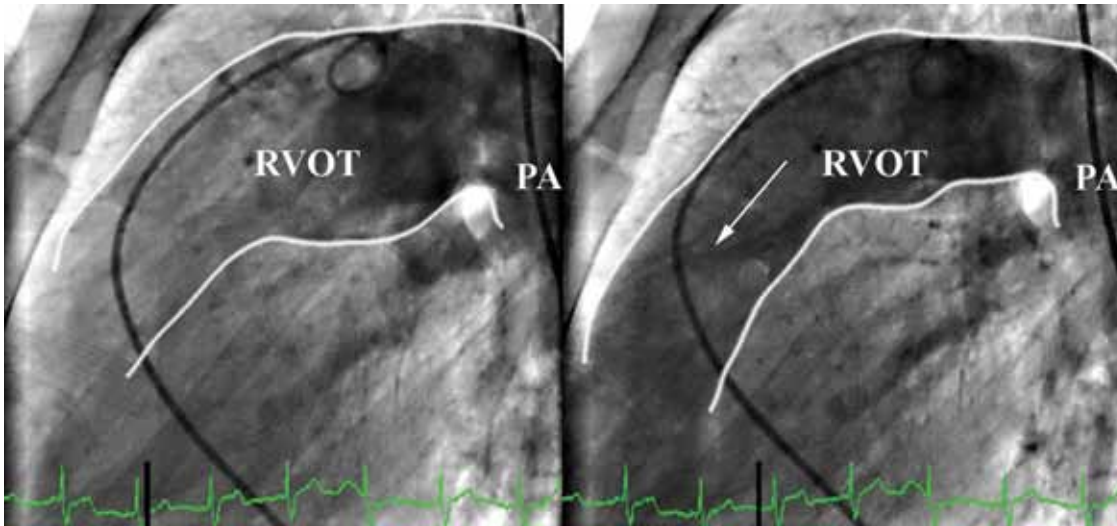
- Pulmonary stenosis (subvalvar, valvar, or both subvalvar and valvar)

- Ventricular septal defect
- Hypertrophy of the right ventricle
- Rightward deviation of the aortic valve, so that it overrides the ventricular septum; this can range from minimal overriding of the aorta and trivial pulmonary stenosis to up to 90% override and frank pulmonary atresia.

The aorta, receiving blood from both ventricles, is usually dilated. It arises from a right-sided arch in about 25% of patients and may override the septum so much that more than 50% of the blood flow comes from the right ventricle.<sup>17</sup> In such cases, whether the patient has true tetralogy of Fallot or a double-outlet right ventricle with pulmonic stenosis may be ambiguous. Though controversial, the latter condition is generally distinguished by a ventricular septal defect that is integral to the left ventricular outflow tract and by lack of fibrous continuity between the aortic and mitral valves.<sup>18</sup>

#### ■ SURGERY HAS EVOLVED

Surgical repair has been performed since the 1950s, and the perioperative death rate has



**FIGURE 2.** Severe pulmonary insufficiency after repair of tetralogy of Fallot. **Left,** contrast injected into the pulmonary artery (PA) during systole. **Right,** leaking of contrast (arrow) back into the right ventricular outflow tract (RVOT) during diastole.

fallen to less than 1% at most experienced centers.<sup>19</sup>

In the past, surgeons often placed a shunt between a systemic artery and the pulmonary artery as a palliative measure to improve oxygenation in infants with tetralogy of Fallot, waiting until the child was older to remove the shunt and repair the defects definitively.

Now, however, they generally favor repairing the heart in the initial procedure. This involves patching the ventricular septal defect, widening the infundibulum, and repairing the pulmonary valve or patching the annulus. Transannular patching opens the entire right ventricular outflow tract, but it crosses the pulmonary valve, and this is what eventually results in severe pulmonary insufficiency and its complications.<sup>20</sup> For this reason, surgeons at most institutions now favor valve-sparing procedures rather than transannular patching, whenever possible.

#### ■ WHAT HAPPENS YEARS AFTER SURGICAL REPAIR?

Surgery used to be considered the definitive cure for tetralogy of Fallot. However, problems that arise years later include chronic pulmonary valve insufficiency, obstruction of the right ventricular outflow tract, depressed right ventricular function, residual ventricu-

lar septal defect leaks, and arrhythmias.<sup>17,21,22</sup> For these reasons, many experts have abandoned the notion that surgical repair is definitive.<sup>23,24</sup>

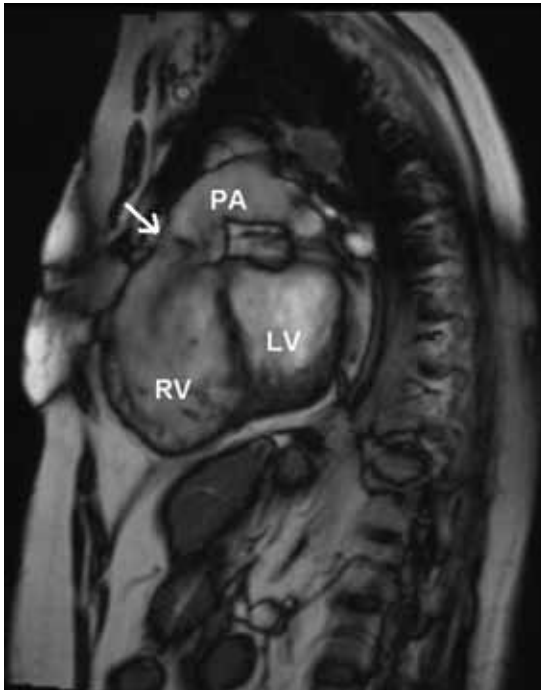
#### Pulmonary valve insufficiency leads to right ventricular systolic dysfunction

The overwhelming issue leading to repeat surgery for tetralogy of Fallot is severe pulmonary valve insufficiency (FIGURE 2).

In the past, pulmonary insufficiency was considered relatively benign because most patients tolerate it well for a long time. As these patients age, however, it becomes the core of their problems.<sup>1</sup> If severe, it may result in right ventricular volume overload and dilatation, fibrosis, arrhythmia, and myocardial damage, all of which are cumulatively detrimental.<sup>25</sup> Right ventricular function and exercise capacity deteriorate, and the tendency toward ventricular arrhythmias develops.<sup>26</sup>

If the problem is chronic, right ventricular systolic function may remain normal for years, during which most patients remain relatively free of symptoms. In time, however, the compensatory mechanisms of the right ventricular myocardium fail, the right ventricular wall stress (afterload) increases, while the right ventricular ejection fraction decreases. Patients begin to experience symptoms, and if the volume load is not reduced, the dysfunction may become irreversible.<sup>27</sup>

**An increase in QRS duration > 3.5 ms/year predicts ventricular arrhythmia and sudden death**



**FIGURE 3.** Sagittal cardiac magnetic resonance image of a patient with repaired tetralogy of Fallot and pulmonic valve regurgitation. The annulus of the pulmonary valve is emphasized by the arrow. The darkening below the annulus is the regurgitant jet. The right ventricle is at least mildly dilated in this image. LV = left ventricle; PA = pulmonary artery; RV = right ventricle.

**MRI is the gold standard for evaluating right ventricular size and function**

■ **PULMONARY INSUFFICIENCY PREDISPOSES TO ARRHYTHMIAS, SUDDEN CARDIAC DEATH**

Pulmonary insufficiency predisposes to atrial and ventricular arrhythmias, presumably due to progressive enlargement and stretching of the right atrium and ventricle.

Clinically significant atrial arrhythmias, predominantly intra-atrial reentrant tachycardia but also atrial tachycardia and atrial fibrillation, occur in 12% to 35% of patients with repaired tetralogy of Fallot.<sup>11,28–31</sup>

Ventricular arrhythmias and sudden cardiac death also occur. In one study,<sup>1</sup> 100% of patients who died suddenly had moderate or severe pulmonary insufficiency, and 94% with ventricular tachycardia had significant pulmonary insufficiency. In contrast, only 49% of patients who were arrhythmia-free had sig-

nificant pulmonary insufficiency. None of the patients with late sudden death or ventricular tachycardia had undergone late pulmonary valve replacement. This is further supported by a multicenter analysis of patients with repaired tetralogy, which demonstrated that moderate or severe pulmonary insufficiency was the main hemodynamic abnormality in patients with ventricular tachycardia and sudden death.<sup>11</sup>

In general, the risk of late sudden death is 25 to 100 times higher in patients who survive surgery for congenital heart disease than in age-matched controls, and the risk is even higher for those with cyanotic conditions such as tetralogy of Fallot. In fact, one-third to one-half of deaths in adults with tetralogy of Fallot are sudden.<sup>25,32</sup>

■ **FINDINGS ON ASSESSMENT**

Most patients with tetralogy of Fallot remain free of symptoms for many years. While individual responses to pulmonary insufficiency vary, symptoms generally get worse as the pulmonary insufficiency gets worse. Patients present with a spectrum of complaints, from palpitations to a general decline in function. Late symptoms include exertional dyspnea, palpitations, right heart failure, and syncope.<sup>17</sup>

Signs of right ventricular failure can include elevated jugular venous pressure, peripheral edema, hepatomegaly, ascites,<sup>33</sup> and jugular venous distention with a large *a* wave.

**Heart murmurs**

Pulmonary insufficiency causes a low-pitched, brief diastolic murmur. Although often present, it may be short or difficult to hear, even if the regurgitation is severe, because this is “low-pressure” pulmonary insufficiency as opposed to the regurgitation that can occur in patients with pulmonary hypertension. Therefore, this murmur is often missed on physical examination.

There may be an ejection click due to a dilated aorta. An aortic insufficiency murmur may also be present.

A right ventricular outflow murmur is generally audible, along with a pansystolic murmur if a residual ventricular septal defect is also present.

A right-sided aortic arch, present in about 25% of patients with tetralogy of Fallot, may cause a lift below the right sternoclavicular junction.<sup>17</sup>

### Electrocardiographic findings

Electrocardiography commonly shows right ventricular hypertrophy with a right bundle branch block. The longer the QRS duration, the greater the right ventricular volume and mass. Furthermore, a QRS duration greater than 180 ms is a significant marker of risk of ventricular arrhythmias and sudden death.<sup>22,34-37</sup>

Another feature strongly associated with ventricular arrhythmias and sudden death is the rate of change in the QRS duration. A relatively rapid increase ( $> 3.5$  ms/year) is associated with a significantly higher risk.<sup>1</sup> A rapid rate of change may be meaningful even if the QRS duration is not markedly prolonged.<sup>11</sup>

Reduced heart rate variability also appears to be a marker of risk of sudden cardiac death in these patients.<sup>38,39</sup>

### Imaging studies

**Chest radiography** typically shows a prominent right ventricular shadow and cardiomegaly.<sup>17</sup>

**Magnetic resonance imaging (MRI)** is the gold standard for evaluating right ventricular size and function as well as pulmonary regurgitant volumes, and it is the imaging test of choice when assessing pulmonary valve competence and right ventricular hemodynamics (FIGURE 3).<sup>40-42</sup> MRI velocity mapping is currently the only practical imaging technique available that reproducibly measures pulmonary regurgitation volume.<sup>43</sup> It can measure right and left ventricular volumes and mass and can help in assessing the status of the right ventricular outflow tract, the pulmonary arteries, the aorta, and any residual ventricular septal defect. MRI can also show branch pulmonary artery stenosis, which can contribute to increasing pulmonary insufficiency, and aortopulmonary collaterals, which can contribute to left ventricular volume overload. They are particularly common in patients with pulmonary atresia.

Many centers specializing in congenital heart disease therefore recommend baseline

cardiac MRI, even for patients without symptoms.<sup>33</sup>

### PULMONARY VALVE REPLACEMENT IS THE ONLY PROVEN TREATMENT

No study has yet shown that drug therapy alone slows the progression of complications.<sup>1</sup> Pulmonary valve replacement is the only treatment proven to reduce right ventricular size and improve right ventricular function in the long term.

The risks of surgery, including the need for repeat operations, must be balanced against the risk of irreversible right ventricular dysfunction and its associated complications. The operative death rate is low, as is the long-term risk of death afterward. Therrien et al<sup>12</sup> reported that, in a series of 70 patients who underwent pulmonary valve replacement, the probability of survival was 92% at 5 years and 86% at 10 years.

Surgery appears to reverse or at least arrest the progression of many of the complications associated with pulmonary insufficiency, including tricuspid regurgitation and diastolic dysfunction.<sup>17</sup> Its utility in ameliorating ventricular tachycardia, however, remains controversial. One series showed a lower prevalence of tachycardia after pulmonary valve replacement (9% after surgery vs 22% before), but later studies have had more equivocal results.<sup>17</sup>

### When should surgery be done?

There is little controversy about the eventual need for pulmonary valve replacement in most patients. What is controversial is the timing.<sup>12,44-47</sup>

This issue has been hotly debated. Some believe that pulmonary valve replacement should be done only if evidence of right ventricular dysfunction has developed.<sup>17</sup> Others suggest that it be considered earlier and that the onset of symptoms may be a late and suboptimal indication for it.<sup>6,8,48,49</sup> Many experts now recommend surgery early, before symptoms of heart failure develop.<sup>17</sup> Though surgery has traditionally been recommended if the QRS duration is longer than 180 ms, some believe it should be done before this occurs.<sup>11</sup>

**Arguments for early surgery.** In one study, in no patient who had a right ventricu-

An estimated 45% of bioprosthetic valves fail by 10 years

lar end-diastolic volume greater than 170 mL/m<sup>2</sup> (normal ≤ 108) or a right ventricular end-systolic volume greater than 85 mL/m<sup>2</sup> (normal ≤ 47) did these numbers return to normal after pulmonary valve replacement.<sup>45,50</sup> This suggests a point of irreversible dilatation and a volume threshold beyond which right ventricular function is unlikely to completely improve. Normalization of right ventricular volumes was shown to occur when pulmonary valve replacement was performed before the right ventricular end-diastolic volume reached 160 mL/m<sup>2</sup> or the right ventricular end-systolic volume reached 82 mL/m<sup>2</sup>.<sup>47,51</sup>

Delaying surgery until symptoms occur may be unfavorable because the long-term outcomes of increased right ventricular volumes and decreased right ventricular ejection fractions after surgery are not known.

**Arguments for watchful waiting.** There does not seem to be a threshold above which right ventricular volumes do not decrease after surgery—although they may not decrease to the normal range. Pulmonary valve replacement substantially reduced right ventricular dilatation even in patients with very high right ventricular volumes and right ventricular dysfunction, and resulted in an overall improvement in function (measured by New York Heart Association class).<sup>47</sup>

Late pulmonary valve replacement rapidly improves right ventricular volumes and improves the effective ejection fraction, although its impact on absolute right ventricular function is not as pronounced. The QRS duration shortened after surgery in those in whom it was 180 ms or longer before surgery, although this appeared to be a transient change.<sup>52</sup> The prevalence of ventricular tachycardia declined from 22% to 9% and that of atrial fibrillation or flutter declined from 17% to 12%.<sup>17,48</sup>

A recent study with long-term follow-up has raised questions about the necessity of aggressive early intervention in tetralogy of Fallot. Sixty-seven patients were followed for as long as 27 years after surgery. Forty-five had severe pulmonary insufficiency and severe right ventricular dilatation, and of those, 28 remained free of symptoms and did not undergo pulmonary valve replacement. The authors found that refraining from pulmonary valve replacement in asymptomatic

patients with severe pulmonary insufficiency led to no measurable deterioration in 25 of 28 patients.<sup>53</sup>

The available data do not support pulmonary valve replacement in young patients with mild or moderate right ventricular dilatation, normal right ventricular systolic function, and no additional risk factors.<sup>27</sup>

### Mechanical vs bioprosthetic replacement valves

Once the decision is made to proceed to surgery, the next step is choosing the type of prosthetic valve.

Mechanical valves pose a risk of thrombosis, requiring life-long anticoagulation. To give warfarin (Coumadin) to younger, active people exposes them to the risk of potentially catastrophic bleeding if trauma were to occur. Women who become pregnant are generally at an increased risk of thrombotic complications due to the hypercoagulable state of pregnancy, but the risk of fetal defects is considerable if they receive warfarin.<sup>54-56</sup>

Bioprosthetic valves generally come in two varieties: preserved and treated human tissue (homografts) and animal tissue (bovine pericardial or porcine, depending on the size required). These can be implanted as isolated valves or as part of a conduit (valve and surrounding tissue).

Bioprosthetic valves eliminate the need for anticoagulation. However, they are not very durable, especially in younger patients, which is worrisome. An estimated 45% of bioprosthetic valves fail by 10 years,<sup>57</sup> thus nearly guaranteeing that an otherwise healthy 40-year-old, for example, will need to undergo at least one repeat surgery, and very likely more.

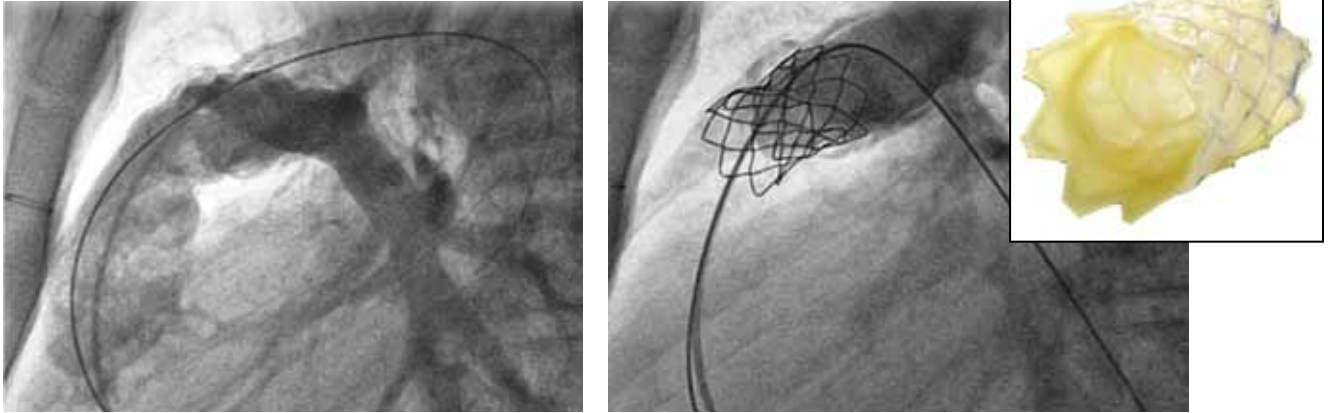
### ■ NOVEL THERAPIES

#### Percutaneous valve replacement

The future of pulmonary valve replacement may lie in percutaneous procedures.

The Melody transcatheter pulmonary valve (Medtronic, Minneapolis, MN) is implanted percutaneously via the femoral vein, guided by fluoroscopy (FIGURE 4). Early results appear very promising, with significant reductions in pulmonary insufficiency and right

## The Melody transcatheter pulmonary valve



**FIGURE 4.** The Melody transcatheter pulmonary valve (Medtronic; Minneapolis, MN). **Left**, pulmonary angiography helps guide catheter delivery of the valve into the right ventricular outflow tract. The angiogram also demonstrates severe pulmonary valve insufficiency. **Right**, a fully expanded valve (inset), with angiography demonstrating near-complete resolution of pulmonary valve insufficiency.

ventricular size, as well as improved exercise tolerance.<sup>58-60</sup>

The Melody valve is now approved through a humanitarian device exemption (ie, based on demonstrated safety without proven efficacy) for patients who have a prior pulmonary conduit now complicated by either stenosis or regurgitation.

If percutaneous pulmonary valve replacement proves to have reasonable long-term durability, it has the potential to dramatically shift the balance toward earlier intervention.

### Pulmonary vasodilator drugs

Our group is examining whether pharmacologic therapy can alter the clinical outcome in patients with pulmonary insufficiency (due to either tetralogy of Fallot or valvotomy done to treat remote pulmonary stenosis). Specifically, we are using MRI to examine the effects of inhaled nitric oxide, a selective pulmonary vasodilator. Preliminary results suggest that such a strategy may work, and we are designing a trial to examine the longer-term benefit of using an oral drug with similar properties. ■

### REFERENCES

1. Gregg D, Foster E. Pulmonary insufficiency is the nexus of late complications in tetralogy of Fallot. *Curr Cardiol Rep* 2007; 9:315-322.
2. Khairy P, Hosn JA, Broberg C, et al; Alliance for Adult Research in Congenital Cardiology (AARCC). Multicenter research in adult congenital heart disease. *Int J Cardiol* 2008; 129:155-159.
3. Warnes CA, Williams RG, Bashore TM, et al. ACC/AHA 2008 Guidelines for the Management of Adults with Congenital Heart Disease: a report of the American College of Cardiology/American Heart Association Task Force on Practice Guidelines (writing committee to develop guidelines on the management of adults with congenital heart disease). *Circulation* 2008; 118:e714-e833.
4. Perloff JK, Warnes CA. Challenges posed by adults with repaired congenital heart disease. *Circulation* 2001; 103:2637-2643.
5. Hickey EJ, Veldtman G, Bradley TJ, et al. Late risk of outcomes for adults with repaired tetralogy of Fallot from an inception cohort spanning four decades. *Eur J Cardiothorac Surg* 2009; 35:156-164.
6. Apitz C, Webb GD, Redington AN. Tetralogy of Fallot. *Lancet* 2009; 374:1462-1471.
7. Gatzoulis MA, Clark AL, Cullen S, Newman CG, Redington AN. Right ventricular diastolic function 15 to 35 years after repair of tetralogy of Fallot. Restrictive physiology predicts superior exercise performance. *Circulation* 1995; 91:1775-1781.
8. van Straten A, Vliegen HW, Hazekamp MG, et al. Right ventricular function after pulmonary valve replacement in patients with tetralogy of Fallot. *Radiology* 2004; 233:824-829.
9. Bouzas B, Kilner PJ, Gatzoulis MA. Pulmonary regurgitation: not a benign lesion. *Eur Heart J* 2005; 26:433-439.
10. Redington AN. Determinants and assessment of pulmonary regurgitation in tetralogy of Fallot: practice and pitfalls. *Cardiol Clin* 2006; 24:631-639.
11. Gatzoulis MA, Balaji S, Webber SA, et al. Risk factors for arrhythmia and sudden cardiac death late after repair of tetralogy of Fallot: a multicentre study. *Lancet* 2000; 356:975-981.
12. Therrien J, Siu SC, Harris L, et al. Impact of pulmonary valve replacement on arrhythmia propensity late after repair of tetralogy of Fallot. *Circulation* 2001; 103:2489-2494.
13. Deanfield JE, McKenna WJ, Presbitero P, England D, Graham GR, Hallidie-Smith K. Ventricular arrhythmia in unrepaired and repaired tetralogy of Fallot. Relation to age, timing of repair, and haemodynamic status. *Br Heart J* 1984; 52:77-81.
14. Murphy JG, Gersh BJ, Mair DD, et al. Long-term outcome in patients undergoing surgical repair of tetralogy of Fallot. *N Engl J Med* 1993; 329:593-599.
15. Mackie AS, Ionescu-Ittu R, Therrien J, Pilote L, Abrahamowicz M, Marelli AJ. Children and adults with congenital heart disease lost to follow-up: who and when? *Circulation* 2009; 120:302-309.

16. Pinsky WW, Arciniegas E. Tetralogy of Fallot. *Pediatr Clin North Am* 1990; 37:179-192.
17. Bashore TM. Adult congenital heart disease: right ventricular outflow tract lesions. *Circulation* 2007; 115:1933-1947.
18. Walters HL 3rd, Mavroudis C, Tchervenkov CI, Jacobs JP, Lacour-Gayet F, Jacobs ML. Congenital Heart Surgery Nomenclature and Database Project: double outlet right ventricle. *Ann Thorac Surg* 2000; 69(suppl 4):S249-S263.
19. Van Arsdell GS, Maharaj GS, Tom J, et al. What is the optimal age for repair of tetralogy of Fallot? *Circulation* 2000; 102(suppl 3):III123-III129.
20. Cheung MM, Konstantinov IE, Redington AN. Late complications of repair of tetralogy of Fallot and indications for pulmonary valve replacement. *Semin Thorac Cardiovasc Surg* 2005; 17:155-159.
21. Babu-Narayan SV, Gatzoulis MA. Management of adults with operated tetralogy of Fallot. *Curr Treat Options Cardiovasc Med* 2003; 5:389-398.
22. Gatzoulis MA, Till JA, Somerville J, Redington AN. Mechanoelectrical interaction in tetralogy of Fallot. QRS prolongation relates to right ventricular size and predicts malignant ventricular arrhythmias and sudden death. *Circulation* 1995; 92:231-237.
23. van Doorn C. The unnatural history of tetralogy of Fallot: surgical repair is not as definitive as previously thought. *Heart* 2002; 88:447-448.
24. Norton KI, Tong C, Glass RB, Nielsen JC. Cardiac MR imaging assessment following tetralogy of Fallot repair. *Radiographics* 2006; 26:197-211.
25. Bhat AH, Sahn DJ. Congenital heart disease never goes away, even when it has been "treated": the adult with congenital heart disease. *Curr Opin Pediatr* 2004; 16:500-507.
26. Redington AN. Determinants and assessment of pulmonary regurgitation in tetralogy of Fallot: practice and pitfalls. *Cardiol Clin* 2006; 24:631-639.
27. Geva T. Indications and timing of pulmonary valve replacement after tetralogy of Fallot repair. *Semin Thorac Cardiovasc Surg Pediatr Card Surg Annu* 2006:11-22.
28. Khairy P, Dore A, Talajic M, et al. Arrhythmias in adult congenital heart disease. *Expert Rev Cardiovasc Ther* 2006; 4:83-95.
29. Roos-Hesselink J, Perloth MG, McGhie J, Spitaels S. Atrial arrhythmias in adults after repair of tetralogy of Fallot. Correlations with clinical, exercise, and echocardiographic findings. *Circulation* 1995; 91:2214-2219.
30. Harrison DA, Siu SC, Hussain F, MacLoughlin CJ, Webb GD, Harris L. Sustained atrial arrhythmias in adults late after repair of tetralogy of Fallot. *Am J Cardiol* 2001; 87:584-588.
31. Collins KK, Dubin AM. Detecting and diagnosing arrhythmias in adults with congenital heart disease. *Curr Cardiol Rep* 2003; 5:331-335.
32. Silka MJ, Hardy BG, Menashe VD, Morris CD. A population-based prospective evaluation of risk of sudden cardiac death after operation for common congenital heart defects. *J Am Coll Cardiol* 1998; 32:245-251.
33. Ammash NM, Dearani JA, Burkhart HM, Connolly HM. Pulmonary regurgitation after tetralogy of Fallot repair: clinical features, sequelae, and timing of pulmonary valve replacement. *Congenit Heart Dis* 2007; 2:386-403.
34. Berul CI, Hill SL, Geggel RL, et al. Electrocardiographic markers of late sudden death risk in postoperative tetralogy of Fallot children. *J Cardiovasc Electrophysiol* 1997; 8:1349-1356.
35. Gatzoulis MA, Till JA, Redington AN. Depolarization-repolarization inhomogeneity after repair of tetralogy of Fallot. The substrate for malignant ventricular tachycardia? *Circulation* 1997; 95:401-404.
36. Balaji S, Lau YR, Case CL, Gillette PC. QRS prolongation is associated with inducible ventricular tachycardia after repair of tetralogy of Fallot. *Am J Cardiol* 1997; 80:160-163.
37. Abd El Rahman MY, Abdul-Khaliq H, Vogel M, Alexi-Meskishvili V, Gutberlet M, Lange PE. Relation between right ventricular enlargement, QRS duration, and right ventricular function in patients with tetralogy of Fallot and pulmonary regurgitation after surgical repair. *Heart* 2000; 84:416-420.
38. McLeod KA, Hillis WS, Houston AB, et al. Reduced heart rate variability following repair of tetralogy of Fallot. *Heart* 1999; 81:656-660.
39. Davos CH, Moutafi AC, Alexandridi A, et al. Heart rate turbulence in adults with repaired tetralogy of Fallot. *Int J Cardiol* 2009; 135:308-314.
40. de Roos A, Roest AA. Evaluation of congenital heart disease by magnetic resonance imaging. *Eur Radiol* 2000; 10:2-6.
41. Niezen RA, Helbing WA, van der Wall EE, van der Geest RJ, Rebergen SA, de Roos A. Biventricular systolic function and mass studied with MR imaging in children with pulmonary regurgitation after repair for tetralogy of Fallot. *Radiology* 1996; 201:135-140.
42. Helbing WA, de Roos A. Optimal imaging in assessment of right ventricular function in tetralogy of Fallot with pulmonary regurgitation. *Am J Cardiol* 1998; 82:1561-1562.
43. van der Geest RJ, de Roos A, van der Wall EE, Reiber JH. Quantitative analysis of cardiovascular MR images. *Int J Card Imaging* 1997; 13:247-258.
44. Therrien J, Siu SC, McLaughlin PR, Liu PP, Williams WG, Webb GD. Pulmonary valve replacement in adults late after repair of tetralogy of Fallot: are we operating too late? *J Am Coll Cardiol* 2000; 36:1670-1675.
45. Therrien J, Provost Y, Merchant N, Williams W, Colman J, Webb G. Optimal timing for pulmonary valve replacement in adults after tetralogy of Fallot repair. *Am J Cardiol* 2005; 95:779-782.
46. Davlouros PA, Karatza AA, Gatzoulis MA, Shore DF. Timing and type of surgery for severe pulmonary regurgitation after repair of tetralogy of Fallot. *Int J Cardiol* 2004; 97(suppl 1):91-101.
47. Oosterhof T, van Straten A, Vliegen HW, et al. Preoperative thresholds for pulmonary valve replacement in patients with corrected tetralogy of Fallot using cardiovascular magnetic resonance. *Circulation* 2007; 116:545-551.
48. Buechel ER, Dave HH, Kellenberger CJ, et al. Remodelling of the right ventricle after early pulmonary valve replacement in children with repaired tetralogy of Fallot: assessment by cardiovascular magnetic resonance. *Eur Heart J* 2005; 26:2721-2727.
49. Henkens IR, van Straten A, Schaliij MJ, et al. Predicting outcome of pulmonary valve replacement in adult tetralogy of Fallot patients. *Ann Thorac Surg* 2007; 83:907-911.
50. Therrien J, Provost Y, Merchant N, Williams W, Colman J, Webb G. Optimal timing for pulmonary valve replacement in adults after tetralogy of Fallot repair. *Am J Cardiol* 2005; 95:779-782.
51. Redington AN. Physiopathology of right ventricular failure. *Semin Thorac Cardiovasc Surg Pediatr Card Surg Annu* 2006: 3-10.
52. Oosterhof T, Vliegen HW, Meijboom FJ, Zwinderman AH, Bouma B, Mulder BJ. Long-term effect of pulmonary valve replacement on QRS duration in patients with corrected tetralogy of Fallot. *Heart* 2007; 93:506-509.
53. Meijboom FJ, Roos-Hesselink JW, McGhie JS, et al. Consequences of a selective approach toward pulmonary valve replacement in adult patients with tetralogy of Fallot and pulmonary regurgitation. *J Thorac Cardiovasc Surg* 2008; 135:50-55.
54. Danik S, Fuster V. The obstetrical patient with a prosthetic heart valve. *Obstet Gynecol Clin North Am* 2006; 33:481-491.
55. Danik S, Fuster V. Anticoagulation in pregnant women with prosthetic heart valves. *Mt Sinai J Med* 2004; 71:322-329.
56. Manso B, Gran F, Pijuan A, et al. Pregnancy and congenital heart disease (article in Spanish). *Rev Esp Cardiol* 2008; 61:236-243.
57. Gallegos RP. Selection of prosthetic heart valves. *Curr Treat Options Cardiovasc Med* 2006; 8:443-452.
58. Bonhoeffer P, Boudjemline Y, Qureshi SA, et al. Percutaneous insertion of the pulmonary valve. *J Am Coll Cardiol* 2002; 39:1664-1669.
59. Khambadkone S, Coats L, Taylor A, et al. Percutaneous pulmonary valve implantation in humans: results in 59 consecutive patients. *Circulation* 2005; 112:1189-1197.
60. Lurz P, Coats L, Khambadkone S, et al. Percutaneous pulmonary valve implantation: impact of evolving technology and learning curve on clinical outcome. *Circulation* 2008; 117:1964-1972.

ADDRESS: Richard A. Krasuski, MD, Department of Cardiovascular Medicine, Section of Clinical Cardiology, J2-4, Cleveland Clinic, 9500 Euclid Avenue, Cleveland, OH 44195; krasusr@ccf.org.