

# A longitudinal study of epigenetic variation in twins

Chloe Chung Yi Wong,<sup>1,\*</sup> Avshalom Caspi,<sup>1,2</sup> Benjamin Williams,<sup>1,2</sup> Ian W. Craig,<sup>1</sup> Renate Houts,<sup>2</sup> Antony Ambler,<sup>1</sup> Terrie E. Moffitt<sup>1,2</sup> and Jonathan Mill<sup>1</sup>

<sup>1</sup>MRC Social, Genetic and Developmental Psychiatry Centre; Institute of Psychiatry; King's College London; London, UK; <sup>2</sup>Departments of Psychology and Neuroscience, Psychiatry and Behavioral Sciences; and Institute for Genome Sciences and Policy; Duke University; Durham, NC USA

**Key words:** epigenetics, DNA methylation, twin, heritability, dynamic, environment

DNA methylation is a key epigenetic mechanism involved in the developmental regulation of gene expression. Alterations in DNA methylation are established contributors to inter-individual phenotypic variation and have been associated with disease susceptibility. The degree to which changes in loci-specific DNA methylation are under the influence of heritable and environmental factors is largely unknown. In this study, we quantitatively measured DNA methylation across the promoter regions of the dopamine receptor 4 gene (*DRD4*), the serotonin transporter gene (*SLC6A4/SERT*) and the X-linked monoamine oxidase A gene (*MAOA*) using DNA sampled at both ages 5 and 10 years in 46 MZ twin-pairs and 45 DZ twin-pairs (total n = 182). Our data suggest that DNA methylation differences are apparent already in early childhood, even between genetically identical individuals, and that individual differences in methylation are not stable over time. Our longitudinal-developmental study suggests that environmental influences are important factors accounting for interindividual DNA methylation differences, and that these influences differ across the genome. The observation of dynamic changes in DNA methylation over time highlights the importance of longitudinal research designs for epigenetic research.

## Introduction

Epigenetics refers to the reversible regulation of various genomic functions mediated principally through changes in DNA methylation and chromatin structure.<sup>1</sup> Epigenetic processes are essential for normal cellular development and tissue differentiation, and allow the long-term regulation of gene function through non-mutagenic mechanisms.<sup>2</sup> Unlike the DNA sequence which is stable and strongly conserved, epigenetic processes are developmentally dynamic, and are known to be influenced by numerous factors including the environment,<sup>3</sup> DNA sequence variation<sup>4,5</sup> and stochastic events in the cell.<sup>6</sup>

DNA methylation is the best understood epigenetic modification modulating transcriptional plasticity. The addition of a methyl group at CpG dinucleotides, over-represented in CpG-islands in the promoter regulatory regions of many genes, displaces the binding of transcription factors and attracts methyl-binding proteins that instigate chromatin compaction and gene silencing.<sup>1</sup> In addition to regulating gene expression, DNA methylation plays a critical role in mediating X-chromosome inactivation in females,<sup>7</sup> the maintenance of genomic imprinting<sup>8</sup> and protecting the genome from pathogenic retroviral elements.<sup>9</sup> Because epigenetic processes are integral for cellular development and function, aberrant DNA methylation signatures are

hypothesized to be involved in diverse human pathologies<sup>10</sup> including cancer,<sup>11</sup> imprinting disorders<sup>12</sup> and a range of complex neuropsychiatric phenotypes such as psychosis,<sup>13</sup> depression,<sup>14</sup> drug addiction,<sup>15</sup> ADHD<sup>16</sup> and autism.<sup>17</sup>

The factors influencing dynamic epigenetic processes are complex and not yet fully understood. Two questions have yet to be fully answered. First, to what extent is DNA methylation influenced by heritable versus environmental factors? Second, what is the stability of DNA methylation over time? A better understanding of the factors influencing variation in DNA methylation and their role in mediating DNA methylation dynamics is important. This will not only elucidate the role of these factors in producing DNA methylation differences that may underlie complex multifactorial disorders, but will also inform future epigenetic studies that undertake a cross-sectional approach.

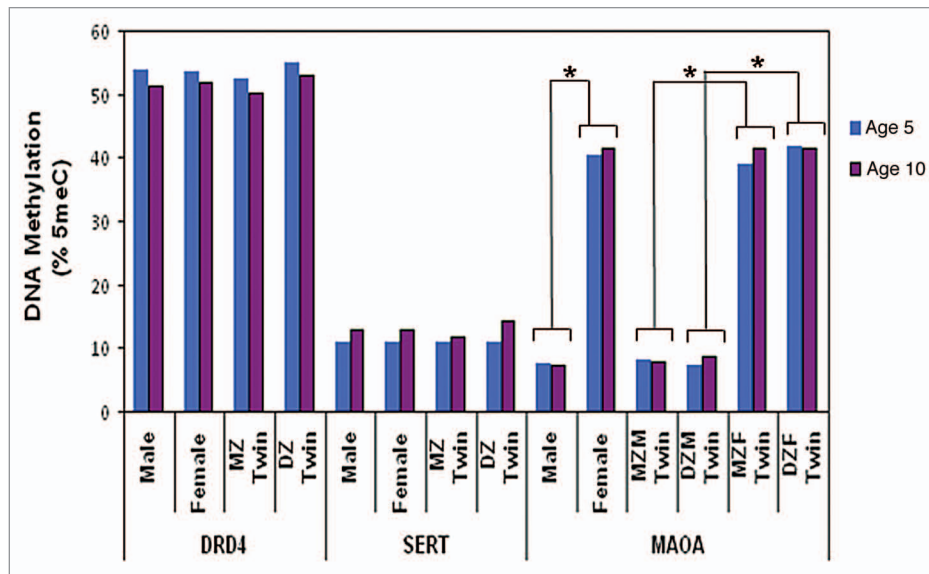
The most powerful method to estimate the contribution of heritable and environmental factors to variation in a quantitative trait such as DNA methylation is to compare the degree of within-pair twin concordance between monozygotic (MZ) and dizygotic (DZ) twin pairs.<sup>18</sup> To date, only a few studies have used this approach to estimate the heritability of DNA methylation. One study reported significantly higher genome-wide epigenetic differences in buccal cells obtained from DZ co-twins compared

\*Correspondence to: Chloe Chung Yi Wong; Email: chloe.wong@kcl.ac.uk

Submitted: 03/05/10; Accepted: 05/04/10

Previously published online: [www.landesbioscience.com/journals/epigenetics/article/12226](http://www.landesbioscience.com/journals/epigenetics/article/12226)

DOI: 10.4161/epi.5.6.12226



**Figure 1.** Average DNA methylation level in *DRD4*, *SERT* and *MAOA* amplicons at ages 5 and 10 years. \* Significant differences ( $p < 0.001$ ) in average *MAOA* DNA methylation level between male and female children. MZ, monozygotic; DZ, dizygotic; MZM, monozygotic male; MZF, monozygotic female; DZM, dizygotic male; DZF, dizygotic female.

to MZ co-twins, suggesting that epigenetic signatures may be heritable.<sup>19</sup> Another study detected high levels of heritability for a small proportion (23%) of CpG sites analysed in a genome-wide study,<sup>20</sup> although the majority of CpG sites showed little evidence of heritability. A number of other studies have uncovered DNA methylation differences between inbred animals<sup>21,22</sup> and between MZ twins,<sup>19,20,23-25</sup> suggesting that environmental factors are likely to influence DNA methylation.

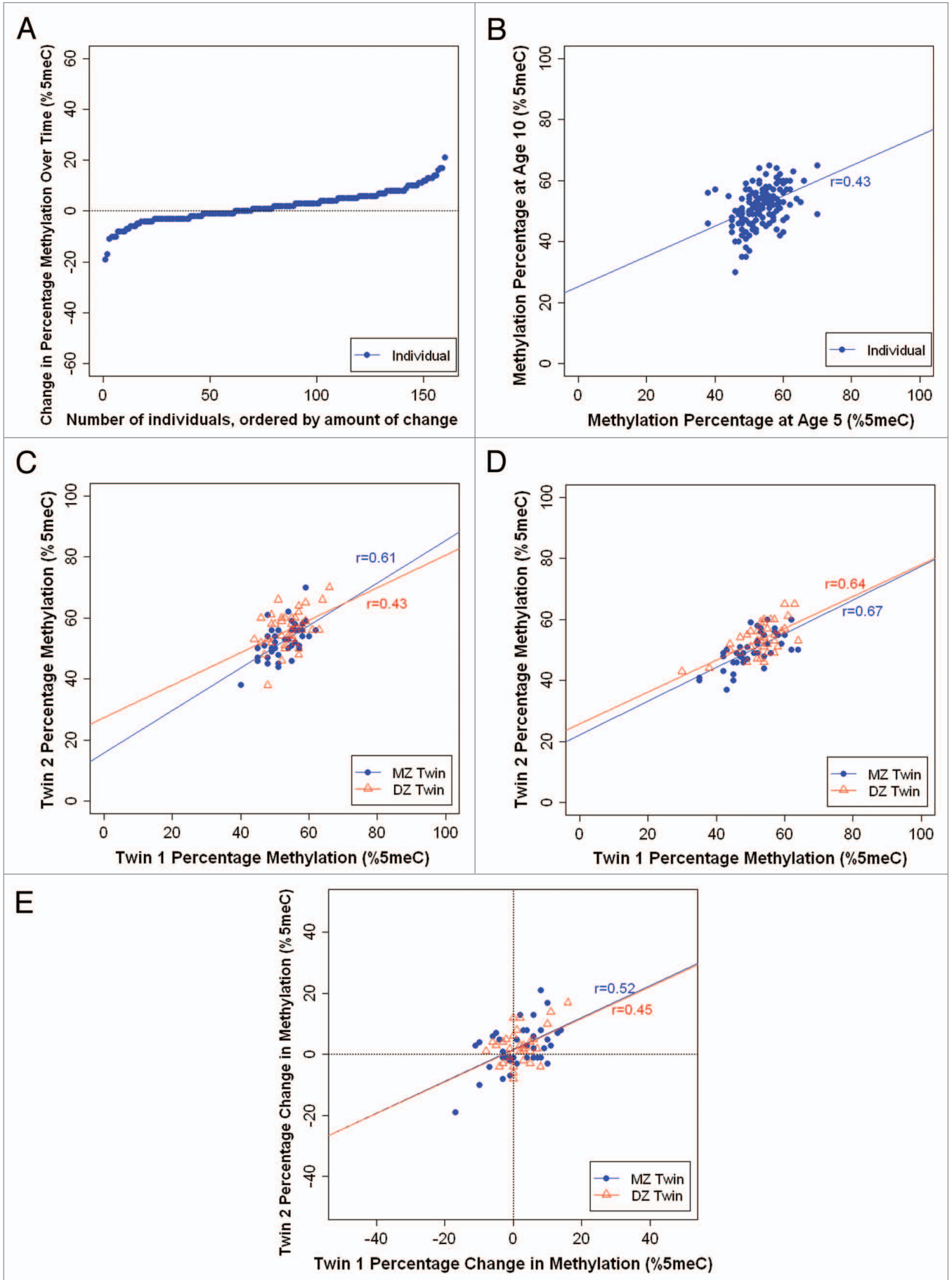
The most powerful method to estimate the extent of DNA methylation change over time is to carry out an intra-individual longitudinal study tracking developmental changes in the same individuals. Despite evidence that dynamic changes in DNA methylation occur in conjunction with normal developmental processes and aging, or in response to environmental stimuli,<sup>26</sup> little empirical work has assessed intra-individual changes over time across specific regions of the genome. Two studies are of note. The first compared the epigenetic profiles of young and old MZ twins, finding that epigenetic discordance increased with age,<sup>23</sup> although this study was cross-sectional and did not assess developmental change in the same individuals. A second study assessed developmental changes in DNA methylation over time using singleton and family-based cohorts.<sup>27</sup> Interestingly, this study found evidence for familial clustering of DNA methylation change over time, suggesting that the maintenance of DNA methylation may be under some genetic control, at least at a global level.

Although findings from these recent studies have shed light on the complex nature of DNA methylation, to our knowledge no study has assessed the degree to which changes in loci-specific DNA methylation over time are under the influence of heritable, environmental or stochastic factors. Here we report findings from a longitudinal twin study involving DNA sampled at two time points from both MZ and DZ twin-pairs. We address

three questions: (1) Are individual differences in DNA methylation stable over time? (2) Is DNA methylation in childhood familial and if so, is it heritable? (3) Is change in DNA methylation between ages 5 and 10 years heritable or environmentally regulated?

To date, most research on longitudinal changes in DNA methylation has focused on adults, with suggestion that the epigenome becomes more variable with age, a phenomenon described as 'epigenetic drift'.<sup>23</sup> Previous work from our group highlighted significant DNA methylation differences within MZ-twin pairs detectable even in very young children.<sup>24</sup> In this study we therefore focus on epigenetic changes occurring during the first decade of life. The epigenome is particularly labile during early development, especially in utero and through childhood when the complex patterns of DNA methylation and histone modifications required for normal tissue differentiation and development are being established.<sup>3</sup> As epigenetic patterns are inherited mitotically in somatic cells, they provide a possible mechanism by which the effects of external environmental factors at specific stages in development can be propagated through development, producing long-term phenotypic changes.

In this study we assess the extent to which heritable and environmental factors contribute to individual differences and developmental changes in DNA methylation at specific regions of the genome during childhood. We focus on DNA methylation across the promoter regions of three key genes studied widely in the field of biological psychiatry: the dopamine receptor 4 gene (*DRD4*), the serotonin transporter gene (*SLC6A4*, also referred to as *SERT*) and the monoamine oxidase A gene (*MAOA*). Genetic variation in all three genes has been implicated in the etiology of psychiatric disorders including attention deficit hyperactivity disorder (*DRD4*), depression (*SERT*) and antisocial behavior (*MAOA*).<sup>28-30</sup> However, these genetic associations are inconsistent



**Figure 2 (See opposite page).** Longitudinal analysis of *DRD4* DNA methylation in MZ and DZ twins. (A) Individual changes in average *DRD4* DNA methylation between ages 5 and 10 years. (B) Inter-individual stability correlations for *DRD4* DNA methylation, between ages 5 and 10 years. (C) MZ and DZ twin correlations for average *DRD4* DNA methylation at age 5. (D) MZ and DZ twin correlations for average *DRD4* DNA methylation at age 10. (E) MZ and DZ twin correlations for intraindividual change in *DRD4* DNA methylation from age 5 to age 10 years.

and are sometimes only present in the context of environmental influences, suggesting that risk may be mediated by gene-environment interactions.<sup>31-33</sup> Since epigenetic factors are known to operate at the interface between ‘nature’ and ‘nurture’, we selected these genes as the initial focus for our longitudinal twin analyses of DNA methylation.

## Results

The average DNA methylation levels across *DRD4*, *SERT* and *MAOA* amplicons are described in **Figure 1**, with DNA methylation at individual CpG units shown in **Supplementary Figure 2**. As expected, there were no significant group differences in average DNA methylation level in the genes investigated (*DRD4*, *SERT* and *MAOA*) between MZ and DZ twins, between the two time points (ages 5 and 10 years), or between sexes (except for *MAOA*). The significant sex differences in *MAOA* DNA methylation at ages 5 ( $F(1,124) = 344.81$ ,  $p < 0.001$  for all twins;  $F(1,125) = 151.15$ ,  $p < 0.001$  for MZ twins; and  $F(1,124) = 195.42$ ,  $p < 0.001$  for DZ twins) and 10 years ( $F(1,123) = 392.96$ ,  $p < 0.001$  for all twins;  $F(1,225) = 104.07$ ,  $p < 0.001$  for MZ twins; and  $F(1,225) = 94.51$ ,  $p < 0.001$  for DZ twins) are expected and can be explained by the allele-specific silencing of one X chromosome by X-inactivation in females.<sup>34</sup> Next, we review the stability and heritability of DNA methylation for each gene, in turn.

***DRD4*. Stability.** We observed a wide range of changes in average *DRD4* DNA methylation between ages 5–10 years (**Fig. 2A**). While DNA methylation across the *DRD4* amplicon increased in some children (negative change value), it decreased in other children (positive change value) over time. The methylation change ranged from -19% to +21%; 43% of children ( $n = 68$ ) showed a change of at least 5% and 15% of children ( $n = 24$ ) showed a change of at least 10% in *DRD4* DNA methylation between age 5–10 years. Interestingly, despite these mean level changes, we observed significant inter-individual stability in *DRD4* DNA methylation from age 5 to age 10 years ( $r = 0.43$ ;  $p < 0.001$ ) (**Fig. 2B**).

**Heritability.** **Figure 2C and D** show the average *DRD4* DNA methylation percentage of each twin versus his/her co-twin at ages 5 and 10 years, respectively. We observed strong twin correlations for *DRD4* DNA methylation. At age 5, the within-pair MZ correlation was 0.61 ( $p < 0.001$ ) and the within-pair DZ correlation was 0.43 ( $p < 0.001$ ). The MZ and DZ twin correlations did not differ significantly from each other ( $Z = 1.10$ ;  $p = 0.27$ ). At age 10, the within-pair MZ correlation was 0.67 ( $p < 0.001$ ) and the within-pair DZ correlation was 0.64 ( $p < 0.001$ ), and did not differ significantly from each other ( $Z = 0.22$ ;  $p = 0.82$ ). **Figure 2E** shows the intraindividual change in *DRD4* methylation from age 5–10 years for each twin versus his/her co-twin. We observed strong twin correlations for change in *DRD4* DNA

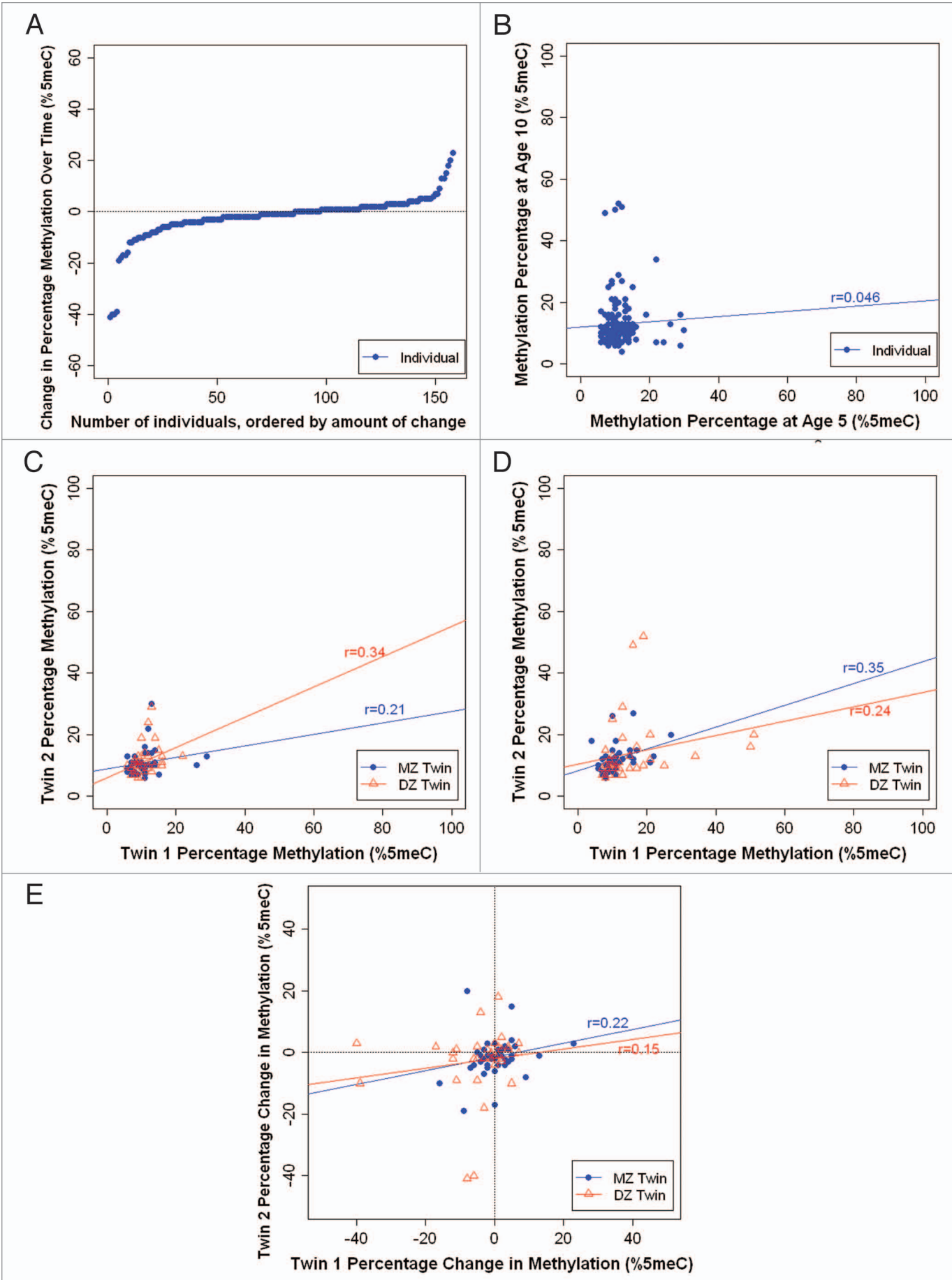
methylation over time. Interestingly, the within-pair correlation in the change in *DRD4* DNA methylation was similar among MZ and DZ twins ( $r = 0.52$ ,  $p < 0.001$  and  $r = 0.45$ ,  $p = 0.003$ , respectively). These results suggest that the familial correlations in *DRD4* methylation change are attributable to environmental factors that are shared by children growing up in the same family, and are not necessarily heritable.

***SERT*. Stability.** We observed a wide range of changes in average *SERT* DNA methylation between ages 5–10 years (**Fig. 3A**). The DNA methylation change ranged from -41% to +23%, with 32% of children ( $n = 50$ ) showing a change of at least 5% and 14% of children ( $n = 22$ ) showing a change of at least 10% in *SERT* DNA methylation. Moreover, we observed no significant inter-individual stability in *SERT* DNA methylation over time ( $r = 0.046$ ;  $p = 0.539$ ) (**Fig. 3B**).

**Heritability.** **Figure 3C and D** show the average *SERT* DNA methylation percentage of each twin versus his/her co-twin at ages 5 and 10 years, respectively. Twin correlations for *SERT* DNA methylation were small to medium in magnitude. At age 5, the within-pair MZ correlation was 0.21 ( $p = 0.165$ ) and the within-pair DZ correlation was 0.34 ( $p = 0.023$ ). The MZ and DZ twin correlations did not differ significantly from each other ( $Z = -0.64$ ;  $p = 0.52$ ). At age 10, the within-pair MZ correlation was 0.35 ( $p = 0.02$ ) and the within-pair DZ correlation was 0.24 ( $p = 0.139$ ), and did not differ significantly from each other ( $Z = 0.54$ ;  $p = 0.59$ ). These relatively low correlations suggest that variation in *SERT* DNA methylation is mostly attributable to unique environmental factors experienced by each child in the family, not to shared environmental events or to heritable factors. **Figure 3E** shows the intraindividual change in *SERT* DNA methylation from age 5–10 years for each twin versus his/her co-twin. We observed low and similar within-pair correlations in *SERT* DNA methylation change among MZ and DZ twins ( $r = 0.22$ ,  $p = 0.167$  and  $r = 0.15$ ,  $p = 0.385$ , respectively). This suggests that variation in *SERT* DNA methylation change amongst children is attributable to unique environmental factors experienced by each child in the family and is not heritable.

***MAOA*.** As expected, because most genes on one X-chromosome are epigenetically silenced by X-chromosome inactivation,<sup>34</sup> we observed significant sex differences in DNA methylation across the *MAOA* amplicon, with males showing very low levels of average methylation and little inter-individual variability ( $7.6\% \pm 5.5\%$  at age 5;  $8.3\% \pm 6.3\%$  at age 10) compared to females who had much higher and more variable levels of *MAOA* DNA methylation ( $40.3\% \pm 14.7\%$  at age 5;  $41.6\% \pm 13.9\%$  at age 10). As such, we carried out all analyses separately for females and males. Because we stratified the sample by sex, our sample size is small and does not permit meaningful statistical comparisons between MZ and DZ twins. However, the pattern of results merits note.





**Figure 3 (See opposite page).** Longitudinal analysis of *SERT* DNA methylation in MZ and DZ twins. (A) Individual changes in average *SERT* DNA methylation between ages 5 and 10 years. (B) Inter-individual stability correlations for *SERT* DNA methylation, between ages 5 and 10 years. (C) MZ and DZ twin correlations for average *SERT* DNA methylation at age 5. (D) MZ and DZ twin correlations for average *SERT* DNA methylation at age 10. (E) MZ and DZ twin correlations for intraindividual change in *SERT* DNA methylation from age 5 to age 10 years.

**Stability.** We observed a wide range of changes in average *MAOA* DNA methylation between ages 5–10 years (Fig. 4A). For male children, between ages 5–10 years, *MAOA* DNA methylation change ranged from -15% to +24%; 51% of children ( $n = 39$ ) showed a change of at least 5 and 18% of children ( $n = 14$ ) showed a change of at least 10%. For female children, between ages 5–10 years, *MAOA* DNA methylation change ranged from -34% to +58%, with 74% of children ( $n = 58$ ) showing a change of at least 10 and 32% of children ( $n = 25$ ) showing a change of at least 20%. In addition, we observed low interindividual stability in *MAOA* DNA methylation over time, for both males ( $r = 0.21$ ;  $p = 0.162$ ) and females ( $r = 0.16$ ;  $p = 0.139$ ) (Fig. 4B), suggesting that children do not maintain their rank order of *MAOA* DNA methylation over time.

**Heritability.** Figure 4C and D show the average *MAOA* DNA methylation percentage of each twin versus his/her co-twin at ages 5 and 10 years, respectively. For males, we observed weak-to-modest twin correlations for *MAOA* DNA methylation. At age 5, the within-pair MZ correlation was 0.28 ( $p = 0.254$ ) and the within-pair DZ correlation was 0.15 ( $p = 0.507$ ). At age 10, the within-pair MZ correlation was 0.39 ( $p = 0.088$ ) and the within-pair DZ correlation was 0.13 ( $p = 0.558$ ). It is of interest that the MZ correlations are about two times the magnitude of the DZ correlations, suggestive of a heritable contribution to individual differences in *MAOA* DNA methylation among male children. Figure 4E shows the intraindividual change in *MAOA* DNA methylation from age 5–10 years for each twin versus his co-twin. The within-pair MZ correlation was 0.35 ( $p = 0.164$ ) and the within-pair DZ correlation was -0.15 ( $p = 0.525$ ). These correlations suggest that while MZ twins are changing in the same direction as their co-twins over time, DZ twins are actually changing in distinct directions over time. For females, we observed very low twin correlations for *MAOA* DNA methylation at ages 5 and 10 years ( $r_s = -0.11$  and  $-0.03$  for MZ twins, and  $r_s = -0.13$  and  $0.1$  for DZ twins, respectively), as well as for intraindividual change from age 5–10 years ( $r = -0.22$  for MZ twins and  $r = 0.01$  for DZ twins), suggesting very little heritability and no common environmental influences on *MAOA* DNA methylation.

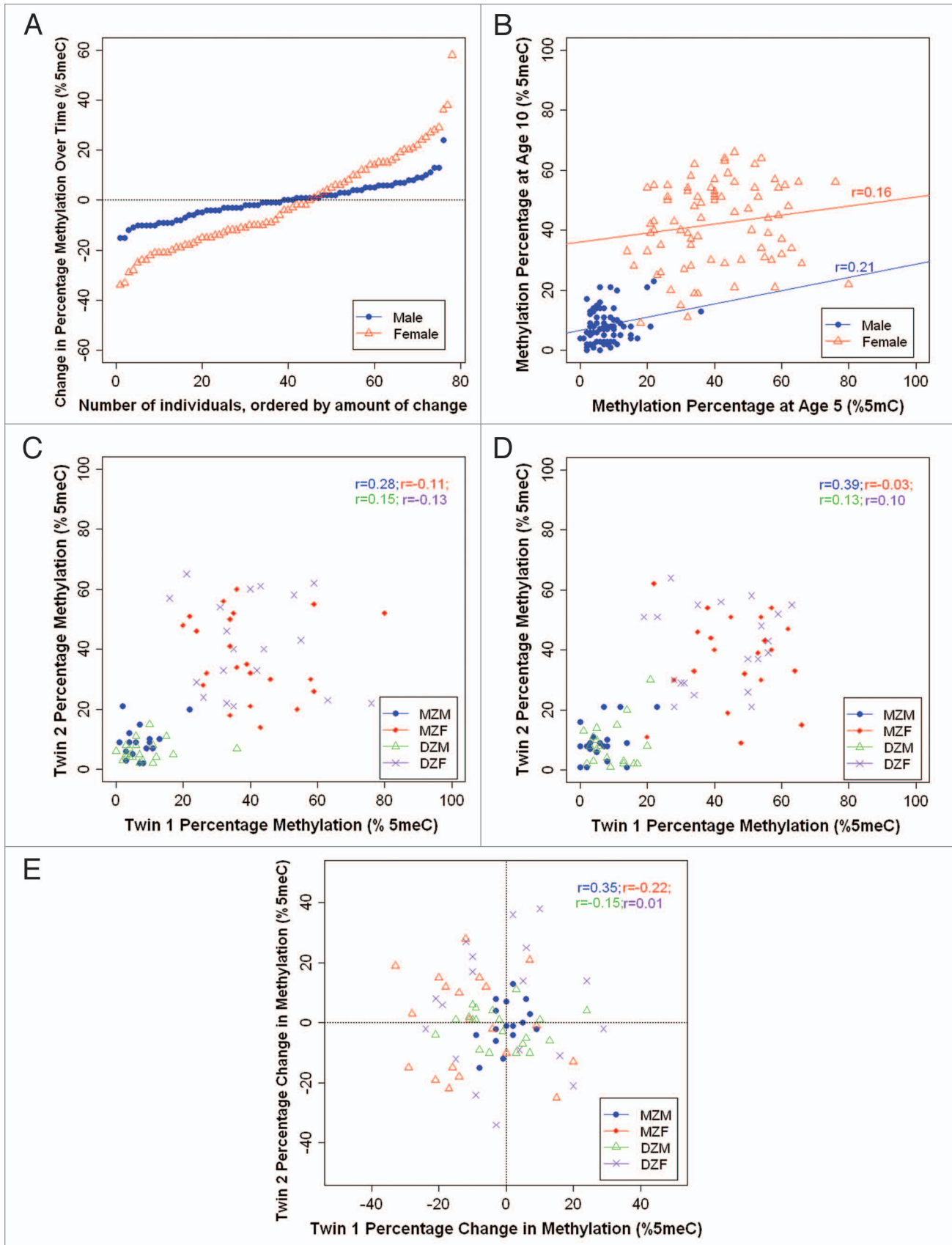
## Discussion

DNA methylation is an important epigenetic mechanism operating at the interface between the genome and the environment to regulate phenotypic plasticity. In this study, we assessed the contribution of heritable and environmental factors to variation in DNA methylation across two ages (5 and 10 years) during childhood development. Quantitative DNA methylation profiling across the promoter/regulatory regions of three neuropsychiatric candidate genes (*DRD4*, *SERT* and *MAOA*) was performed in DNA samples from MZ and DZ twins obtained at two time points. In all three of the analysed regions, we observed

high levels of MZ twin discordance in DNA methylation and dynamic changes in individual DNA methylation between ages 5 and 10 years that could largely be attributed to environmental influences.

For *DRD4*, we observed significant familiarity for average DNA methylation with little evidence of heritability when comparing MZ- and DZ-twin concordance rates. These data suggest that variation in *DRD4* DNA methylation is mostly attributable to environmental factors that are shared among children growing up in the same family. For *SERT*, we observed low levels of familiarity for average DNA methylation and little evidence of heritability. This suggests that variation in *SERT* DNA methylation is primarily attributable to unique environmental factors experienced by each child in the family, and not to shared events or heritable factors. Our finding is of interest since the expression of *SERT* is known to be responsive to unique external psychosocial factors<sup>35</sup> and polymorphisms in the gene have been shown to moderate susceptibility for depression in the context of severe childhood stress.<sup>32</sup> It has been speculated that epigenetic processes may mediate such gene-environment interactions.<sup>36</sup> An alternative explanation is that random stochastic epigenetic changes, unique to each child, influence DNA methylation in the *SERT* promoter. DNA methylation is known to be influenced by stochastic events; experiments tracking the inheritance of epigenetic marks through generations of genetically-identical cells in tissue-culture, for example, have indicated that there is considerable infidelity in the maintenance of DNA methylation patterns in mammalian cells, and that de novo methylation events are fairly common during mitosis.<sup>6,37</sup>

For *MAOA* we observed a more complex pattern of results, with noticeable sex differences in twin concordance at both ages and for change over time. Like most genes on the X-chromosome, *MAOA* demonstrates epigenetically mediated allele-specific expression in females resulting from X-chromosome inactivation.<sup>38</sup> X-chromosome inactivation silences genes on one X-chromosome to ensure dosage compensation with males via a process involving hypermethylation of CpG islands. X-inactivation in any given cell is typically random, and is maintained once established so that the inactivated allele is transcriptionally silenced for the lifetime of that cell.<sup>39</sup> Interestingly, several reports highlight considerable variability in the degree of inactivation of several loci on the X-chromosome in females, including *MAOA*.<sup>38,40,41</sup> Our data showing high between-individual variation in female *MAOA* DNA methylation concur with these observations and indicate variably incomplete inactivation at this locus. Another contributor to interindividual variation in allelic expression across the X-chromosome in females is skewed X-inactivation, where either the maternally- or paternally-inherited X-chromosome is preferentially silenced.<sup>42</sup> In the normal population of females without a family history of X-linked disorders, 5–20% of women have constitutional skewing of X-inactivation.<sup>43</sup>



**Figure 4 (See opposite page).** Longitudinal analysis of *MAOA* DNA methylation in MZ and DZ twins, stratified by sex. (A) Individual changes in average *MAOA* DNA methylation between ages 5 and 10 years. (B) Inter-individual stability correlations for *MAOA* DNA methylation, between ages 5 and 10 years. (C) MZ and DZ twin correlations for average *MAOA* DNA methylation at age 5. (D) MZ and DZ twin correlations for average *MAOA* DNA methylation at age 10. (E) MZ and DZ twin correlations for intraindividual change in *MAOA* DNA methylation from age 5 to age 10 years. MZM, monozygotic male; MZF, monozygotic female; DZM, dizygotic male; DZF, dizygotic female.

Mounting evidence indicates that the degree and direction of X-chromosome skewing is highly variable between individuals, with changes occurring over time<sup>44</sup> and considerable variation reported between female MZ twins.<sup>45</sup>

It is thus not surprising that, given the stochastic nature of monoallelic expression on the X-chromosome and evidence that X-inactivation can be randomly skewed, we see considerable variation regardless of zygosity within female twin-pairs. It is interesting that in males, but not females, *MAOA* DNA methylation appears to be moderately influenced by heritable factors; by definition males inherit their X-chromosome maternally with MZ twin-pairs always sharing the same X-chromosome. This is not the case for DZ male twin-pairs, who could variably inherit either of their mothers' X-chromosomes. Epigenetic marks can appear heritable either if they are directly influenced by the DNA sequence, a phenomenon supported by recent reports of widespread allele-specific DNA methylation across the genome,<sup>45</sup> or more controversially, if epigenetic information can be transmitted across generations through meiosis. The latter is supported by a limited but growing body of evidence.<sup>22,46-48</sup> It is thus plausible that DNA sequence variation or inherited epigenetic marks on the X-chromosome influence DNA methylation levels at this locus in males.

Our findings have a number of implications for understanding the factors influencing epigenetic variation. First, the findings document that there are DNA methylation differences between genetically identical individuals (i.e., MZ twins). This concurs with findings from previous twin studies of DNA methylation<sup>19,20,23-25</sup> and highlights the potential role of variable DNA methylation in explaining non-complete phenotypic concordance between genetically identical individuals. Second, the findings suggest that environmental influences (both shared and non-shared) are important factors accounting for interindividual DNA methylation differences. This supports the notion that DNA methylation may act as a biological index of environmental influence as suggested by both animal<sup>3,49</sup> and human studies.<sup>26</sup> Third, the findings suggest that DNA methylation differences that are predominantly attributable to environmental factors are apparent already in early childhood. This is an important observation—although previous animal studies have shown that environmental factors experienced early in life can lead to long-lasting phenotypic change underlined by alteration in DNA methylation,<sup>50</sup> our study is the first to show that variation in DNA methylation in specific genomic regions during childhood is attributable to non-heritable factors. Third, our findings suggest that there is high variability in DNA methylation profiles across different regions and that change in DNA methylation over time can be influenced by a range of shared and non-shared environmental factors, depending on genomic location. This has implications for epigenetic studies that undertake a genome-wide

approach as it may be difficult to draw conclusions on a global scale. Finally, the findings suggest that cross-sectional studies of DNA methylation may be problematic. Our observation of changes in individual DNA methylation between ages 5 and 10 years adds to the limited body of evidence supporting the notion that epigenetic changes are developmentally dynamic. A previous study used DNA samples from the same individuals to assess changes in DNA methylation over time,<sup>27</sup> although it did not use a genetically-informative twin design. Our findings highlight the importance of standardising sample collection and the care required in interpreting epigenetic findings in cross-sectional designs.

Our study has several strengths. First, to our knowledge, the study is unique in combining the classical twin study with a longitudinal design in order to test hypotheses about heritable and environmental contributions to DNA methylation. Second, by undertaking a loci-specific approach, we were able to perform an extensive investigation of DNA methylation across specific genomic regions. We utilised a highly sensitive and reliable method to detect levels of DNA methylation across the promoter/regulatory regions of three genes previously implicated in neuropsychiatric disorders (*DRD4*, *SERT* and *MAOA*); the Sequenom EpiTYPER system is a highly accurate method for quantifying small differences in DNA methylation,<sup>51</sup> and each of the assays utilised in this study are highly reproducible across duplicate samples.<sup>52</sup> Third, our sample size of 46 MZ twin-pairs and 45 DZ twin-pairs, assessed at two time-points, is larger than other twin studies of DNA methylation to date<sup>19,20</sup> and represents the most thorough twin study of epigenetic variation across specific regions of the genome.

Our study also has limitations. First, our focus on three specific genomic regions means we are unable to extrapolate our findings to other regions of the genome. Our data highlight a high level of heterogeneity across different genomic regions, but future studies will need to employ genome-wide profiling methods to establish the extent of this heterogeneity. Whilst genome-wide profiling of DNA methylation would be an extremely valuable approach, current approaches to perform such analyses are either economically restrictive for the number of samples included in our study or preclude the detailed investigation of numerous CpG sites across any given gene promoter (e.g., the Illumina Infinium 27K methylation assay only assays 1 or 2 CpG sites per gene). Using a highly quantitative loci-specific approach, we were able to perform an extensive investigation of DNA methylation across specific genomic regions, giving a level of detail not achievable using current genome-wide assays. Second, we studied genomic DNA from buccal cells and it is not known whether the findings will generalize to genomic DNA from other tissue sources, such as blood or brain, given the tissue-specific nature of the epigenome.<sup>53-55</sup> Third, it is possible that the DNA samples



taken at different ages were derived from different cellular populations, resulting in epigenetic differences across samples. Fourth, the present study was designed to test hypotheses about heritable, environmental and developmental influences on DNA methylation during the course of childhood development. Our design does not permit us to link epigenetic variation to specific environmental experiences. Finally, although this study is the largest twin study of DNA methylation to date, our sample size is relatively small for a twin study and this has precluded the use of quantitative twin model fitting.

This is the first study to examine longitudinal changes in DNA methylation in both MZ- and DZ-twins across specific genomic regions during the course of childhood development. High levels of MZ twin differences in DNA methylation and changes in DNA methylation over time were observed at the promoter/regulatory regions of the *DRD4*, *SERT* and *MAOA* genes. Most of these dynamic changes in DNA methylation were attributable to environmental influences and were not heritable. These observations highlight the complex nature of epigenetic variation across the genome during the first decade of life, but also emphasize the utility of DNA methylation as a biomarker of environmental influences. Research investigating dynamic changes in the epigenome is in its infancy, but is one of the fastest growing fields in biological and medical research and supported by rapid technological and methodological developments. Understanding the contribution of heritable and environmental factors to epigenetic processes may facilitate the development of better molecular tools that improve the diagnosis, prognosis and treatment of common complex diseases.

## Materials and Methods

**Subjects.** Participants were children enrolled in the Environmental Risk (E-Risk) Longitudinal Twin Study, which has been described in detail elsewhere.<sup>56</sup> In brief, E-Risk investigates how genetic and environmental factors shape children's development. The E-Risk sampling frame comprised two consecutive birth cohorts (1994 and 1995) in the Twins' Early Development Study, a birth register of twins born in England and Wales.<sup>57</sup> The study follows an epidemiological sample of families with young twins who were interviewed in the home when the twins were aged 5, 7, 10 and 12 years. We collected DNA from the children when they were 5 years old and again when they were 10 years old. For the present DNA methylation analysis, we randomly selected 46 Caucasian MZ twin-pairs (23 male pairs, 23 female pairs) and 45 Caucasian DZ twin pairs (23 male pairs, 22 female pairs), totaling 182 children. All DNA was extracted from buccal cells using an established method that yields high molecular weight genomic DNA.<sup>58</sup> All DNA samples were tested for degradation and purity using spectrophotometry and gel electrophoresis; any degraded or impure samples were excluded from analysis.

**Ethics statement.** Ethical approval was granted by the Joint South London and Maudsley and the Institute of Psychiatry Research Ethics Committee.

**DNA methylation analysis.** We performed DNA methylation analysis on three candidate genes: *DRD4*, *SERT* and *MAOA*.

Assays were designed using the online Sequenom EpiDesigner software (see Web Resources). The oligo sequences and the location of the amplicons across which DNA methylation was assessed in this study are given in **Supplementary Table 1** and **Supplementary Figure 1**.

Genomic DNA (375 ng) was treated with sodium bisulfite using the EZ-96 DNA Methylation Kit (Zymo Research, CA, USA) following the manufacturers' standard protocol. Bisulfite-PCR amplification was conducted using Hot Star *Taq* DNA polymerase (Qiagen, UK) and cycling conditions of 45 cycles with an annealing temperature of 56°C for all amplicons. Subsequent to bisulfite-PCR amplification, DNA methylation analysis was conducted using the Sequenom EpiTYPER system (Sequenom Inc., CA, USA) as described previously.<sup>51</sup> The Sequenom EpiTYPER system is a highly reliable and quantitative technology for determining the density of methylated cytosines across specific genomic loci.<sup>51</sup> It utilises base-specific cleavage followed by MALDI-TOF mass spectrometry in which the size ratio of the cleaved products provides quantitative methylation estimates for CpG sites within a target region. We observed a strong correlation ( $\geq 0.95$ ) between experimental duplicates for the three assays utilized in this study, suggesting that our data are highly reliable.<sup>52</sup> Positive controls, including both artificially methylated and artificially unmethylated samples were included in all experimental procedures to ensure unambiguous PCR amplification of bisulfite-treated samples. Finally, to avoid any potential observation bias, all samples were randomized in the experiment and processed blind to sample identification.

**Statistical analysis.** The level of DNA methylation of *DRD4*, *SERT* and *MAOA* was examined using the Sequenom EpiTYPER system that provides a quantitative methylation score (the higher the methylation score, the more methylated is the DNA template). DNA methylation scores are expressed as percentage methylation (% 5mC). Data generated from the EpiTYPER software were treated with stringent quality control analysis where CpG units with low calling rates and individuals with a high number of missing CpG units were removed. Each amplicon was designed to span numerous CpG sites (18 CpG units (30 CpG sites) for *DRD4*, 15 CpG units (27 CpG sites) for *SERT* and 6 CpG units (7 CpG sites) for *MAOA*) across the 5' promoter region of each gene (see **Suppl. Fig. 1** and **Suppl. Table 1** for location of amplicons). Outside of specific transcription-factor binding sites, the proportion of methylated cytosines across a region, rather than at any specific position, is thought to control the transcriptional potential of the gene by attracting methyl-binding proteins and altering chromatin conformation.<sup>37</sup> Because we had no a priori reason to focus our analyses on specific CpGs, we calculated the average DNA methylation level for each genomic region by taking the mean of the multiple CpG sites in the amplicon. To ensure no bias in twin analyses or longitudinal analyses, we only included CpG sites that were reliably quantified in both twins within a pair and in both twins across time. The total number of twin-pairs included in the analyses for each gene can be seen in **Supplementary Table 1**.

Results specific to each candidate gene are presented in three parts. First, to assess stability of individual differences,

we calculated correlations between children's average DNA methylation at age 5 years and their average DNA methylation at age 10 years. Second, to assess heritable and environmental influences on variation in DNA methylation, we calculated correlations between children's DNA methylation, separately within MZ twin pairs and within DZ twin pairs at ages 5 and 10 years, respectively. Third, to assess heritable and environmental influences on change in DNA methylation across childhood, we first calculated intraindividual change scores for each child (i.e., age 5–age 10) and then calculated correlations between change in children's DNA methylation within MZ twin pairs and DZ twin pairs.

## References

1. Jaenisch R, Bird A. Epigenetic regulation of gene expression: how the genome integrates intrinsic and environmental signals. *Nat Genet* 2003; 33:245-54.
2. Henikoff S, Matzke MA. Exploring and explaining epigenetic effects. *Trends Genet* 1997; 13:293-5.
3. Dolinoy DC, Weidman JR, Jirtle RL. Epigenetic gene regulation: linking early developmental environment to adult disease. *Reprod Toxicol* 2007; 23:297-307.
4. Kerkel K, Spadola A, Yuan E, Kosek J, Jiang L, Hod E, et al. Genomic surveys by methylation-sensitive SNP analysis identify sequence-dependent allele-specific DNA methylation. *Nat Genet* 2008; 40:904-8.
5. Schalkwyk LC, Meaburn EL, Smith R, Dempster EL, Jeffries AR, Davies MN, et al. Allelic Skewing of DNA Methylation Is Widespread across the Genome. *Am J Hum Genet* 2010; 86:196-212.
6. Ushijima T, Watanabe N, Okochi E, Kaneda A, Sugimura T, Miyamoto K. Fidelity of the methylation pattern and its variation in the genome. *Genome Res* 2003; 13:868-74.
7. Chow JC, Yen Z, Ziesche SM, Brown CJ. Silencing of the mammalian X chromosome. *Annu Rev Genomics Hum Genet* 2005; 6:69-92.
8. Delaval K, Feil R. Epigenetic regulation of mammalian genomic imprinting. *Curr Opin Genet Dev* 2004; 14:188-95.
9. Jahner D, Stuhlmann H, Stewart CL, Harbers K, Lohler J, Simon I, et al. De novo methylation and expression of retroviral genomes during mouse embryogenesis. *Nature* 1982; 298:623-8.
10. Hatchwell E, Grealley JM. The potential role of epigenomic dysregulation in complex human disease. *Trends Genet* 2007; 23:588-95.
11. Jones PA, Baylin SB. The epigenomics of cancer. *Cell* 2007; 128:683-92.
12. Feinberg AP. Phenotypic plasticity and the epigenetics of human disease. *Nature* 2007; 447:433-40.
13. Mill J, Tang T, Kaminsky Z, Khare T, Yazdanpanah S, Bouchard L, et al. Epigenomic profiling reveals DNA-methylation changes associated with major psychosis. *Am J Hum Genet* 2008; 82:696-711.
14. Mill J, Petronis A. Molecular studies of major depressive disorder: the epigenetic perspective. *Mol Psychiatry* 2007; 12:799-814.
15. Renthal W, Nestler EJ. Epigenetic mechanisms in drug addiction. *Trends Mol Med* 2008; 14:341-50.
16. Mill J, Petronis A. Pre- and peri-natal environmental risks for attention-deficit hyperactivity disorder (ADHD): the potential role of epigenetic processes in mediating susceptibility. *J Child Psychol Psychiatry* 2008; 49:1020-30.
17. Schanen NC. Epigenetics of autism spectrum disorders. *Hum Mol Genet* 2006; 15:138-50.
18. Plomin R, DeFries JC, McClearn GE, McGuffin P. *Behavioral Genetics*. New York: Worth Publishers 2008.

## Acknowledgements

This research received support from UK Medical Research Council grants G9806489, G0100527 and G0601483, US-NIH grants MH077874 and HD061298, and the London University Central Research Fund. Avshalom Caspi is a Royal Society-Wolfson Merit Award holder. Chloe Wong is a PhD student funded by the UK Medical Research Council. The authors declare no conflicts of interest.

## Note

Supplementary materials can be found at: [www.landesbioscience.com/supplement/WongEPI5-6-Sup.pdf](http://www.landesbioscience.com/supplement/WongEPI5-6-Sup.pdf)

19. Kaminsky ZA, Tang T, Wang SC, Ptak C, Oh GH, Wong AH, et al. DNA methylation profiles in monozygotic and dizygotic twins. *Nat Genet* 2009; 41:240-5.
20. Boks MP, Derks EM, Weisenberger DJ, Strengman E, Janson E, Sommer IE, et al. The relationship of DNA methylation with age, gender and genotype in twins and healthy controls. *PLoS One* 2009; 4:6767.
21. Duhl DM, Vrieling H, Miller KA, Wolff GL, Barsh GS. Neomorphic agouti mutations in obese yellow mice. *Nat Genet* 1994; 8:59-65.
22. Morgan HD, Sutherland HG, Martin DI, Whitelaw E. Epigenetic inheritance at the agouti locus in the mouse. *Nat Genet* 1999; 23:314-8.
23. Fraga MF, Ballestar E, Paz MF, Ropero S, Setien F, Ballestar ML, et al. Epigenetic differences arise during the lifetime of monozygotic twins. *Proc Natl Acad Sci USA* 2005; 102:10604-9.
24. Mill J, Dempster E, Caspi A, Williams B, Moffitt T, Craig I. Evidence for monozygotic twin (MZ) discordance in methylation level at two CpG sites in the promoter region of the catechol-O-methyltransferase (COMT) gene. *Am J Med Genet B Neuropsychiatr Genet* 2006; 141:421-5.
25. Petronis A, Gottesman II, Kan P, Kennedy JL, Basile VS, Paterson AD, et al. Monozygotic twins exhibit numerous epigenetic differences: clues to twin discordance? *Schizophr Bull* 2003; 29:169-78.
26. Heijmans BT, Tobi EW, Stein AD, Putter H, Blauw GJ, Susser ES, et al. Persistent epigenetic differences associated with prenatal exposure to famine in humans. *Proc Natl Acad Sci USA* 2008; 105:17046-9.
27. Bjornsson HT, Sigurdsson MI, Fallin MD, Irizarry RA, Aspelund T, Cui H, et al. Intra-individual change over time in DNA methylation with familial clustering. *Jama* 2008; 299:2877-83.
28. Craig IW. The importance of stress and genetic variation in human aggression. *Bioessays* 2007; 29:227-36.
29. Li D, Sham PC, Owen MJ, He L. Meta-analysis shows significant association between dopamine system genes and attention deficit hyperactivity disorder (ADHD). *Hum Mol Genet* 2006; 15:2276-84.
30. Lotrich FE, Pollock BG. Meta-analysis of serotonin transporter polymorphisms and affective disorders. *Psychiatr Genet* 2004; 14:121-9.
31. Thapar A, Langley K, Asherson P, Gill M. Gene-environment interplay in attention-deficit hyperactivity disorder and the importance of a developmental perspective. *Br J Psychiatry* 2007; 190:1-3.
32. Caspi A, Sugden K, Moffitt TE, Taylor A, Craig IW, Harrington H, et al. Influence of life stress on depression: moderation by a polymorphism in the 5-HTT gene. *Science* 2003; 301:386-9.
33. Caspi A, McClay J, Moffitt TE, Mill J, Martin J, Craig IW, et al. Role of genotype in the cycle of violence in maltreated children. *Science* 2002; 297:851-4.
34. Plath K, Mlynarczyk-Evans S, Nusinow DA, Panning B. Xist RNA and the mechanism of X chromosome inactivation. *Annu Rev Genet* 2002; 36:233-78.
35. Caspi A, Hariri AR, Holmes A, Uher R, Moffitt TE. Genetic sensitivity to the environment: The case of the serotonin transporter gene and its implications for studying complex diseases and traits. *Am J Psychiatry* 2010; 167:509-27.
36. Docherty S, Mill J. Epigenetic mechanisms as mediators of environmental risks for psychiatric disorders. *Psychiatry* 2008; 7:500-6.
37. Riggs AD, Xiong Z, Wang L, LeBon JM. Methylation dynamics, epigenetic fidelity and X chromosome structure. *Novartis Found Symp* 1998; 214:214-25.
38. Hendriks RW, Chen ZY, Hinds H, Schuurman RK, Craig IW. An X chromosome inactivation assay based on differential methylation of a CpG island coupled to a VNTR polymorphism at the 5' end of the monoamine oxidase A gene. *Hum Mol Genet* 1992; 1:187-94.
39. Avner P, Heard E. X-chromosome inactivation: counting, choice and initiation. *Nat Rev Genet* 2001; 2:59-67.
40. Carrel L, Willard HF. X-inactivation profile reveals extensive variability in X-linked gene expression in females. *Nature* 2005; 434:400-4.
41. Pinsonneault JK, Papp AC, Sadee W. Allelic mRNA expression of X-linked monoamine oxidase A (MAOA) in human brain: dissection of epigenetic and genetic factors. *Hum Mol Genet* 2006; 15:2636-49.
42. Craig IW, Harper E, Loat CS. The genetic basis for sex differences in human behaviour: role of the sex chromosomes. *Ann Hum Genet* 2004; 68:269-84.
43. Belmont JW. Genetic control of X inactivation and processes leading to X-inactivation skewing. *Am J Hum Genet* 1996; 58:1101-8.
44. Hatakeyama C, Anderson CL, Beever CL, Penaherrera MS, Brown CJ, Robinson WP. The dynamics of X-inactivation skewing as women age. *Clin Genet* 2004; 66:327-32.
45. Rosa A, Picchioni MM, Kalidindi S, Loat CS, Knight J, Touloupoulou T, et al. Differential methylation of the X-chromosome is a possible source of discordance for bipolar disorder female monozygotic twins. *Am J Med Genet B Neuropsychiatr Genet* 2008; 147:459-62.
46. Anway MD, Skinner MK. Epigenetic transgenerational actions of endocrine disruptors. *Endocrinology* 2006; 147:43-9.
47. Pembrey ME, Bygren LO, Kaati G, Edvinsson S, Northstone K, Sjöström M, et al. Sex-specific, male-line transgenerational responses in humans. *Eur J Hum Genet* 2006; 14:159-66.
48. Rakan VK, Chong S, Champ ME, Cuthbert PC, Morgan HD, Luu KV, et al. Transgenerational inheritance of epigenetic states at the murine Axin(Fu) allele occurs after maternal and paternal transmission. *Proc Natl Acad Sci USA* 2003; 100:2538-43.
49. Weaver IC, Cervoni N, Champagne FA, D'Alessio AC, Sharma S, Seckl JR, et al. Epigenetic programming by maternal behavior. *Nat Neurosci* 2004; 7:847-54.

50. Cooney CA, Dave AA, Wolff GL. Maternal methyl supplements in mice affect epigenetic variation and DNA methylation of offspring. *J Nutr* 2002; 132:2393-400.
51. Coolen MW, Statham AL, Gardiner-Garden M, Clark SJ. Genomic profiling of CpG methylation and allelic specificity using quantitative high-throughput mass spectrometry: critical evaluation and improvements. *Nucleic Acids Res* 2007; 35:119.
52. Docherty SJ, Davis OS, Haworth CM, Plomin R, Mill J. Bisulfite-based epityping on pooled genomic DNA provides an accurate estimate of average group DNA methylation. *Epigenetics Chromatin* 2009; 2:3.
53. Illingworth R, Kerr A, Desousa D, Jorgensen H, Ellis P, Stalker J, et al. A novel CpG island set identifies tissue-specific methylation at developmental gene loci. *PLoS Biol* 2008; 6:22.
54. Rakyan VK, Down TA, Thorne NP, Flicek P, Kulesha E, Graf S, et al. An integrated resource for genome-wide identification and analysis of human tissue-specific differentially methylated regions (tDMRs). *Genome Res* 2008; 18:1518-29.
55. Kitamura E, Igarashi J, Morohashi A, Hida N, Oinuma T, Nemoto N, et al. Analysis of tissue-specific differentially methylated regions (TDMs) in humans. *Genomics* 2007; 89:326-37.
56. Moffitt TE. Teen-aged mothers in contemporary Britain. *J Child Psychol Psychiatry* 2002; 43:727-42.
57. Trouton A, Spinath FM, Plomin R. Twins early development study (TEDS): a multivariate, longitudinal genetic investigation of language, cognition and behavior problems in childhood. *Twin Res* 2002; 5:444-8.
58. Freeman B, Smith N, Curtis C, Hockett L, Mill J, Craig IW. DNA from buccal swabs recruited by mail: evaluation of storage effects on long-term stability and suitability for multiplex polymerase chain reaction genotyping. *Behav Genet* 2003; 33:67-72.

©2010 Landes Bioscience.  
Do not distribute.